

INTRODUCING 802.11AC

ROCK, ROUTE AND ROLL!



The new AC standard is here, with up to 866Mbit datarate, 256-QAM modulation and 80MHz channels. 802.11ac opens up new possibilities and speeds never possible before. Our devices support client, point to point and point to multipoint modes, so you can use the 802.11ac technology in all situations. Build a new high speed link, or make a high speed home access point for your 802.11ac enabled laptops — it's all possible!

SXT AC

The SXT is an outdoor unit with a built in antenna. One of the models has a narrow beamwidth antenna for point to point links and the other has a 90 degree antenna for sector installations.

NETMETAL

The NetMETAL is a rugged outdoor wireless device in a strong aluminium enclosure and with a super high power wireless radio.

R11E AC

The R11 ac gives you the ability to upgrade an existing device to the new 802.11ac standard. Supported by our RB900 and RB800 series devices, you can simply add 802.11ac without replacing the unit. It is also supported in x86 devices.

HomeVPN

Starting from RouterOS v6.16 you can easily enable a VPN server for your HomeAP device in the QuickSet page in Webfig. Access your local network or use your router as a secure gateway for Internet access. PPTP or IPsec will be used, depending on the client config. Some of the benefits are outlined below.

Bypass Internet Censorship

HomeVPN lets you go where you want to go, Unblock YouTube, unblock Facebook, unblock Twitter

Secure browsing

Honey-pot open APs can not snoop your passwords and identity when using HomeVPN

Freedom to travel

Now you can access of the region restricted media when traveling abroad (music, movie, TV, sports websites)

Private Surfing

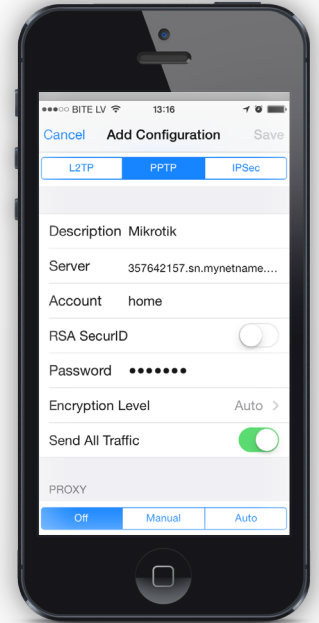
Protect your constitutional rights to privacy, don't get tracked and logged by your workplace or hotspots

Wi-Fi security

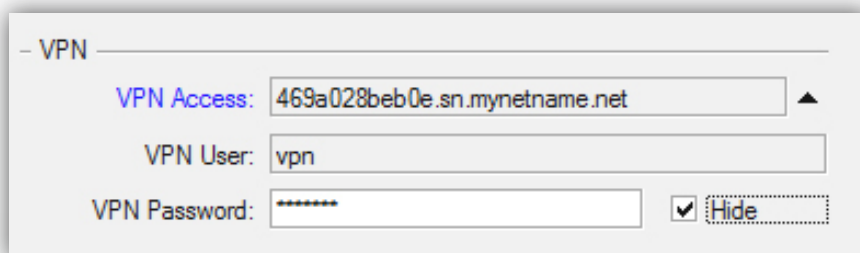
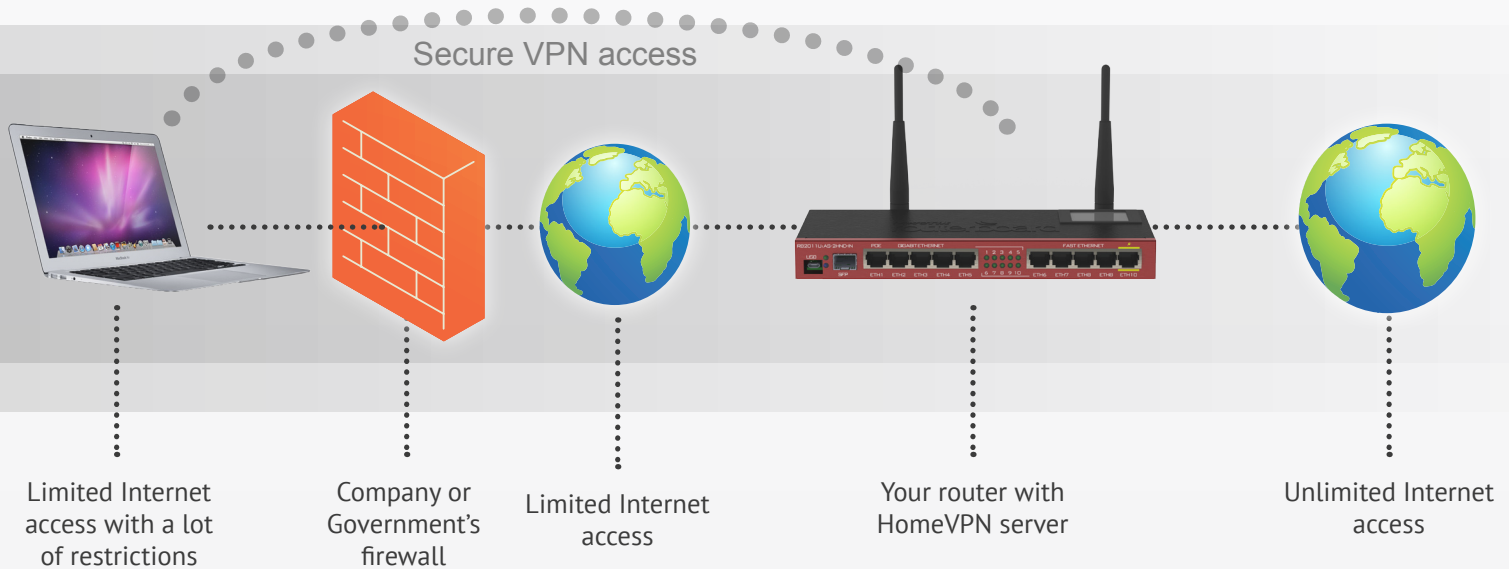
HomeVPN encrypts all traffic that goes over wireless even if the AP is not set to do encryption

Malware protection

With HomeVPN, no man-in-the-middle-attack will take control of your device



Mobile device configuration example



Works with



The new QuickSet VPN menu is truly simple - just copy the "VPN access" address and paste into your computer or phone VPN settings

DESIGNS.MIKROTIK.COM

We have created a new webpage where you can download files for making your own T-shirts with MikroTik logo, slogans, product images and more. We will be updating the site with new designs all the time.

This allows to choose your own shirt material and color, without big shipping charges – simply download the artwork and order a shirt locally, in any screen printing shop.

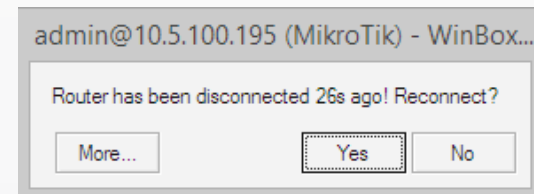
In another section you will be able to download MikroTik themed wallpapers for your computer screen.

And for all other purposes, a third section is devoted to the MikroTik and RouterBOARD logo. This will allow you to create your own flyers, brochures, pens, advertising materials and more.



Winbox 3

We have released a new Winbox version with many long requested features. Currently the new Winbox is still in Beta, but it works very well, and can be used alongside the old Winbox, without disturbing the operation of the router, or the old Winbox. You can download it on the [mikrotik.com download page](#)



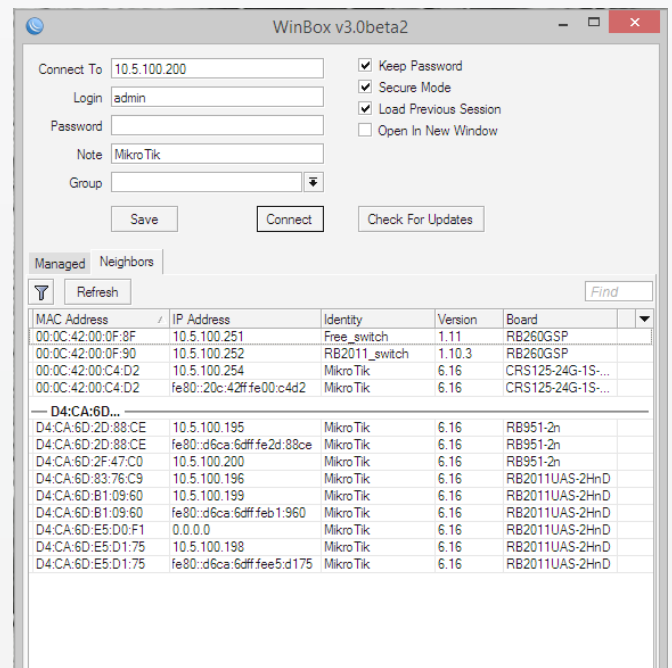
Reconnect is now possible

Some of the highlights in Winbox 3:

- Group saved routers and keep big lists of them
- Sort by IP address, MAC, version etc.
- Filter and search in Saved or Neighbors
- Ability to keep Loader open when connecting
- Winbox can now self-upgrade
- If connection is lost, it will offer to reconnect later
- Log can be sorted, and now has columns

#	Time	Buffer	Topics	Message
36	Jan/03/1970 02:00:40	memory	l2tp, ppp, info	l2tp-out 1: initializing...
32	Jan/03/1970 02:00:06	memory	l2tp, ppp, info	l2tp-out 1: initializing...
28	Jan/03/1970 01:59:35	memory	l2tp, ppp, info	l2tp-out 1: initializing...
24	Jan/03/1970 01:59:08	memory	l2tp, ppp, info	l2tp-out 1: initializing...
20	Jan/03/1970 01:58:43	memory	l2tp, ppp, info	l2tp-out 1: initializing...
12	Jan/03/1970 01:58:18	memory	l2tp, ppp, info	l2tp-out 1: initializing...
16	Jan/03/1970 01:58:18	memory	l2tp, ppp, info	l2tp-out 1: initializing...
8	Jan/03/1970 01:57:54	memory	l2tp, ppp, info	l2tp-out 1: initializing...
56	Jan/03/1970 02:03:20	memory	l2tp, ppp, info	l2tp-out 1: disconnected
52	Jan/03/1970 02:02:46	memory	l2tp, ppp, info	l2tp-out 1: disconnected
48	Jan/03/1970 02:02:12	memory	l2tp, ppp, info	l2tp-out 1: disconnected
44	Jan/03/1970 02:01:38	memory	l2tp, ppp, info	l2tp-out 1: disconnected

Sortable Log



Main loader window