

The Mikrotik logo features the word "Mikrotik" in a stylized, italicized font. The "i" in "Mikro" has a dot, and the "i" in "tik" has a dot. Above the "i" in "Mikro" are two curved lines, resembling a stylized "M" or a signal icon. The "T" in "tik" is bold and has a horizontal bar above it.

*MikroTik*

MUM Australia  
2018



What do we do?

We create networks

# MikroTik

- Established 1996
- RouterOS created in 1997
- RouterBOARD created in 2002
- First MUM event in Prague 2006
- MUM in Indonesia had over 3100 people
- 25 events in 2017



LATVIA

Iceland

Finland

Sweden

Russia

Norway

Estonia

Denmark

Ireland

United Kingdom

Lithuania

Belarus

Netherlands

Poland

Belgium

Germany

Ukraine

Luxembourg

Czech Republic

Slovakia

France

Switzerland

Liecht

Austria

Hungary

Moldova

Georgia

Switzerland

Austria

Hungary

Romania

Armenia

Monaco

San Marino

Bosnia and Herzegovina

Serbia

Bulgaria

Portugal

Andorra

Spain

Italy

Montenegro

Macedonia

Vatican City

Albania

Greece

Turkey

Syria



Искренно, курсомъ фирмъ даюсъ наъ реунараб. Рахстет дрисхунис.  
Luceirot. Frisia





Our products include



RouterOS

built and advanced for more than 20 years

RouterBOARD

Wireless outdoor, indoor, Ethernet routers

CRS

Switches with RouterOS

CSS

Switches with SwOS

no matter where you are

# More than 175 MUM events around the world



**STAFF**

Look for MikroTik staff in the red shirts

Karlis (sales)

Pauls (support)

Janis (support and training)

**Today**

**09:00**

**Presentations**

**12:00**

**Lunch with tickets**

**13:30**

**Presentations**

# WiFi

**SSID: MUM 2018**

**Password: MikroTik**

# MUM Live

[www.youtube.com/mikrotik](http://www.youtube.com/mikrotik)

# Special thanks

Duxtel

*take control...*



**duxtel**

[www.duxtel.com.au](http://www.duxtel.com.au)



**Some of our latest products**

1Gbit  
over wireless

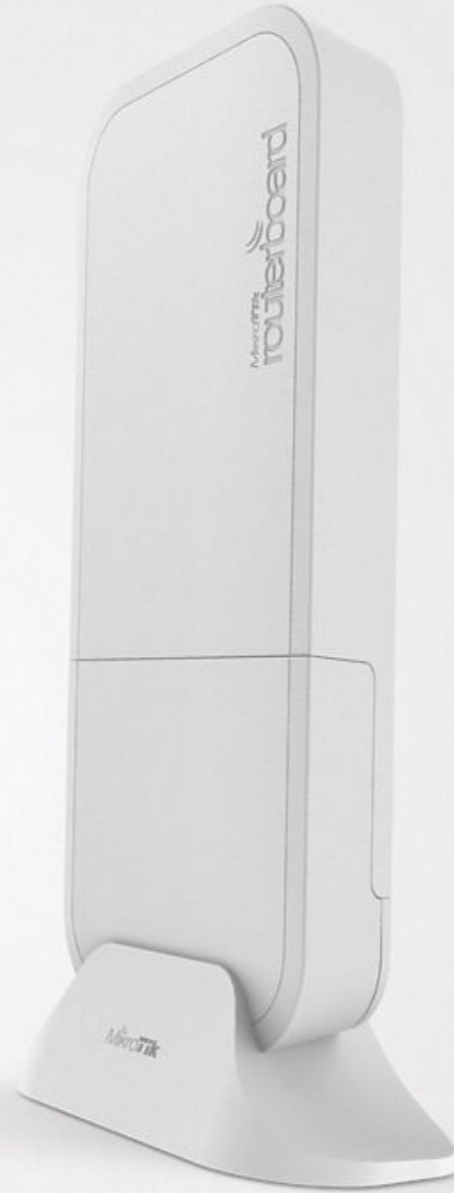
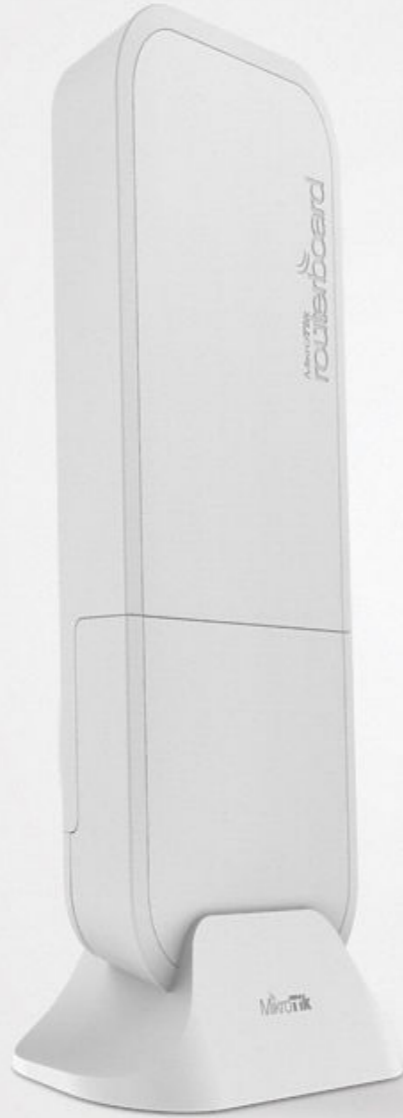
100m+  
range

60GHz  
radio

Gigabit  
Ethernet

Paired  
Secure Link  
preconfigured

Powered by  
AF/AT/Passive  
PoE, DC jack

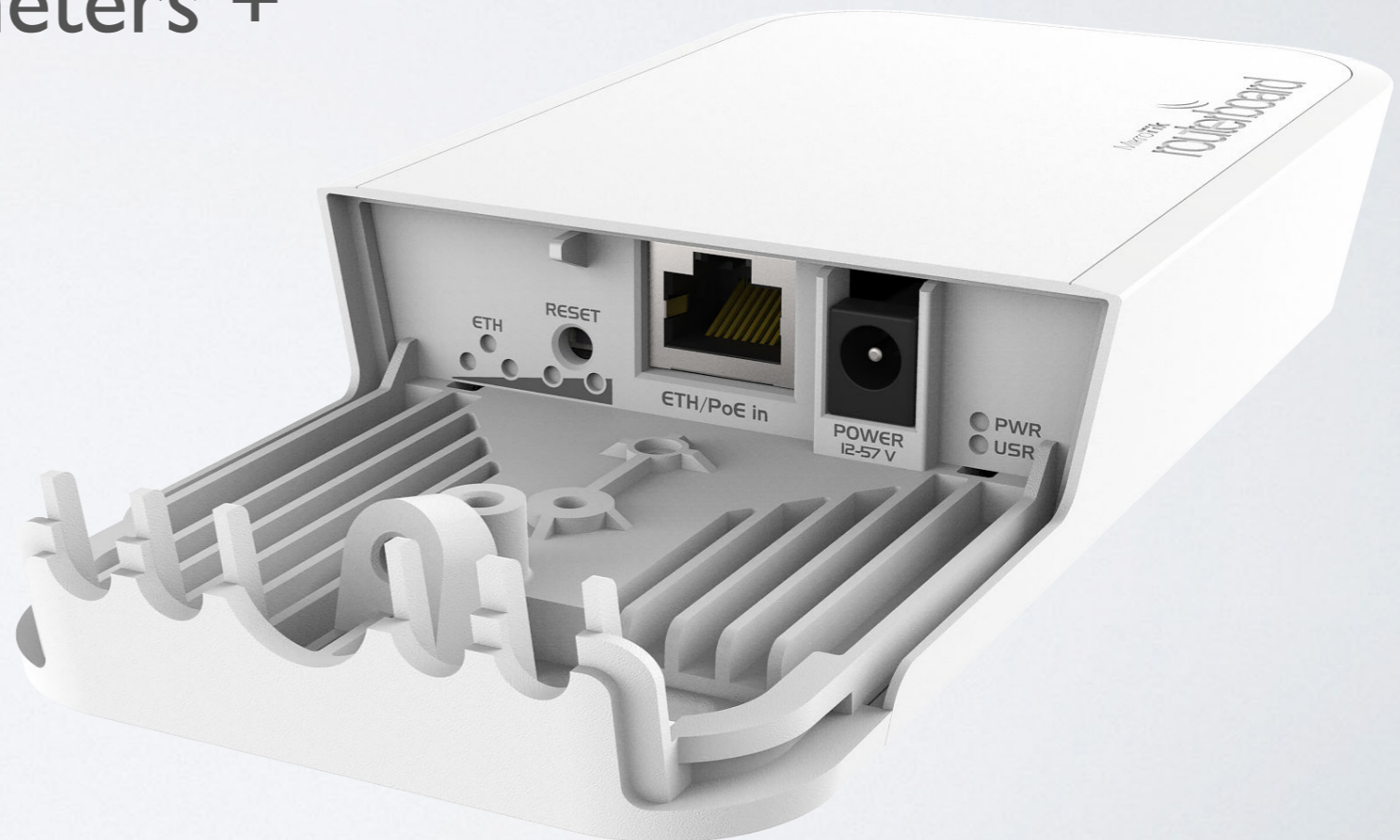


MikroTik

Wireless Wire

# Wireless Wire

- 1 Gbps full duplex without wires
- Now for distance 200 meters +
- 60 GHz beam-forming
- Paired Secure Link  
Preconfigured
- \$198 kit



# WIRELESS WIRE DISH

Two LHG60G devices for long range 1 Gbit

# LHG 60G

- 1 Gbit full duplex (wire speed)
- Works in 60 GHz spectrum
- Familiar LHG design
- Quad-core ARM CPU
- Low cost and low weight
- Targeted for longer 1500 meters and more!
- Kit price \$298



# LtAP mini

- 2.4 GHz AP in a rugged case
- miniPCIe for LTE
- Built-in GPS
- Optional external antennas for GPS and LTE
- Serial port
- Perfect for outdoor and mobile applications



# Available now

- 129\$ with LTE module
- 89\$ without module



# hAP ac<sup>2</sup>

- Gigabit ports
- Dual chain, dual band
- Wall mount or stand
- Same small size as Lite model

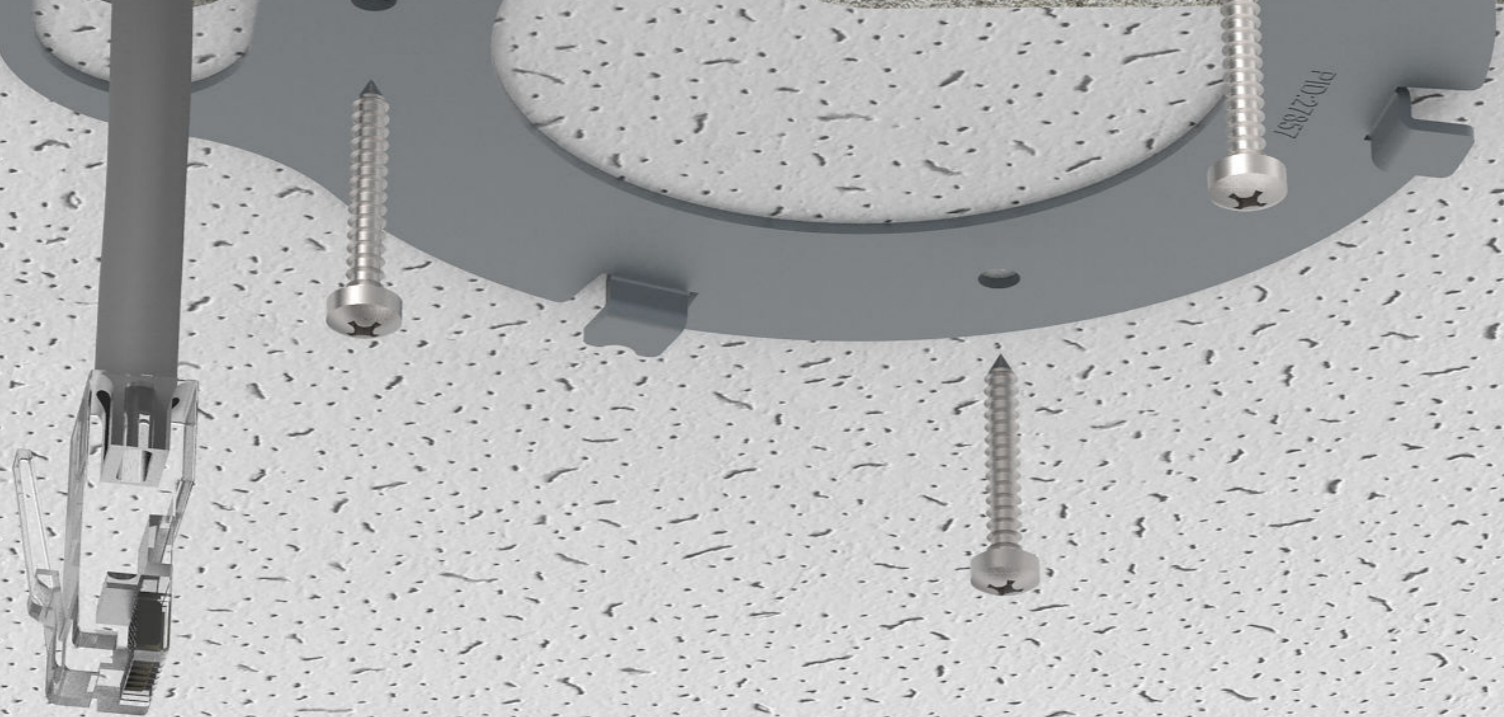




# cAP ac

- Dual band, dual chain
- Gigabit port for 802.11ac speeds
- Two Ethernet ports
- PoE out
- Two cases included

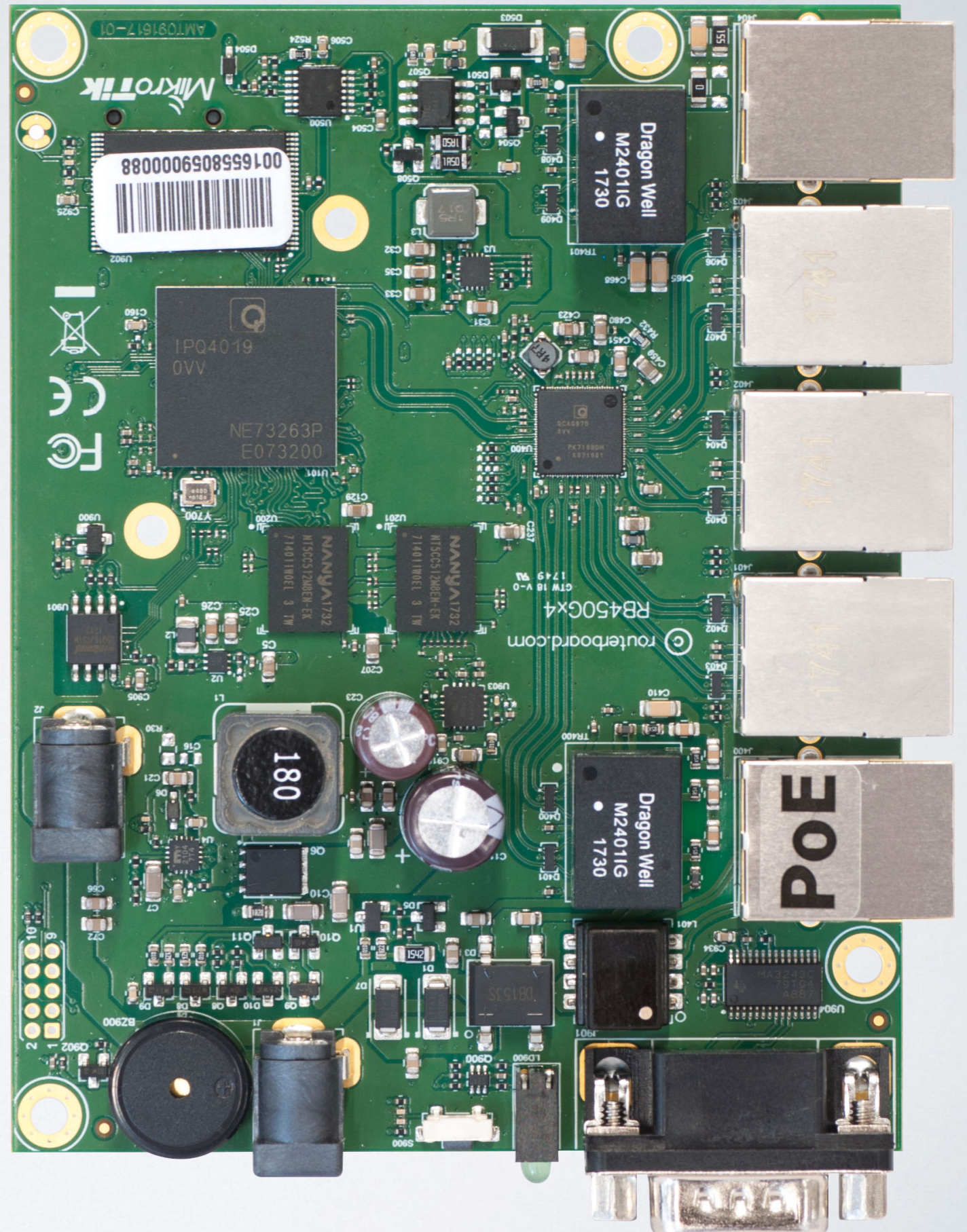






# 450Gx4

- Quad core 716MHz
- 1GB of RAM
- IPSec encryption
- PoE out on Ether5
- microSD
- 10V - 57V input by two power jacks
- \$99



# heX S

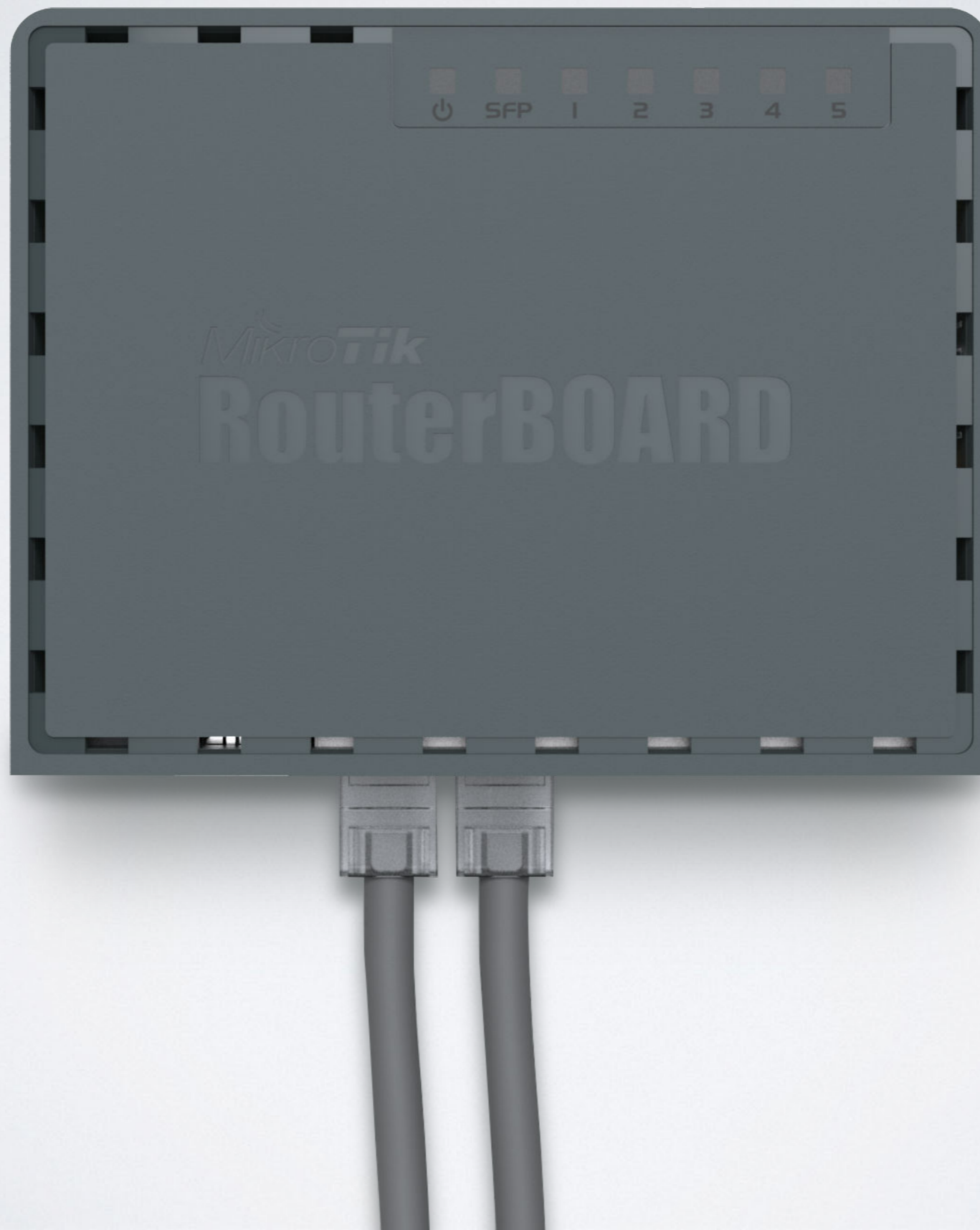
- Dual-core 880 MHz
- 256MB of RAM
- Full size USB
- PoE out on Ether5
- 1.25Gbps SFP
- 10V - 57V input and PoE
- \$69



# heX S



# heX S



# SXTsq Lite 2

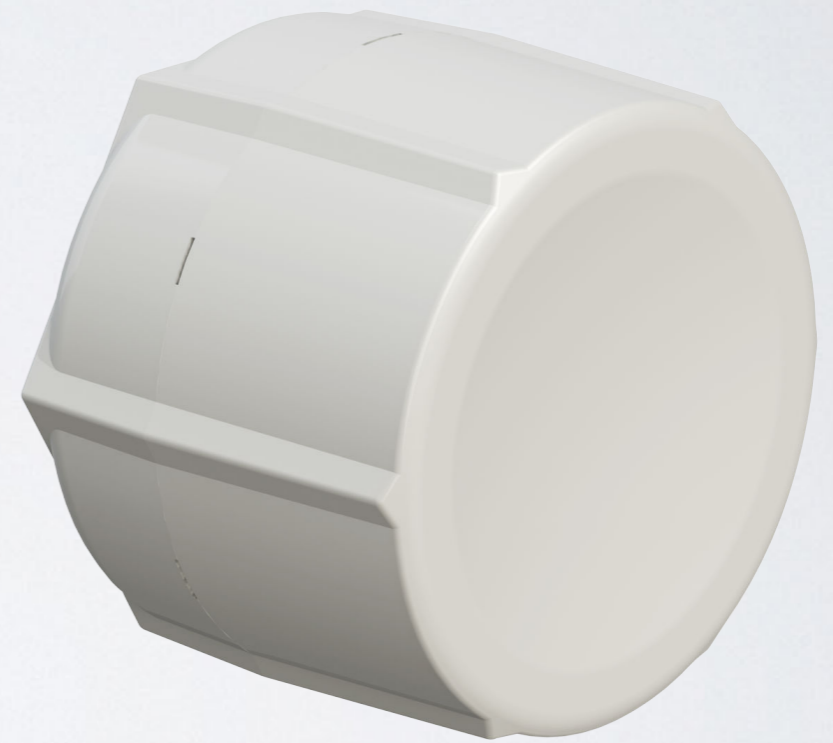
- 2GHz CPE
- Slim design
- Low price





# SXT LTE kit

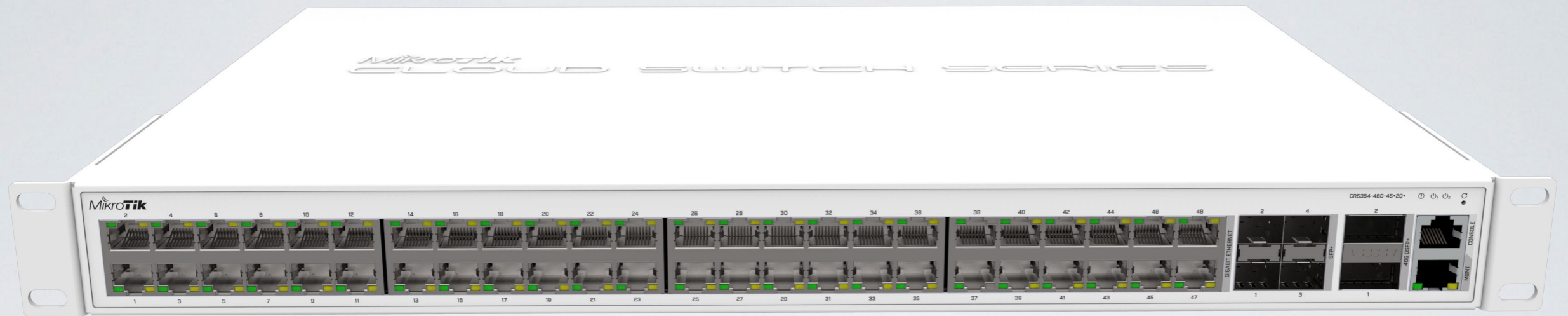
- Dual SIM
- LTE card built in
- 2x Ethernet
- PoE output on #2
- International LTE bands  
1,2,3,7,8,20,38 and 40



# LDF 2

- 2GHz CPE
- Mounts in regular satellite dish
- Ultra long range





# CRS354-48G-4S+2Q+

- 48x Gigabit ports
- 4x SFP+ for 10Gbit connections
- 2x QSFP ports for 40Gbit connections

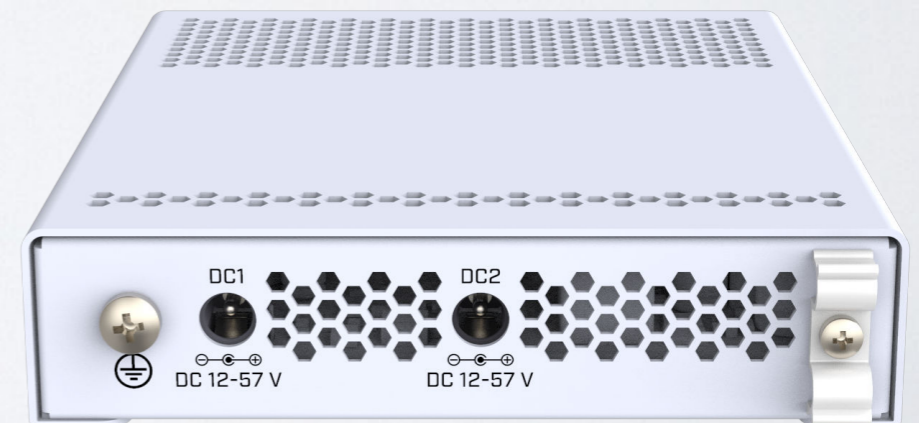


# CRS354-48P-4S+2Q+

- 48x Gigabit ports with PoE out
- 4x SFP+ for 10Gbit connections
- 2x QSFP+ ports for 40Gbit connections

# CRS305-1G-4S+IN

- 4x SFP+ ports
- 1x Gigabit Ethernet
- Metallic enclosure
- Dual DC jacks



# mANTBox2 12s

- 2 GHz sector antenna
- 12 dBi
- RouterBOARD built in



# mANT 5o LTE

- Special 5 dBi LTE antenna
- Omnidirectional design
- Use with wAP, LtAP
- High speed internet in remote locations

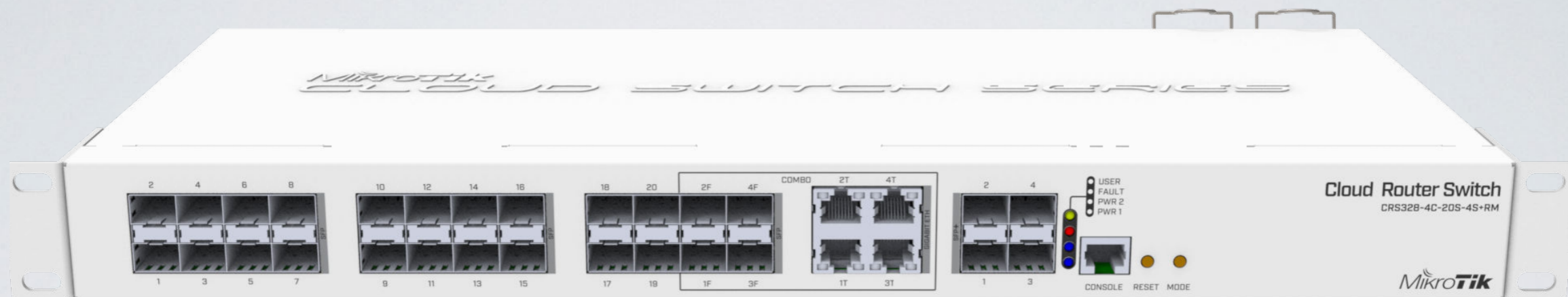


# CRS309-1G-8S+PC

- 8x SFP+ ports
- 1x Gigabit Ethernet
- Silent case

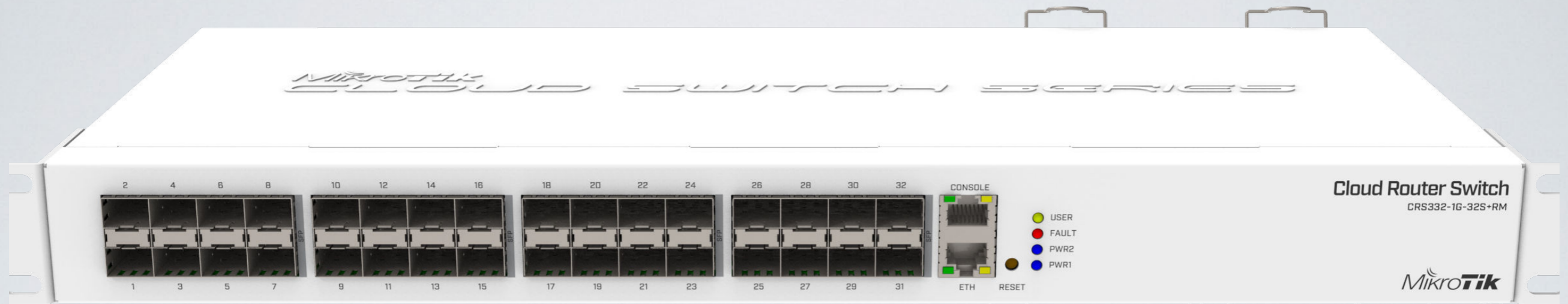






# CRS328-4C-20S-4S+RM

- 20x SFP ports
- 4x ETH/SFP combo ports
- 4x SFP+ ports
- Dual PSU



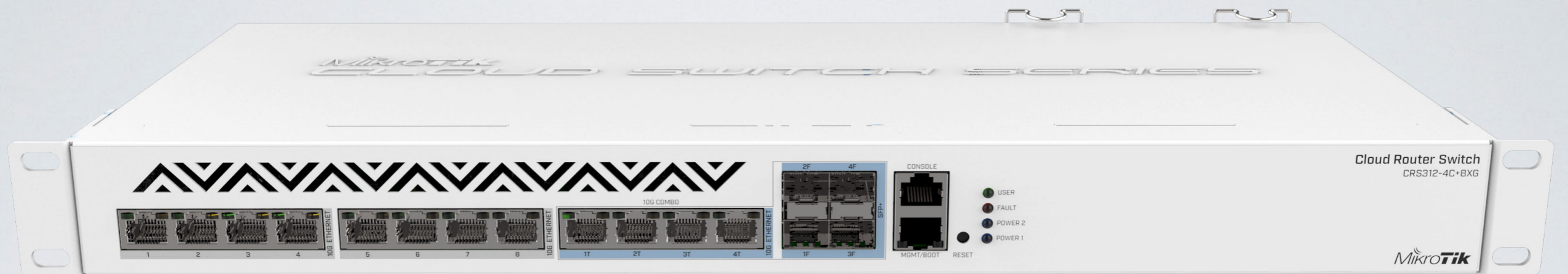
# CRS332-32S+RM

- 32x SFP+ ports
- RJ45 console and ETH management
- Dual PSU

# PWR-Line AP

- Small AP directly plugs into socket
- Makes 100Mbit links with others like it
- Build WiFi network without special cabling
- Auto pairs with new devices





# CRS312-4C+8XG

- 8x 10G Ethernet ports
- 4x 10G Ethernet / 10G SFP+ combo ports
- Console and management ports
- Dual PSU

# Need help?

- Ask a local distributor
- Hire MikroTik consultant
- Read the manual [wiki.mikrotik.com](http://wiki.mikrotik.com)
- Email [support@mikrotik.com](mailto:support@mikrotik.com)
- Attend a training class or join and Academy class in a University

# After the MUM

- All presentations - [mum.mikrotik.com](http://mum.mikrotik.com)
- Videos - [youtube.com/mikrotik](http://youtube.com/mikrotik)
- License for paid and voucher registrations will be sent by an e-mail

The logo for MikroTik, featuring the word "MikroTik" in a stylized font. The "Mikro" part is in a lowercase, italicized sans-serif font, and the "Tik" part is in a bold, uppercase, italicized sans-serif font. Above the "i" in "Mikro" are three curved lines. The entire logo is reflected on a light gray surface below it.

*MikroTik*