

Wireless consulting with help of WinBox and Radio mobile

Leo De Geer

Satellithuset i Limmared AB

Sweden

WinBox

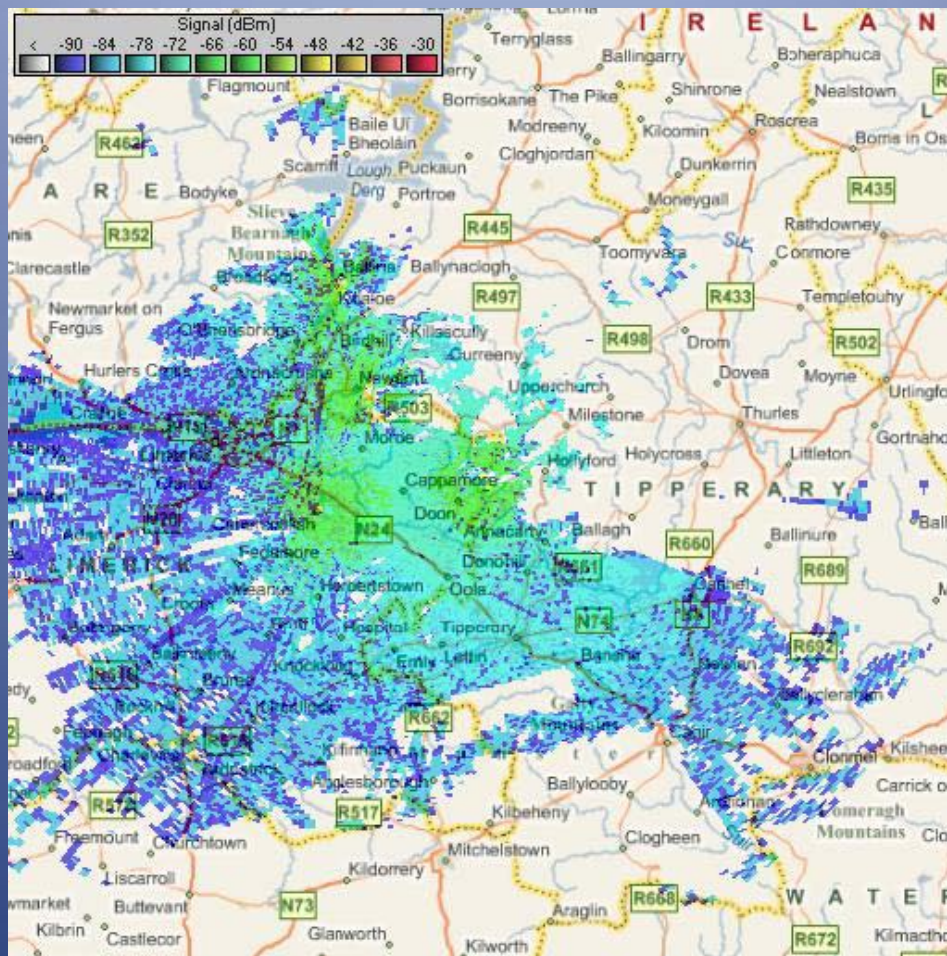
- MAC Connections to RouterOS need MTU 1500 for your computer to work correctly. Beware of Cisco VPN client software! They can change your computer MTU's to 1300
- IP Connections
- Realtime overview of the running system
- Low on bandwidth approx 20kbit
- Don't forget secure mode

Radio Mobile

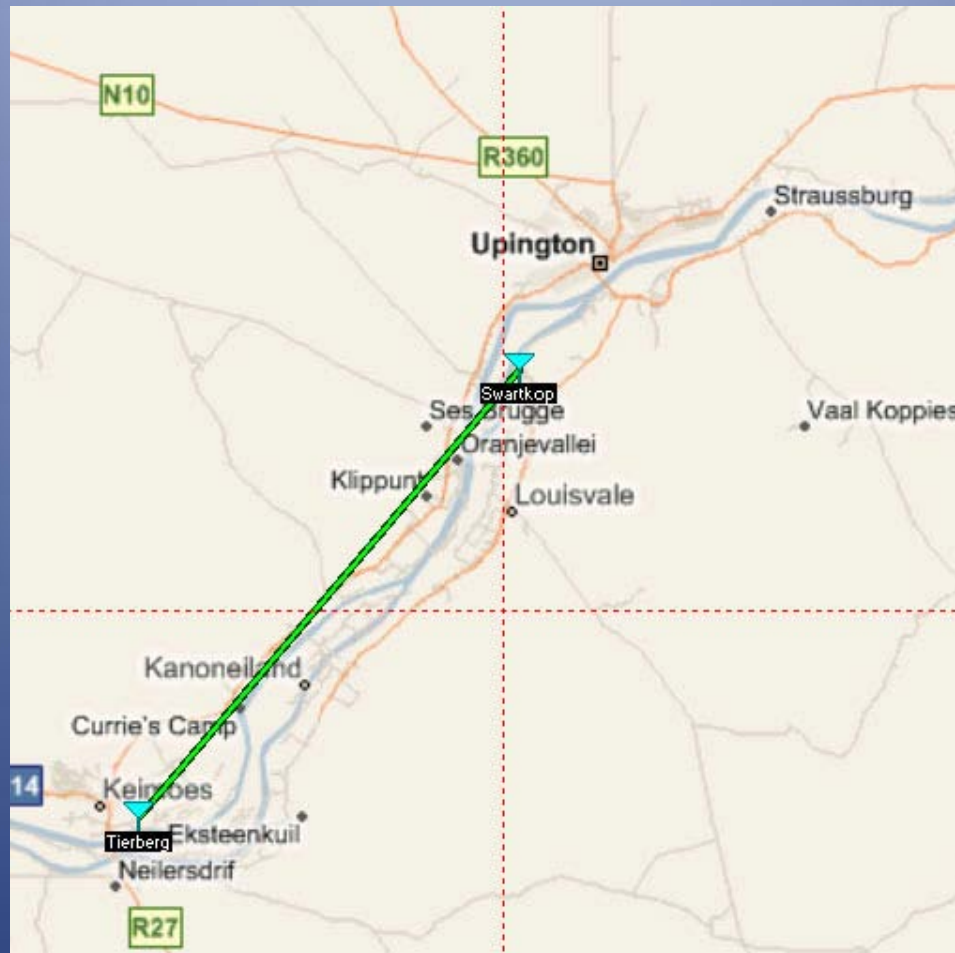
- Can give you accurate predictions World Wide
- Predict the possibility of a P2P link.
- Make coverage maps of your Network
- It is FAST
- It is Free to use
- Download

<http://www.cplus.org/rmw/english1.html>

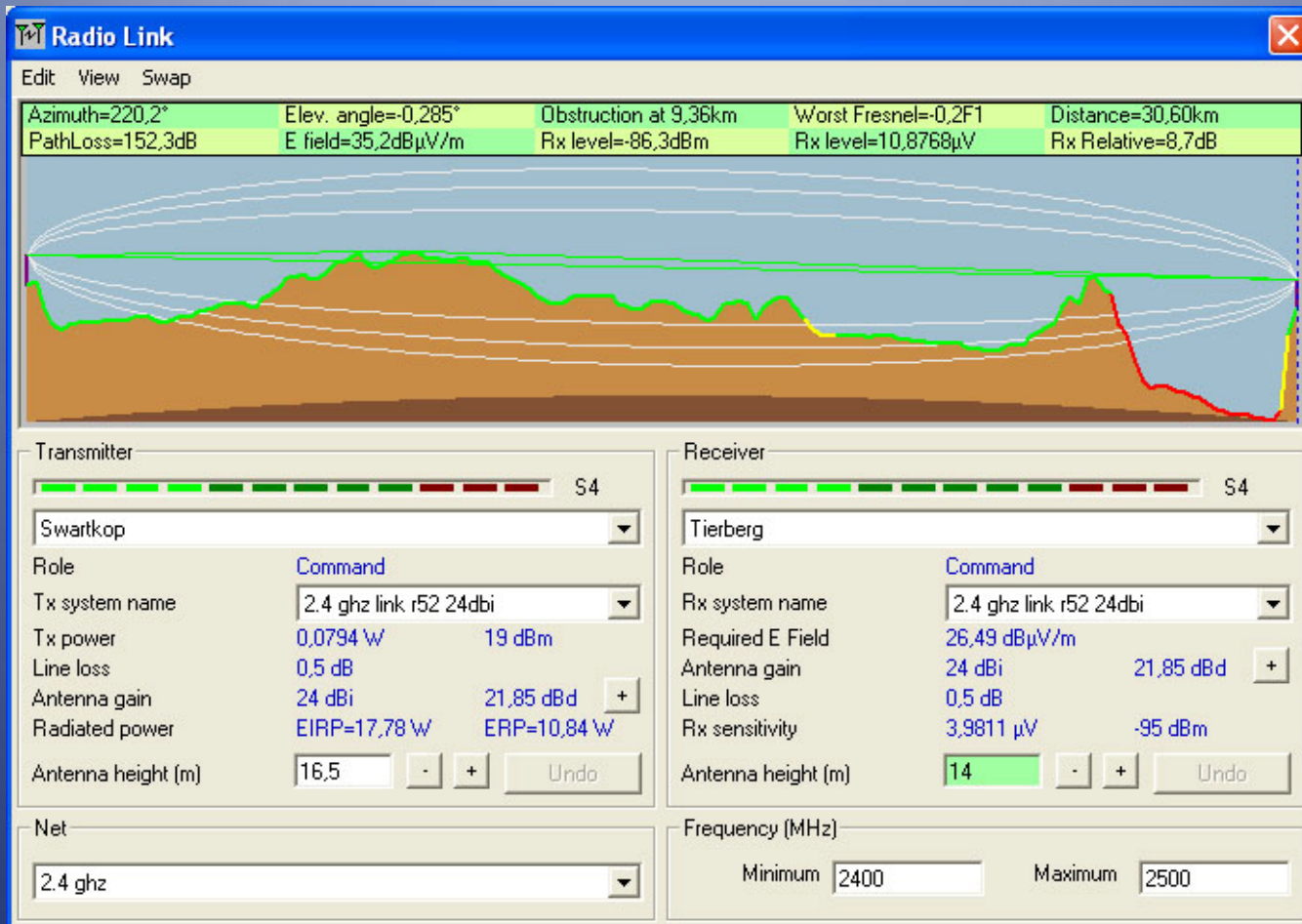
Access Coverage Prediction Map Republic of Ireland



P2P Link in South Africa



P2P Link Problem in South Africa



Installation

- Create a program directory to place the contents of the following files.

Example:

"C:\Radio_Mobile"

- Installation of [rmwcore.zip](#) is required for all languages!
- Installation of [rmwupdate.zip](#) is required for all languages!

Installation

- Create a data directory structure.

Example:

"C:\Radio_Mobile\Geodata"

"C:\Radio_Mobile\Geodata\srtm1"

"C:\Radio_Mobile\Geodata\srtm3"

"C:\Radio_Mobile\Geodata\GTOPO30"

"C:\Radio_Mobile\Geodata\Terraserver"

"C:\Radio_Mobile\Geodata\Landsat"

"C:\Radio_Mobile\Geodata\OpenStreetMap"

Installation

- Insure that no other instances of Rmwdlx32.dll exist on your system. If you want to put the program in more than one location, you should put Rmwdlx32.dll (and other dlls) in c:\Windows\system32.
- To get UTM coordinates in MGRS format instead of amateur radio QRA then extract [File utm.zip](#) into the radio mobile program directory.
- To get a World Map with SRTM continent definition then just extract [File wmap.zip](#) into the radio mobile program directory.
- By reading and editing the file Map_Link.txt with Notepad, Radio Mobile can access various map layers for personal use only. Commercial Licences must be purchased for other use !

Radio Mobile In Action !!

Questions and Answers

Leo De Geer

MikroTik Certified Consultant/Trainer

support@mikrotik.se

+46 325 660 650