



User Meeting

Yogyakarta, Indonesia

October 2015

# More than 100 MUM events



# MikroTik

- MikroTik is located in Latvia (Europe)
- More than 160 employees
- Established 1996
- RouterOS created in 1997
- RouterBOARD created in 2002
- First MUM in Prague 2006
- The biggest MUM in 2014, Indonesia - 2000 people **(or 2015???)**



Iceland

Ireland

United Kingdom

Portugal

Spain

Andorra

France

Luxembourg

Belgium

Netherlands

Germany

Switzerland

Liecht

Austria

Czech Republic

Poland

Slovakia

Hungary

Romania

Moldova

Ukraine

Sweden

Norway

Finland

Russia

Denmark

Estonia

Lithuania

Belarus

Poland

Ukraine

Switzerland

Liecht

Austria

Hungary

Czech Republic

Slovakia

Croatia

Romania

Slovenia

Bosnia and Herzegovina

Serbia

Montenegro

Bulgaria

Italy

San Marino

Vatican City

Albania

Macedonia

Greece

Turkey

Georgia

Armenia

Azerbaijan

Syria

Iraq

Kazakhstan

# MikroTik at the MUM

- Arnis Riekstins (CTO)
- Edmunds Aperans (Sales, Training, Academy)
- Martins Strods (Support, Hardware, Scripting, Tunnels)
- Janis Megis (Support, Training, Packet Flow, Fast Path, Queues, Firewall)

# Why us?

- **19 years** experience of developing networking software and hardware
- **Millions** of RouterOS powered devices currently routing the world
- Over **22'000** RouterOS trained and certified network engineers around the world

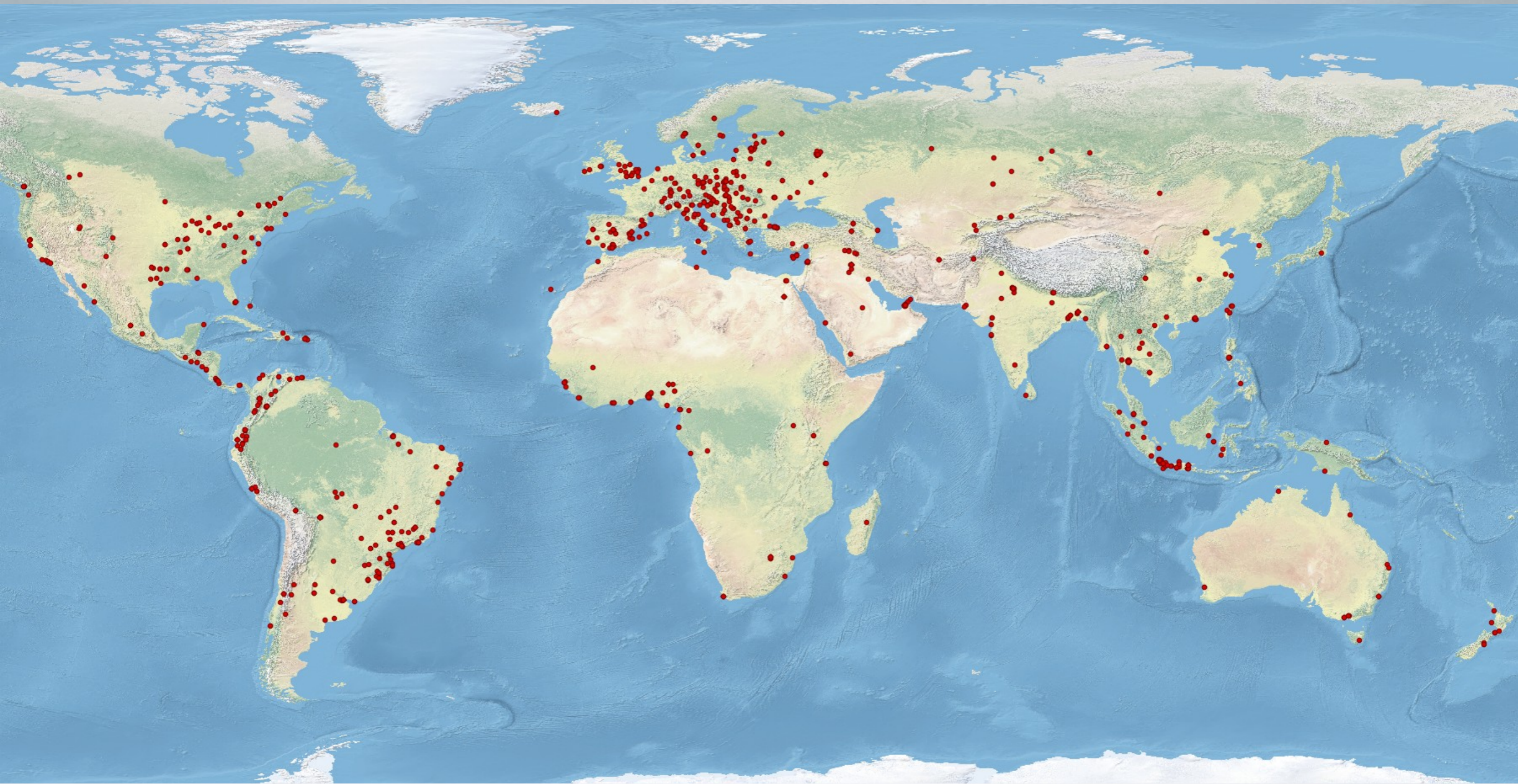
# Hardware and Software

- More than **200** different hardware products available now
- Our products cover all possible networking needs
- Almost identical operating system across all products – **MikroTik RouterOS**
- Learn how to use one MikroTik product and you will know how to ~~rule~~ use them all

# Learn MikroTik

- Thousands of pages of documentation, examples, application notes and guides
- Helpful and active **user forum**
- Worldwide network of certified consultants, trainers and training centers
- More than **1600 training classes** last year
- More than **250 MikroTik Academies**  
**(~100 here in Indonesia)**





# MikroTik Academy

Who can apply?

- Universities
- Technical schools
- Colleges
- Vocational schools
- Other institutions which offer semester based courses

# MikroTik Academy

## Requirements:

- Motivation
- Space and all the equipment needed for the labs
- Appropriate Internet access
- **MikoTik Academy Trainer**
- Approved training materials

# Academy Trainer

## Requirements:

- Must be a lecturer at the educational institution
- MTCNA certificate (score at least 75%)
- Any MikroTik engineer level certificate (score at least 75%)
- Appropriate teaching skills

# After the MUM

- Presentation slides on [mum.mikrotik.com](http://mum.mikrotik.com)
- Videos - [youtube.com/mikrotik](http://youtube.com/mikrotik)
- License will be emailed

Special thanks

**CITRAWEB**

NUSA**INFOMEDIA**

[www.mikrotik.id](http://www.mikrotik.id)

The logo features a stylized red and grey swoosh above the text 'citranet'. The 'c', 'i', 't', 'r', 'a' are in black, and 'n', 'e', 't' are in red.

**citranet**

RECENTLY INTRODUCED

# hAP lite

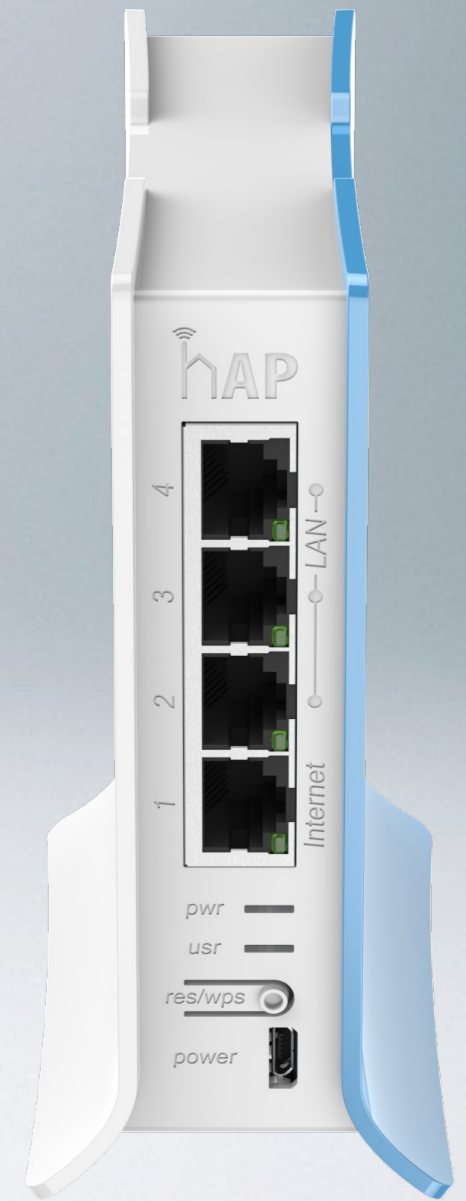


\$21.95



# hAP lite

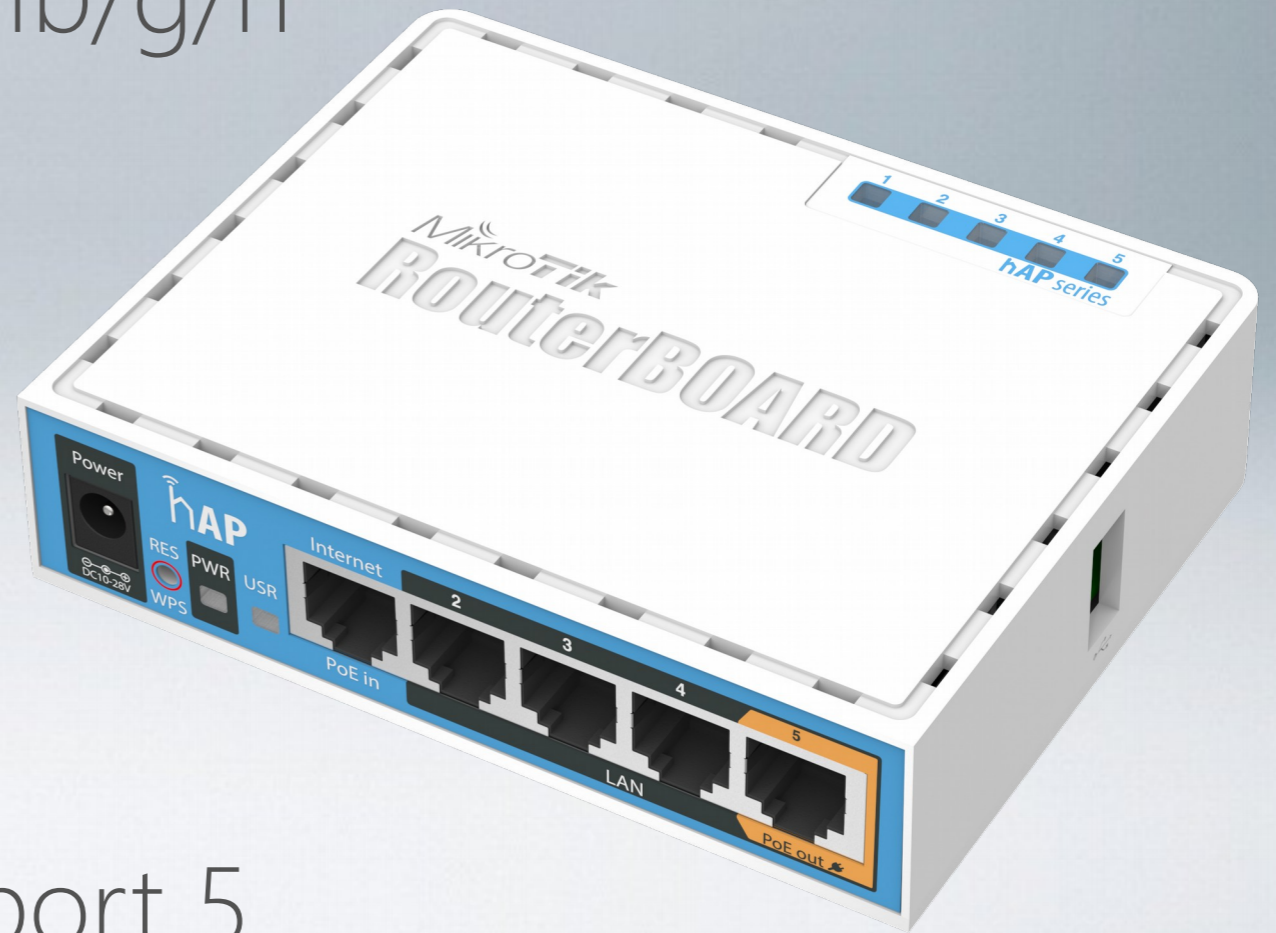
- Very affordable **h**ome **A**ccess **P**oint
- Full RouterOS functionality
- 2.4GHz dual chain 802.11b/g/n
- 4 Fast Ethernet ports
- 650MHz CPU
- Powered by 5V (microUSB)



\$21.95

# hAP

- Improved popular RB951-2n
- 2.4GHz dual chain 802.11b/g/n
- 5 Fast Ethernet ports
- 650Mhz CPU
- 300MHz DDR2 RAM
- USB port
- PoE-in and PoE-out on port 5



\$45

# hEX lite

- Very affordable **h**ome **E**thernet **EX**change router
- 850MHz CPU (o/c up to 1GHz)
- 300MHz DDR2 RAM
- Improved popular RB750
- 5 Fast Ethernet ports



\$39.95

# hEX

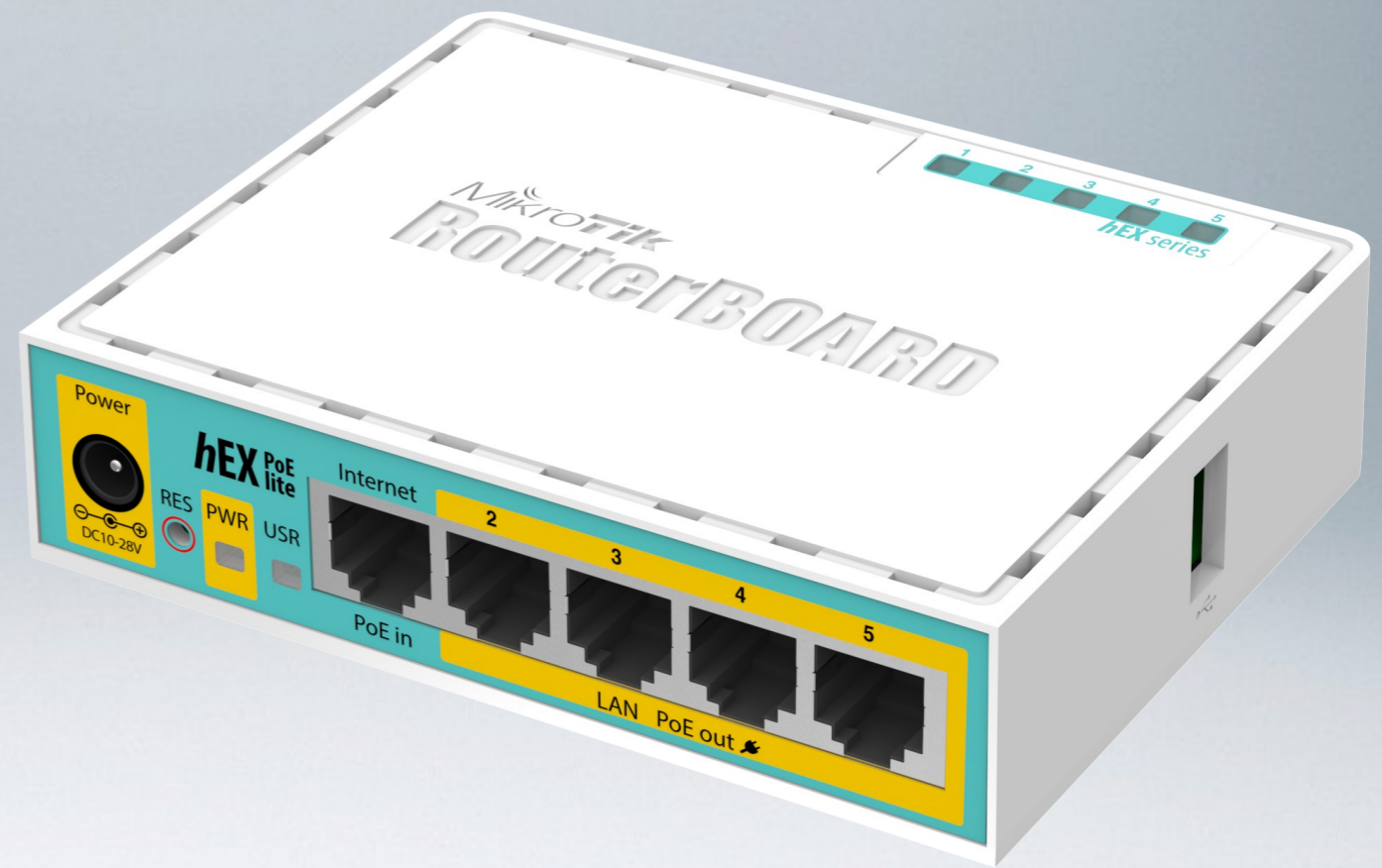
- Improved popular RB750GL
- 720MHz CPU
- 300MHz DDR2 RAM
- 5 Gigabit Ethernet ports



\$59.95

# hEX PoE lite

- Improved popular RB750UP
- 5 Fast Ethernet ports
- 650Mhz CPU
- 300Mhz DDR2 RAM
- USB port
- PoE-in
- 4 PoE-out ports with max PoE-out current –  
1A per port, or 2A total



\$59.95

# PowerBox

- RB750P Series in outdoor box
- 5 Fast Ethernet ports
- 4 PoE-out ports
- 650Mhz CPU
- 300MHz DDR2 RAM
- Weatherproof
- Pole mountable



\$69

NEW

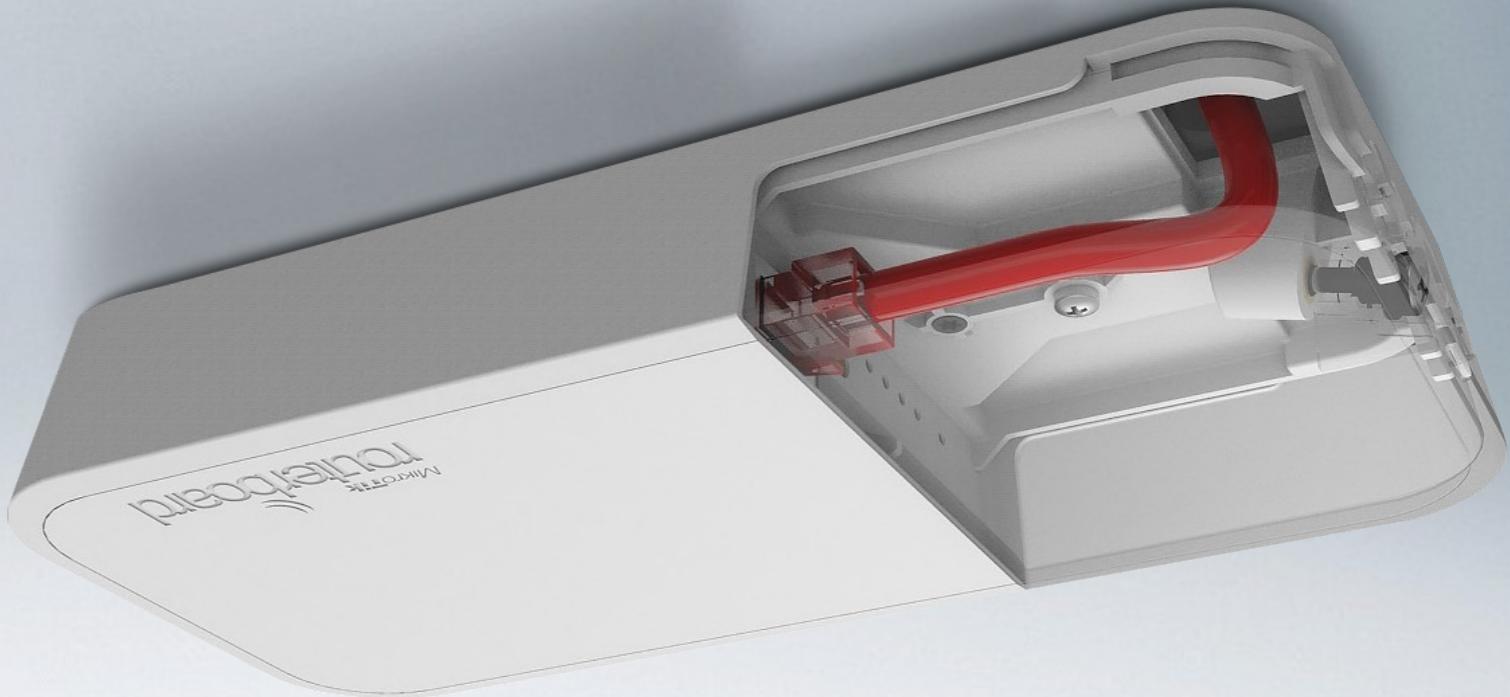
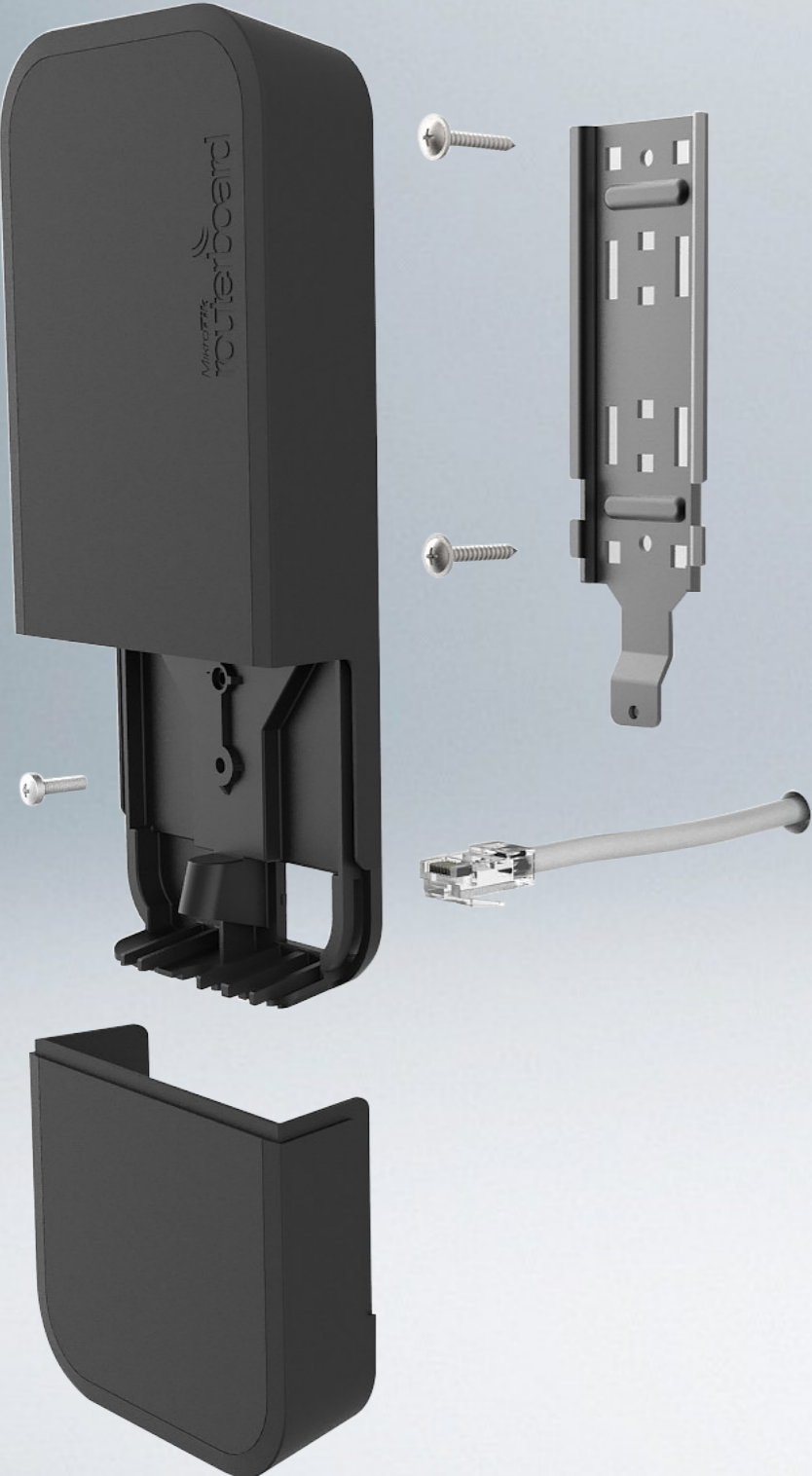
# wAP

- Small weatherproof **w**all **A**ccess **P**oint
- 360 degree antenna
- 1x 100Mbps port
- 2,4GHz dual chain 802.11 b/g/n
- Black and white version



NEW

# WAP

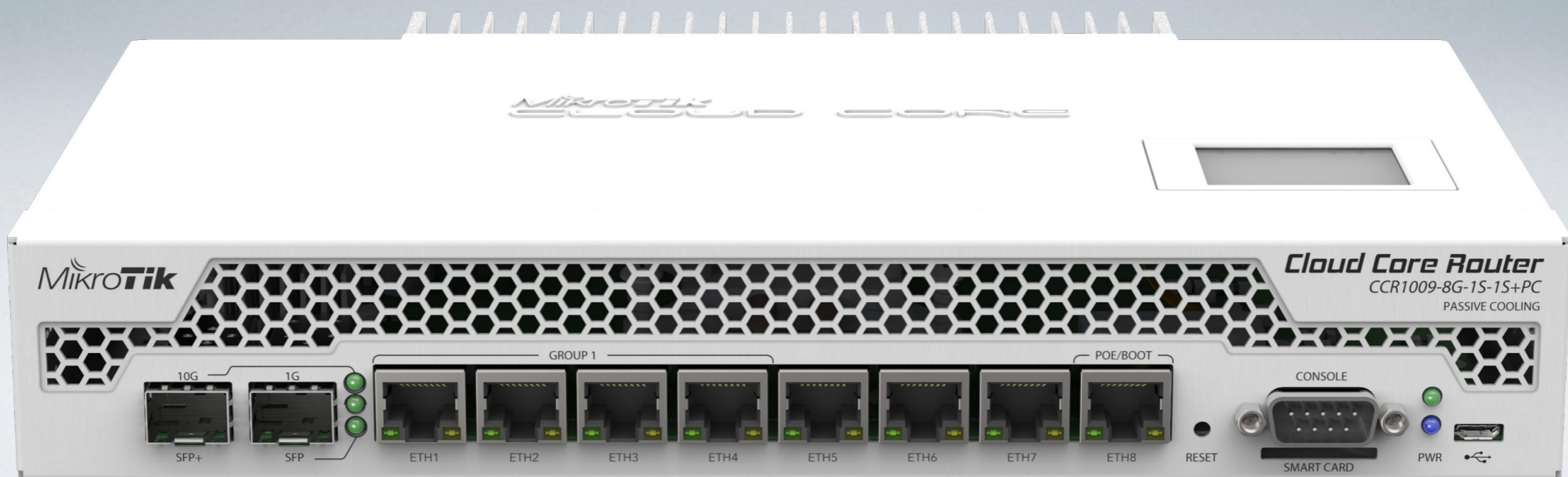


\$45



# CCR1009 PC

- 9 core 1GHz TILERA CPU (o/c up to 1.2GHz)
- Silent, passive cooling case
- 8 Gigabit Ethernet ports, 1 SFP and 1 SFP+ cage



\$495

# CCR1072



- 72 core 1GHz TILERA CPU (o/c up to 1.2GHz)
- Dual redundant hot-swap PSU
- 8 SFP+ cages and 1 Gigabit Ethernet port
- 16GB ECC RAM

\$3050

# CCR1072

CCR1072-1G-8S+		Tile 72 Core (1200Mhz, DDR1600) Max possible throughput					
Mode	Configuration	1518 byte		512 byte		64 byte	
		kpps	Mbps	kpps	Mbps	kpps	Mbps
Bridging	none (fast path)	6,502.0	78,960.3	18,790.0	76,963.8	119,047.6	60,952.4
Bridging	25 bridge filter rules	6,502.0	78,960.3	9,099.2	37,270.3	10,432.3	5,341.3
Routing	none (fast path)	6,502.0	78,960.3	18,790.0	76,963.8	94,668.4	48,470.2
Routing	25 simple queues	6,502.0	78,960.3	13,500.0	55,296.0	13,683.5	7,006.0
Routing	25 ip filter rules	5,247.6	63,726.9	6,125.5	25,090.0	6,104.0	3,125.2

CCR1072-1G-8S+		Tile 72 Core (1000Mhz, DDR1600) Max possible throughput					
Mode	Configuration	1518 byte		512 byte		64 byte	
		kpps	Mbps	kpps	Mbps	kpps	Mbps
Bridging	none (fast path)	6,502.0	78,960.3	18,790.0	76,963.8	98,873.5	50,623.2
Bridging	25 bridge filter rules	5,764.8	70,007.7	8,240.2	33,751.9	8,866.3	4,539.5
Routing	none (fast path)	6,502.0	78,960.3	18,790.0	76,963.8	76,201.0	39,014.9
Routing	25 simple queues	6,502.0	78,960.3	11,073.5	45,357.1	11,444.4	5,859.5
Routing	25 ip filter rules	4,664.7	56,648.1	5,200.3	21,300.4	5,321.0	2,724.4

# S+2332LC10D

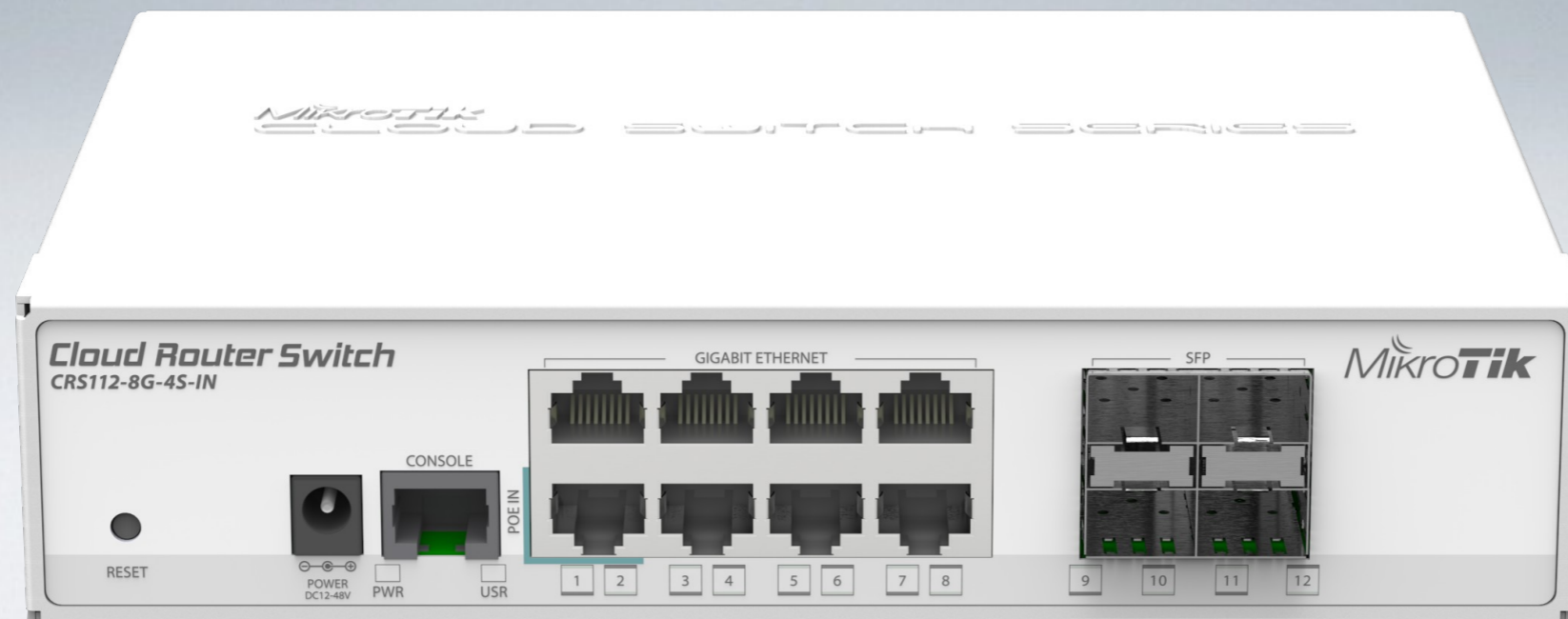
- Bidirectional SFP+ 10G module kit
- Two SFP+ modules
- Up to 10KM distance



\$349

# CRS112-8G-4S-IN

- Small size desktop switch
- 4 SFP cages and 8 Gigabit Ethernet ports



\$139

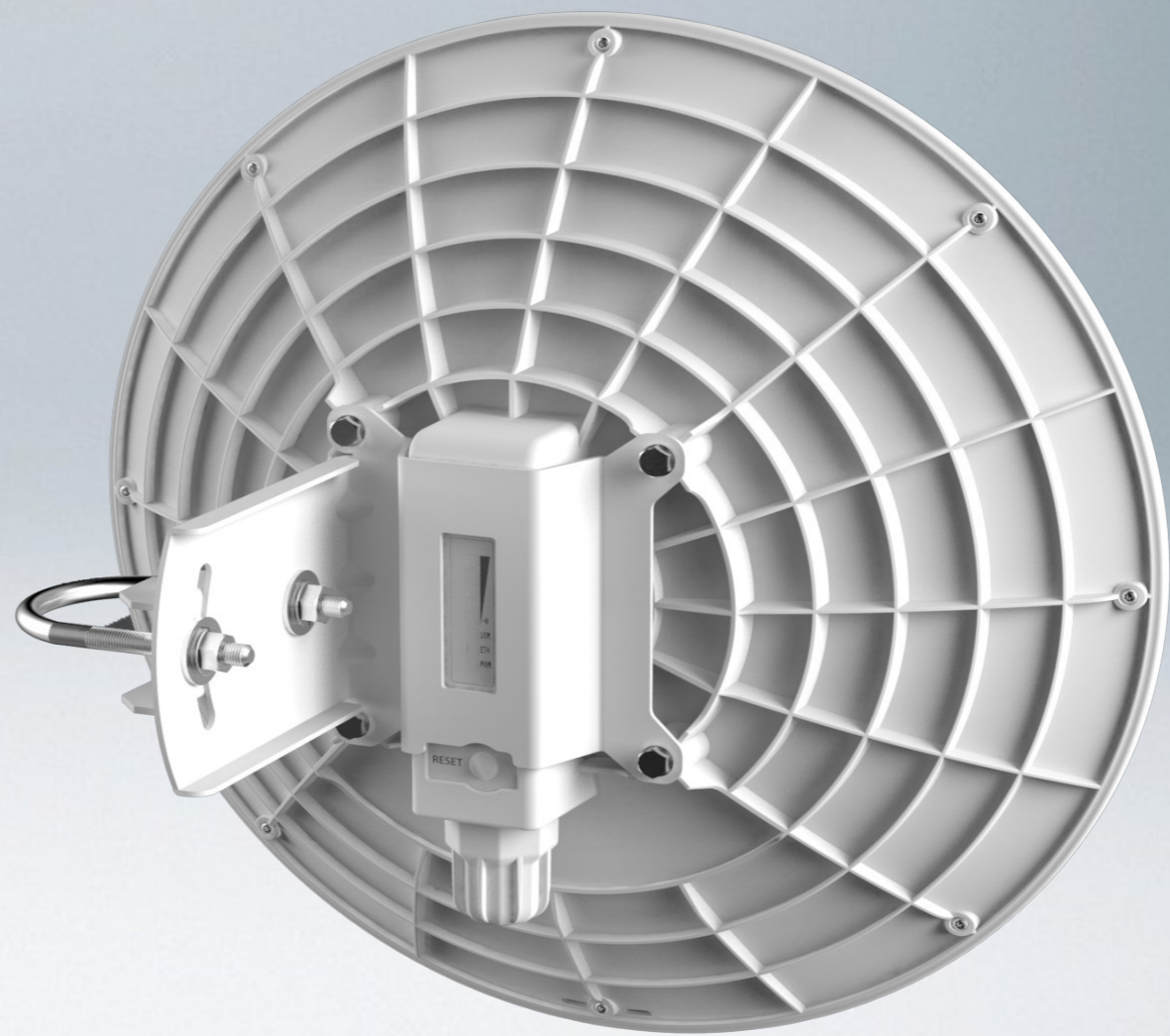
# QRT 5 ac

- 802.11ac upgrade for QRT 5
- Same robust design and antenna with upgraded internals for 802.11ac
- 720MHz CPU
- 300MHz DDR2 RAM



\$199

# DynaDish 5



\$179

# DynaDish 5

- New 802.11ac outdoor device
- Ideal for long distance point-to-point links
- 5GHz dual chain board integrated into 25dBi dish antenna with 8 degree beam width
- 720Mhz CPU
- 300MHz DDR2 RAM
- One Gigabit Ethernet port

\$179



# SXT HG5 AC



- 802.11ac upgrade for SXT HG5
- 720Mhz CPU
- DDR2 RAM
- 17dBi



\$119

# quickMOUNT

- Basic wall/pole mount adapter for small point-to-point and sector antennas
- Ideal for mounting two SXT units in repeater setup

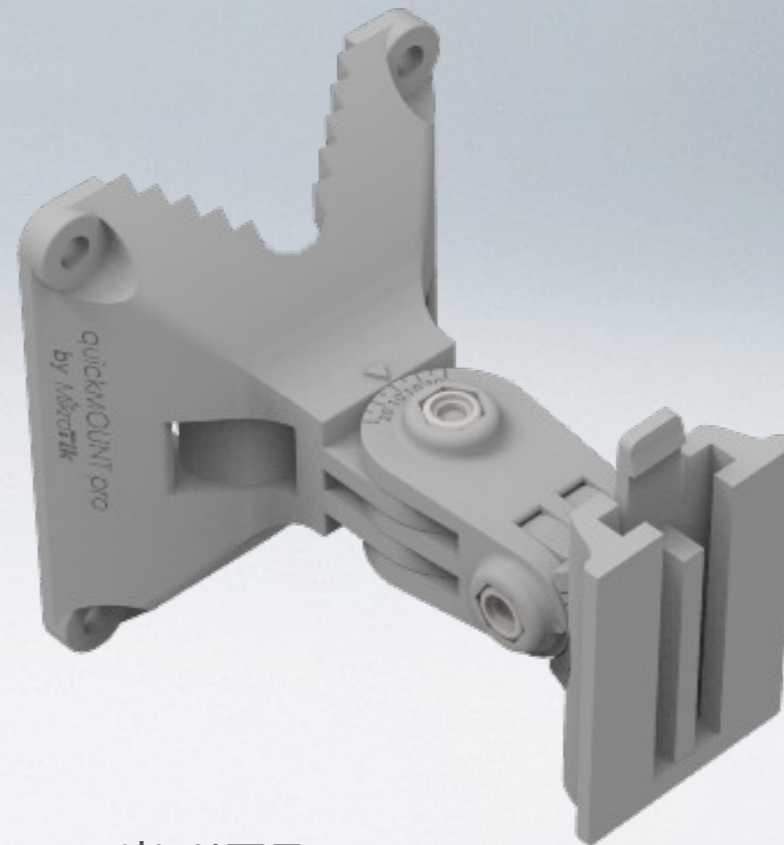


- special composite material - anvilNITE

\$5.50

# quickMOUNT PRO

- Advanced wall/pole mount adapter for small point-to-point and sector antennas
- Precise alignment



- special composite material - anvilNITE

\$9.50

NEW PRODUCTS

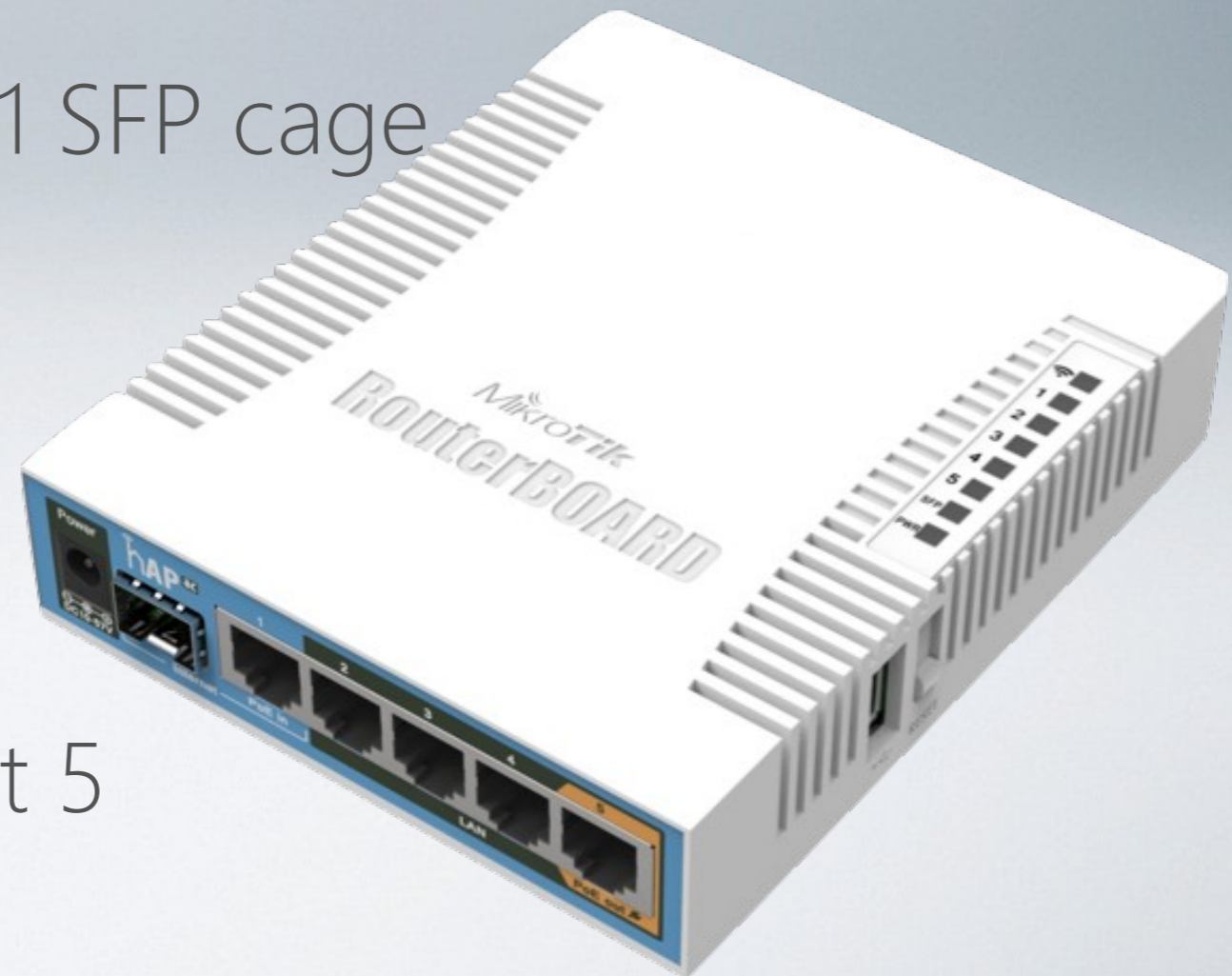
# hAP ac lite

- Our first **dual-band** home AP
- 2.4GHz dual chain 802.11b/g/n
- 5GHz single chain 802.11ac
- 5 Fast Ethernet ports
- 650MHz CPU
- 300MHz DDR2 RAM
- USB port
- PoE-in and PoE-out on port 5



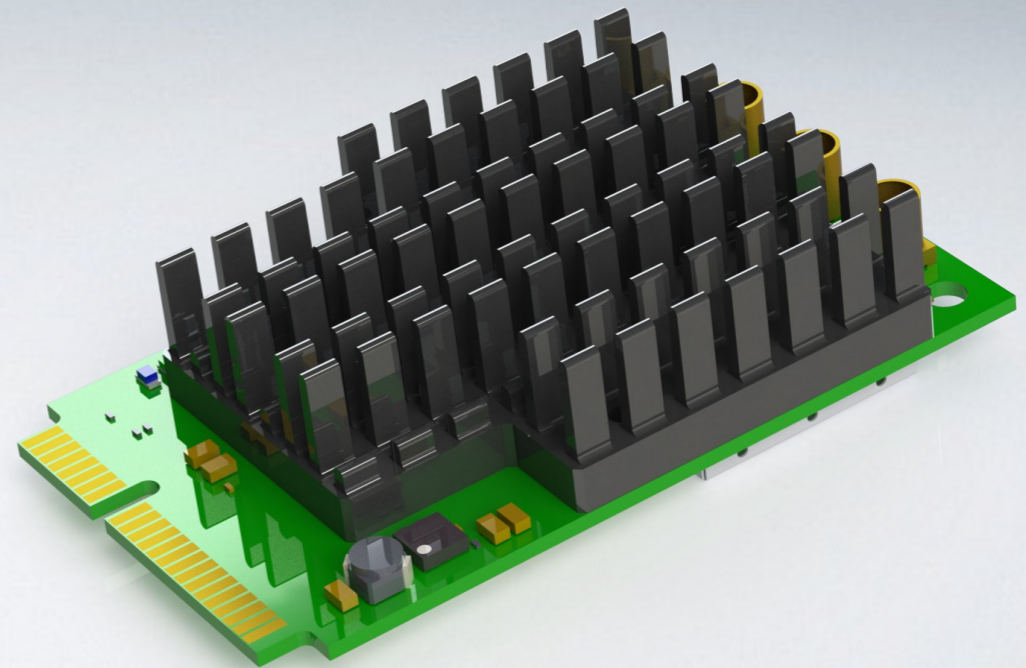
# hAP ac

- Our first Gigabit **dual-band** home AP
- 2.4GHz high power 3 chain 802.11b/g/n
- 5GHz high power 3 chain 802.11ac
- 5 Gigabit Ethernet ports & 1 SFP cage
- 720MHz CPU
- 300MHz DDR2 RAM
- USB port
- PoE-in and PoE-out on port 5



# R11e-5HacT

- miniPCIe card with 5GHz 3 chain 802.11ac
- Upgrade your existing devices to 802.11ac standard
- MMCX connectors



# RB3011 Series

- Upgrade for RB2011 Series
- Dual core 1.4GHz ARM CPU
- 10x Gigabit Ethernet ports and 1 SFP cage
- miniPCIe slot (replacing built-in wireless card)
- More than 2x performance
- PoE-Out (up to 0,7A) on ether10
- Regular size USB3



# RB3011 Series



# RB3011 Series



- RB3011UiAS-RM: \$179
- RB3011UiAS-2HnD-IN: \$199

NEW

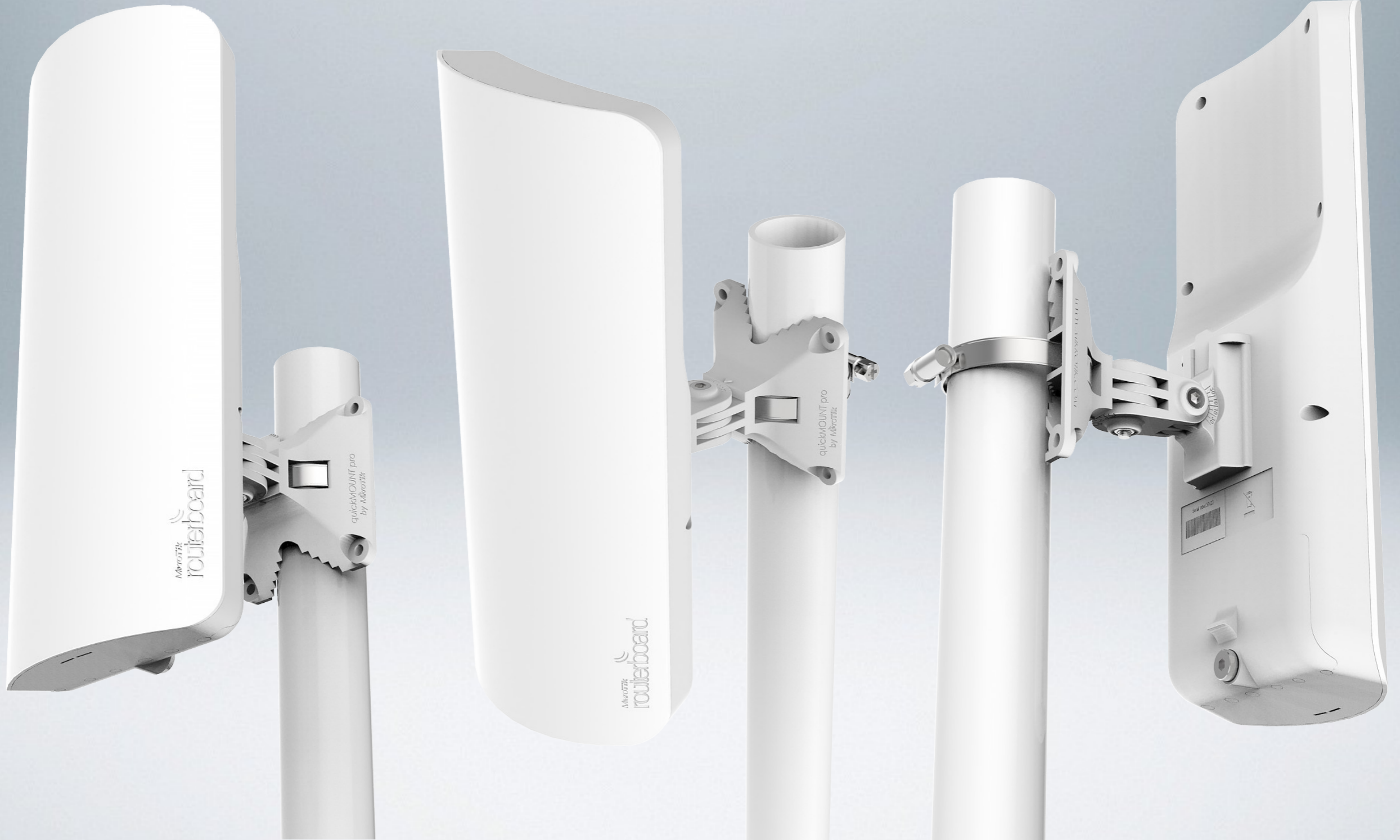
# MikroTik Sector Antennas

- 19dBi and 15dBi
- Dual Polarization
- 2x RP-SMA connectors
- Frequency Range  
5.170-5.825 GHz
- 120 degree



# mANT 15s

NEW



# mANT 19s

NEW



# All products

- Include free software upgrades for life
- Run the same MikroTik RouterOS software
- Can be purchased from our worldwide distributor network

Software features

# RoMON

- Router Management Overlay Network
- Secure Layer 2 style access to all MikroTik RouterOS devices
- Works similar to neighbor discovery only over multiple hops
- Discover, manage and upgrade your entire remote network with an easy to use tool
- More info in our manual:

<http://wiki.mikrotik.com/wiki/Manual:RoMON>



# WinBox 3

WinBox v3.0rc16 (Addresses) [Minimize] [Maximize] [Close]

File Tools

Connect To:   Keep Password  
Login:   Secure Mode  
Password:   Autosave Session  
Session:  [v]   Open In New Window  
Note:   
Group:  [v]  
RoMON Agent:  [v]

Managed Neighbors

[v]

MAC Address	IP Address	Identity	Version	Board	
<b>CRS125-24G-1S-2HnD</b>					
00:0C:42:00:C4:D2	10.5.100.254	MikroTik	6.33rc16 (testing)	CRS125-24G-1S-2HnD	
<b>RB951-2n</b>					
D4:CA:6D:2D:88:CE	10.5.100.154	MikroTik	6.33rc16 (testing)	RB951-2n	
D4:CA:6D:2F:47:C0	10.5.100.155	MikroTik	6.33rc16 (testing)	RB951-2n	
D4:CA:6D:7C:FA:C6	10.5.100.156	MikroTik	6.33rc16 (testing)	RB951-2n	
<b>x86</b>					
2C:41:38:B7:7B:E1	10.5.100.203	Platais	6.33rc16 (testing)	x86	
D4:CA:6D:13:7E:A1	10.5.100.200	Shaurais	6.33rc16 (testing)	x86	

6 items

# WinBox 3

- Open, Save, Import, Export and Protect (set password) to your device lists
- Load, Save and Manage your session layout preferences
- Use any MikroTik RouterOS device as RoMON agent
- Discover all RoMON enabled devices in the RoMON agent's connected network
- Connect to internal RoMON enabled devices via WinBox





# FastPath + Conntrack = FastTrack

- Implemented as action for firewall filter/mangle
- Flags connection tracking entries as "FastTracked"
- Works with IPv4/TCP and IPv4/UDP
- Some packets still will go the regular path to maintain connection tracking table

# FastTrack

IF Settings

IP Forward OK

Firewall

Filter Rules NAT Mangle Service Ports Connections Address Lists Layer7 Protocols

+ - ✓ ✗ 📁 🔍 uu Reset Counters uu Reset All Counters Find forward

#	Action	Chain	Src...	Dst....	Prot...	Src. Port	Dst. Port	In. I...	Out....	Bytes	Packets
::: Drop new connections from internet that is not dst-natted											
52	✗ drop	forward						eth...		0 B	0
::: fasttrack connections that have related and established packets											
53	▶▶ fasttrack connection	forward								240.2 MiB	319 850
::: accept related and established packets											
54	✓ accept	forward								240.2 MiB	319 850
::: drop invalid packets											
55	✗ drop	forward								40.9 KiB	765
::: drop data to bogon IP's											
56	✗ drop	forward						brid...		143.0 KiB	2 398
::: Drop all other local subnets											
57	✗ drop	forward	!19...					brid...		0 B	0
::: drop data from bogon IP's											
58	✗ drop	forward						eth...		0 B	0
::: jump to viruses chain											

9 items out of 335 (1 selected)

IPv4 Fasttrack Active

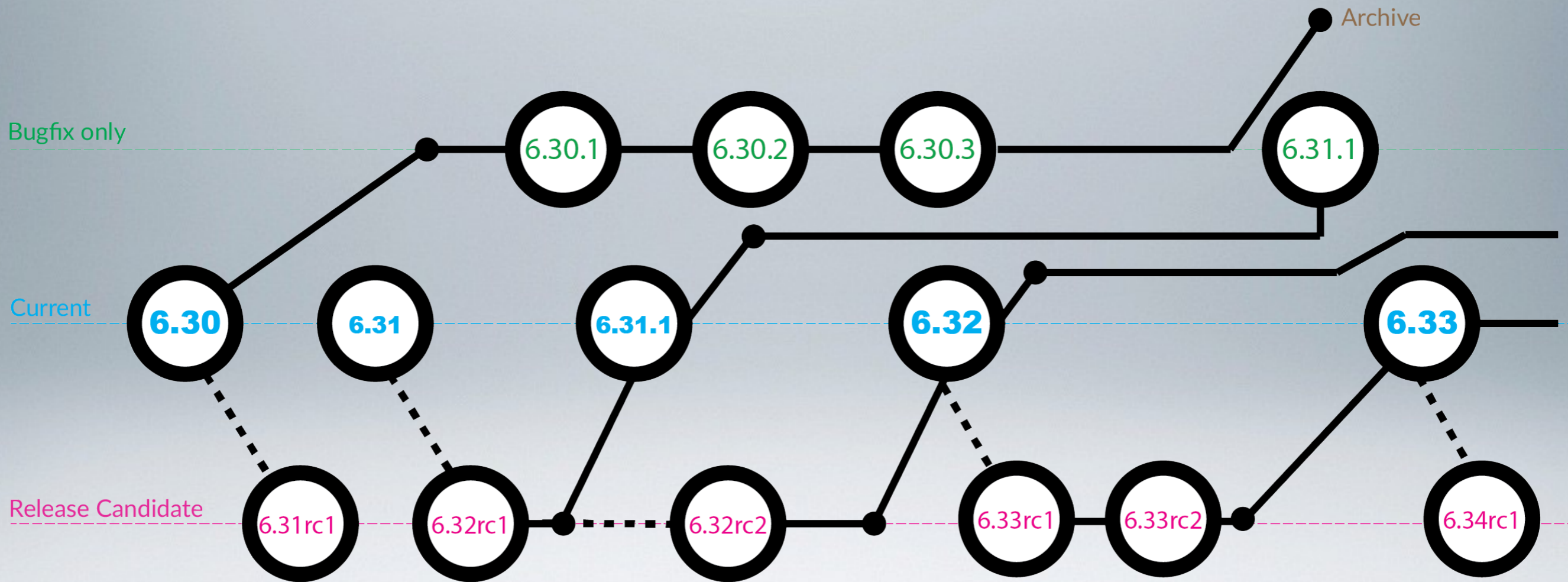
IPv4 Fasttrack Packets: 19 773 551

IPv4 Fasttrack Bytes: 15.1 GiB

# RouterOS version types

- **Bugfix** – stable RouterOS v6 version with all known bugfixes included
- **Current** – RouterOS v6 version with the latest set of tested features and fixes
- **Release candidate** – RouterOS v6 version to try-out and test fresh features and fixes
- **Development** – RouterOS v7 beta versions (not available yet)
- **Legacy** – RouterOS v5 latest version

# Life cycle





# New RouterOS version release system

## Download MikroTik software products

### RouterOS

Please select version:

**Bugfix (6.30.4)** ▼

Bugfix (6.30.4)

Current (6.32.2)

Legacy (5.26)

Release candidate (6.33rc16)

Please choose your instruction set:

***mipsbe*** BaseBox, CRS series, NetBox, NetMetal, PowerBox, QRT, RB4xx series, RB  
DynaDish, RB2011 series, SXT, OmniTik, Groove, Metal, Sextant

***ppc*** RB3xx series, RB600 series, RB800 series, RB1100, RB1000

***x86*** PC / X86, RB230 series

***mipsle*** RB1xx series, RB5xx series, Crossroads

***tile*** CCR series

***smips*** hAP lite

### SwitchOS

***switches*** RB250GS, RB260GS, RB260GSP

By downloading any of the files on this page, you agree to the terms and conditions

# Check for Updates

Package List

Check For Updates

Name	Version
option	6.33rc16
routeros-mipsbe	6.33rc16
advanced-t...	6.33rc16
dhcp	6.33rc16
hotspot	6.33rc16
ipv6	6.33rc16
mpls	6.33rc16
ppp	6.33rc16
routing	6.33rc16
security	6.33rc16
system	6.33rc16
wireless-cm2	6.33rc16
wireless-fp	6.33rc16

13 items

Check For Updates

Channel: bugfix only  
bugfix only  
current  
release candidate  
development

Installed Version: 6.30.4  
Latest Version: 6.30.4

OK  
Download  
Download&Install

What's new in 6.30.4 (Aug.25.15-12:59:46)

- \*) bridge fastpath - fixed updating bridge FDB on receive (could cause TX traffic flooding on all bridge ports)
- \*) bonding fastpath - fixed possible crash when bonding master was also a bridge port
- \*) user-manager - fixed zoom for user-manager homepage when mobile devices used
- \*) tool fetch - don't trim [t]ftp leading slashes
- \*) conntrack - fixed problem with manual connection removal
- \*) winbox - restrict change dynamic interface fields
- \*) romon - fixed crash on SACKed tx segments
- \*) route - fixed crash on removing route that was aggregated;
- \*) ipsec - fixed crash in when gcm encryption was used
- \*) ipsec - allow to set peer address as "::/0"
- \*) ipsec - fixed empty sa-src address on acquire in tun mode
- \*) ipsec - show proposal info in export ipsec section
- \*) ipsec - preserve port wildcard when generating policy without port override
- \*) ipsec - fix replay window, was accidentally disabled since version 6.30;

What's new in 6.30.3 (2015-Jul-24 08:06):

factory-only release

What's new in 6.30.2 (2015-Jul-22 11:17):

- \*) pptp & l2tp - fixed problem where android client could not connect if

New version is available

# CHR

## Cloud Hosted Router

- Special virtual machine image for VMware, VirtualBox, HyperV, Qemu and more
- No traditional license key
- 1Mbit limit per interface = free use
- Unlimited subscriptions coming soon
- All info @ <http://forum.mikrotik.com>

# Newest Features

- FastPath support for MAC-winbox, MAC-telnet, Traffic Flow
- CoA support for PPP
- PPPoE support for MTU > 1492
- All Tunnels support DNS name as remote address
- Improvements for 802.11ac chip-set single connection TCP performance (802.11)

# Need help?

- Ask a local **distributor**
- Read the manual **wiki.mikrotik.com**
- Look/ask on the **forum.mikrotik.com**
- Email **[support@mikrotik.com](mailto:support@mikrotik.com)**
- Hire a **consultant**
- Attend a training class or join an Academy class in a University

Enjoy the MUM!