



MikroTik User Meeting
Cambodia 2017



What do we do?

We create networks

Our products include

RouterOS

built and advanced for more than 20
years

RouterBOARD

Wireless outdoor, indoor, Ethernet
routers

CRS

Switches with RouterOS

CSS

Switches with SwOS

MikroTik

- Established 1996
- RouterOS created in 1997
- RouterBOARD created in 2002
- First MUM event in Prague 2006
- MUM in Indonesia had 2500 people
- 34 events in 2016



Iceland

Finland

Sweden

Russia

Norway

Estonia

Latvia

Denmark

Lithuania

Ireland

United Kingdom

Belarus

Netherlands

Poland

Belgium

Germany

Ukraine

Luxembourg

Czech Republic

Slovakia

France

Switzerland

Liecht

Austria

Hungary

Moldova

Romania

Georgia

Monaco

San Marino

Bosnia and Herzegovina

Serbia

Armenia

Andorra

Portugal

Spain

Italy

Montenegro

Bulgaria

Vatican City

Albania

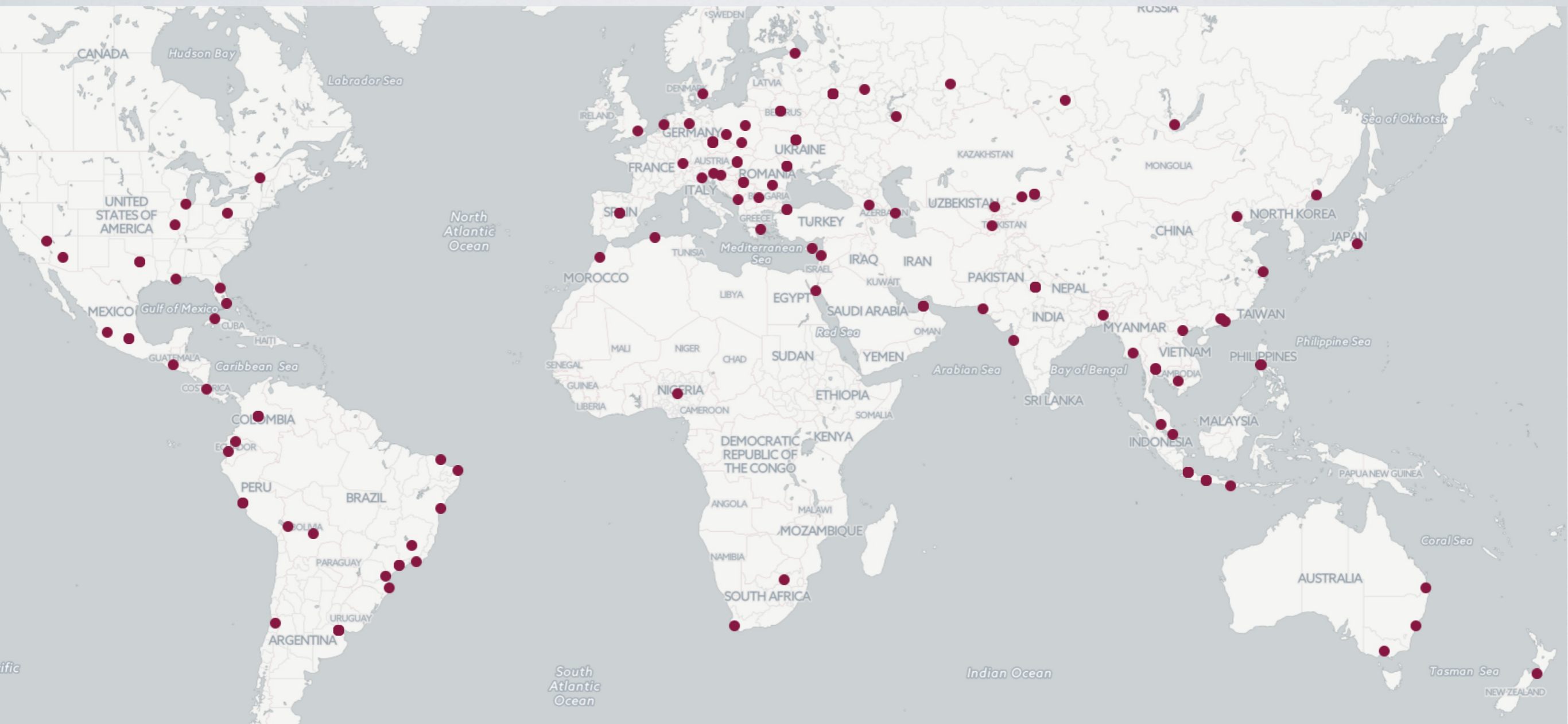
Macedonia

Turkey

Greece

Syria

no matter where you are



Special thanks!

Innovation Technology Training Center (ITTC)



MikroTik staff available!

Martins – Support

Pauls – Support

Edmunds – Sales/Training



STAFF

Agenda

08:00	Check-in
09:00	Opening
09:45	Presentations (Part 1)
12:30	Lunch (with voucher) at Café Monivong
13:30	Presentations (Part 2)
17:15	Lottery
17:45	Evening drinks

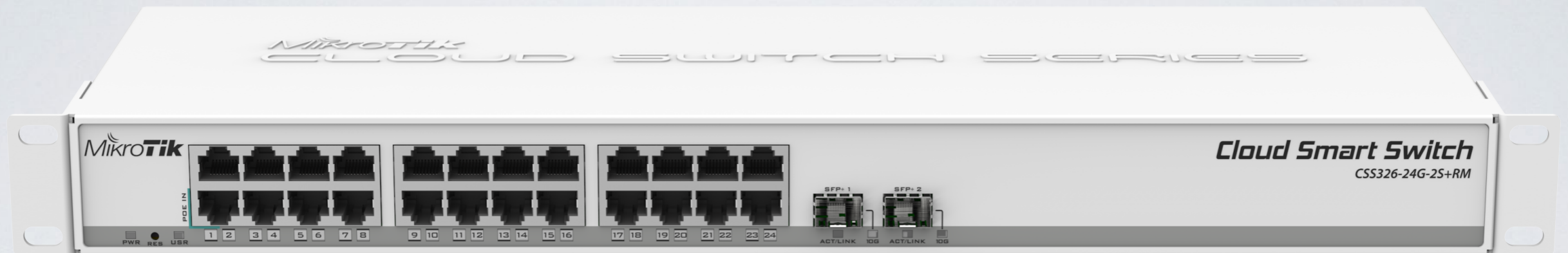
shall we?

cAP lite

- Small and light 2GHz AP
- Case can be changed
- Print your own cases
- Perfect for hotel, public areas and extending networks in your house





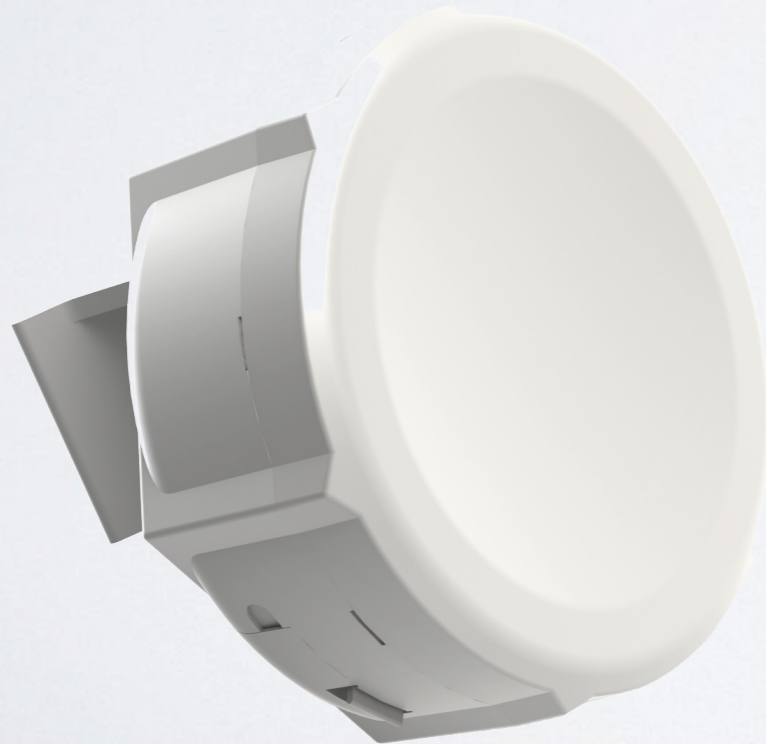


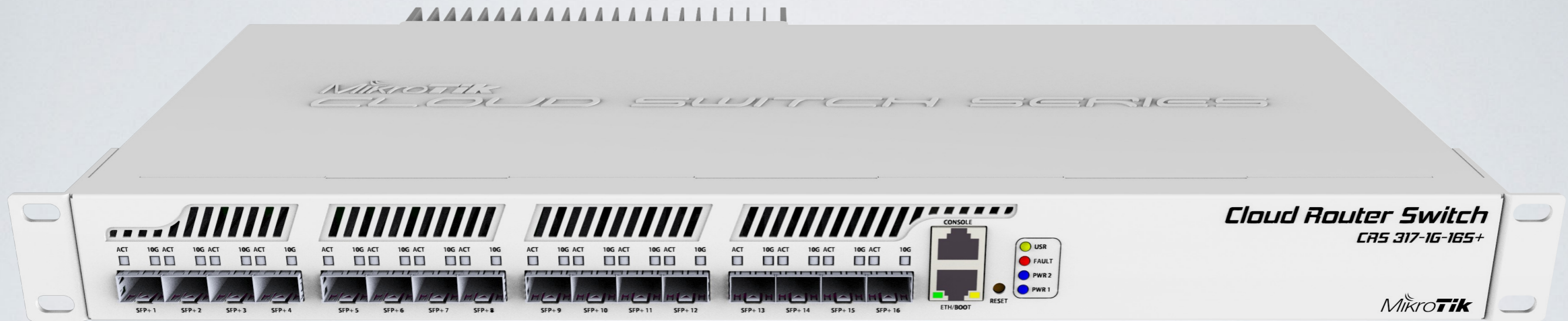
CSS326-24G-2S+RM

Multiport SwOS switch

DynaDish 6 and SXT 6

- Great for use in less used 6GHz spectrum
- Same familiar designs





CRS317-1G-16S+

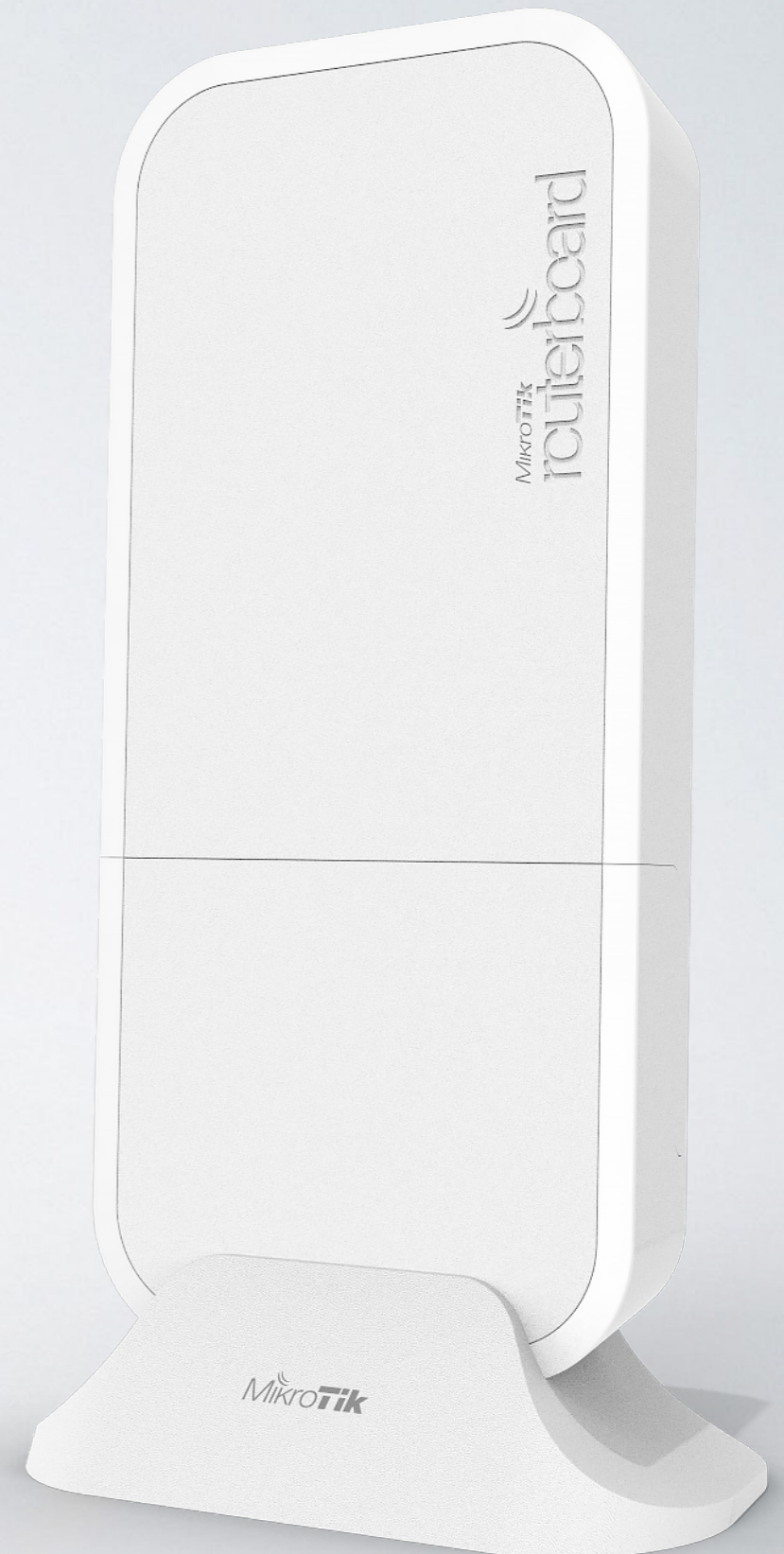
high performance SFP+ switch

CRS317-1G-16S+

- 16 SFP+ ports
- Next generation switching chip
- Wire speed for all 10GbE ports
- Hardware-based Spanning Tree Protocol
- Dual boot SwOS or RouterOS

wAP LTE kit

- Wireless AP for LTE
- EU version supports LTE bands 1,2,3,7,8,20,38,40
- 2G, 3G, LTE supported
- Optional external antennas
- Comes with a stand mount

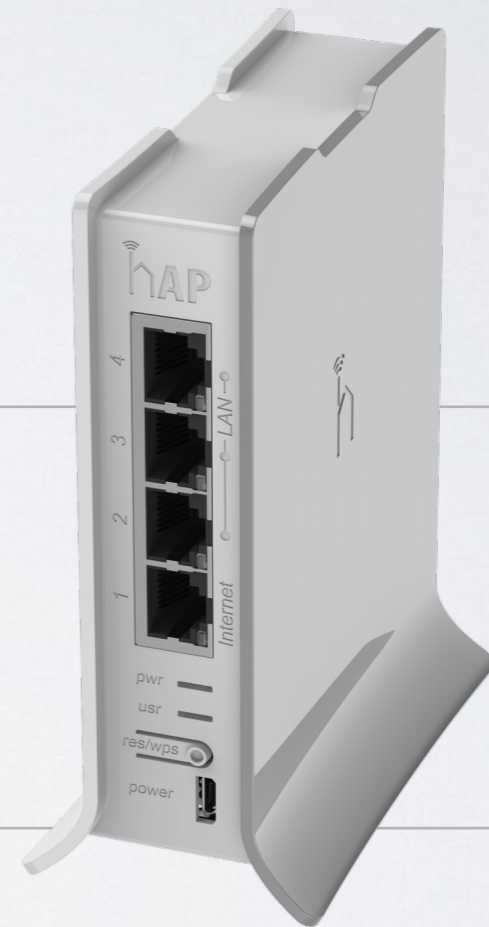


hAP mini

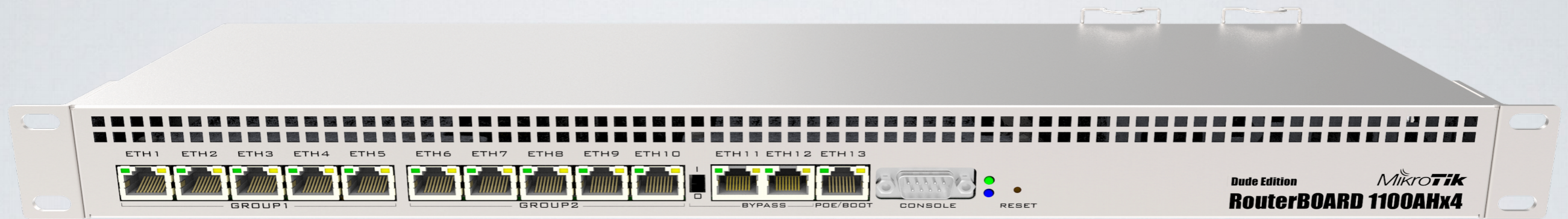
- Tiny 2GHz AP with three ports
- Upright design in new colours
- Only 8cm tall
- Two LAN ports, one WAN
- Configure differently if needed



8cm



12cm

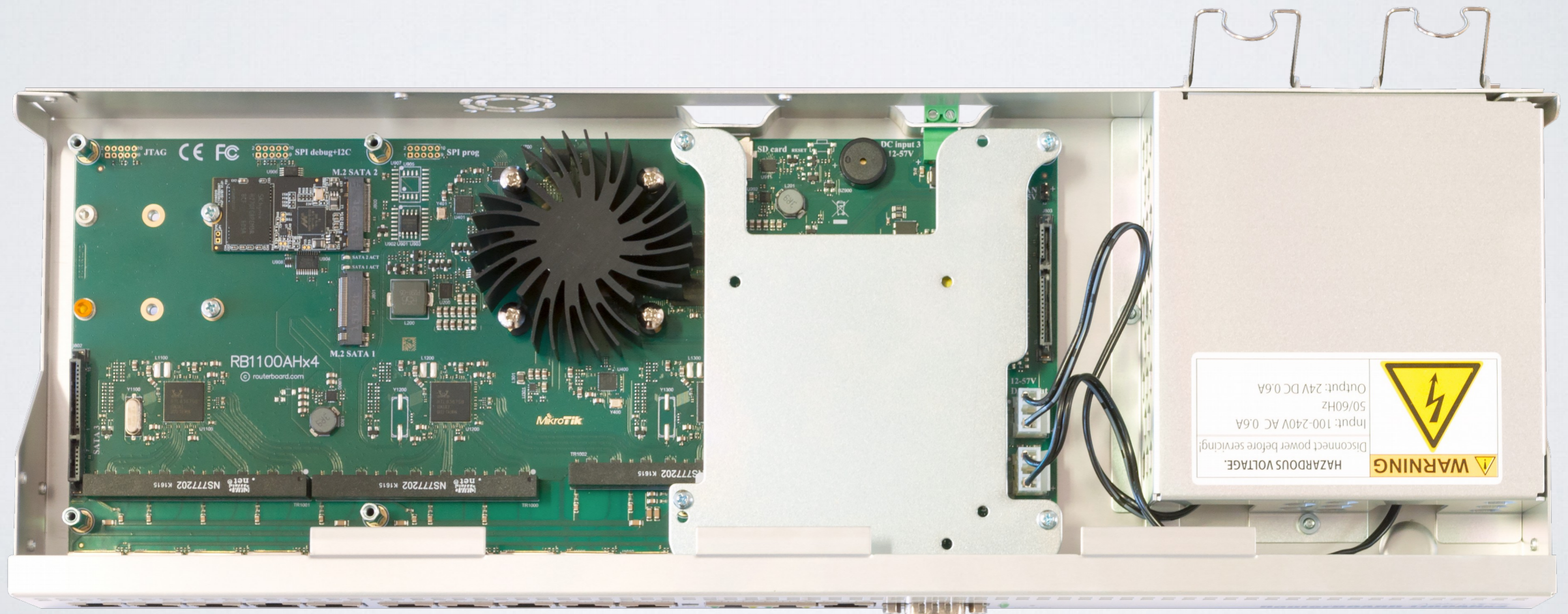


RBI 100AHx4

The timeless classic upgraded
with a new quad core CPU and more

Annapurna Alpine AL21400 CPU with four Cortex A15 cores clocked at 1.4 GHz

- Two SATA3 ports
- Two M.2 ports
- 60GB SSD included
- Accelerated IPsec
- -48V DC telecom power
- Dual PSU





- 5.5 million PPS
- 7.5Gbps
- IPsec up to 2.2Gbps with AES128
- Overclock up to 2GHz

Two editions

- RB1100AHx4
- RB1100AHx4 Dude edition
includes 2x M2 and 2x SATA3
ports

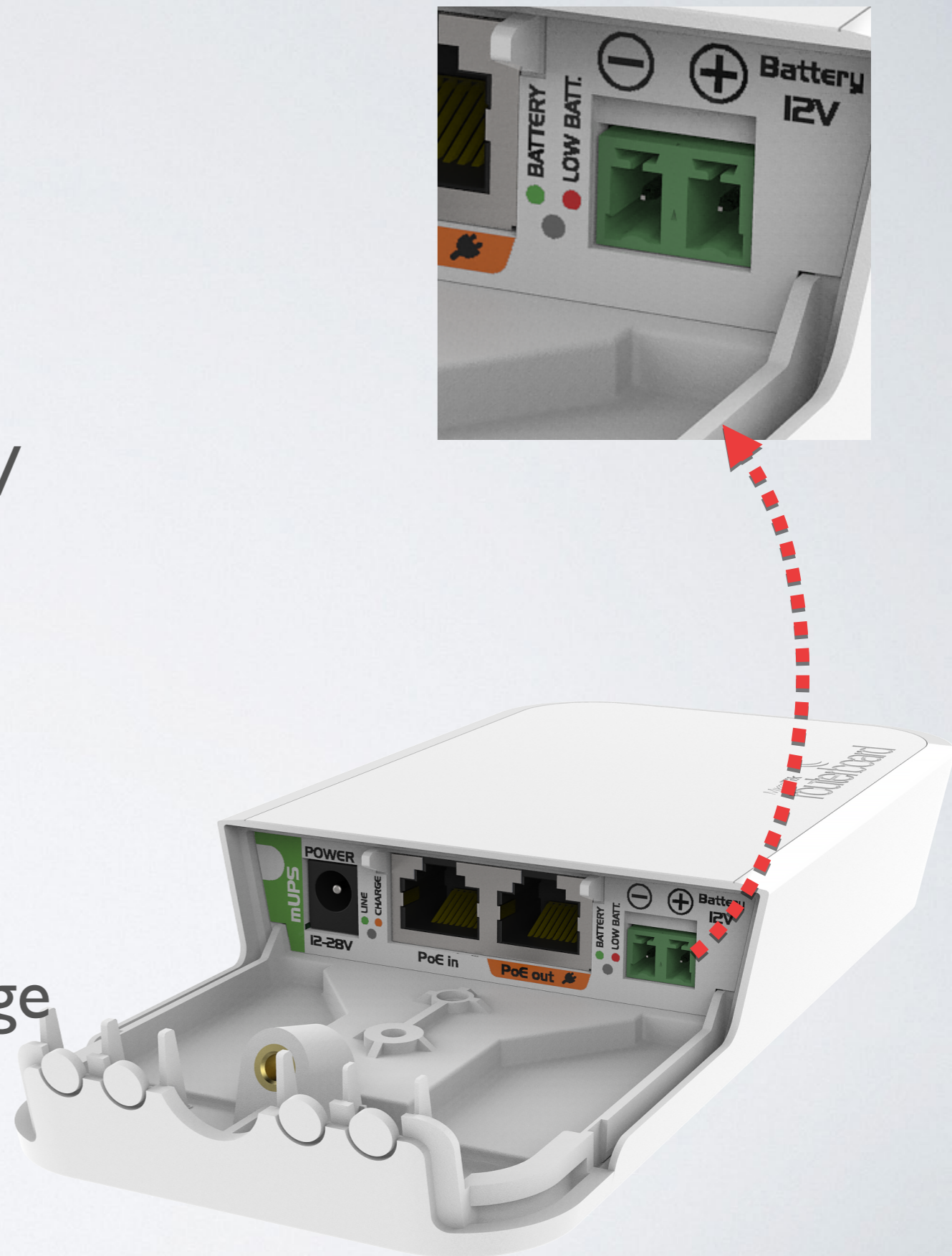
PowerBox Pro

- Gigabit ethernet ports
- PoE output for your CPEs
- Same as hEX PoE
- Supports 802.3af/at
- SFP for fiber to the tower
- Improved design



mUPS

- Just like a smart PoE injector
- Battery connector for 12V batteries (external)
- Battery kicks in when power is lost
- Step up converter keeps device going even if Voltage differs
- Can charge and monitor



LtAP mini

- 2GHz AP in a rugged case
- miniPCle for LTE
- Built in GPS
- Serial port for other devices
- Perfect for cars or outdoor mobile applications





LtAP

- 2x miniPCle
- Built in 2.4GHz AP
- MMIPS Mediatek CPU 880MHz
- 2x MMCX connectors
- Built in GPS

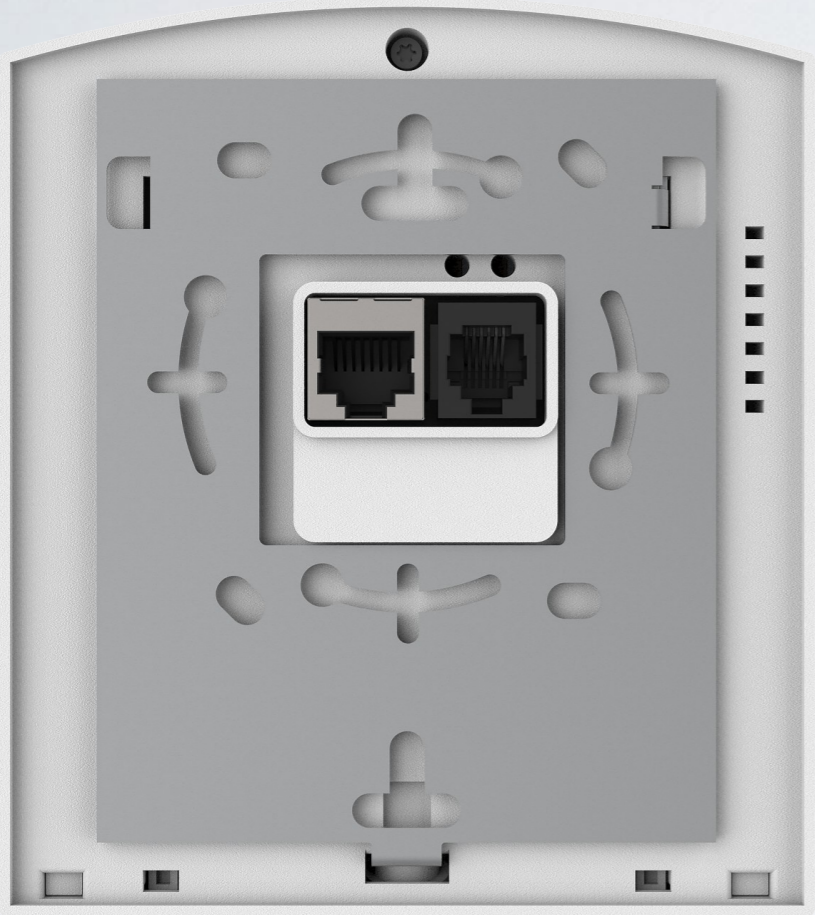


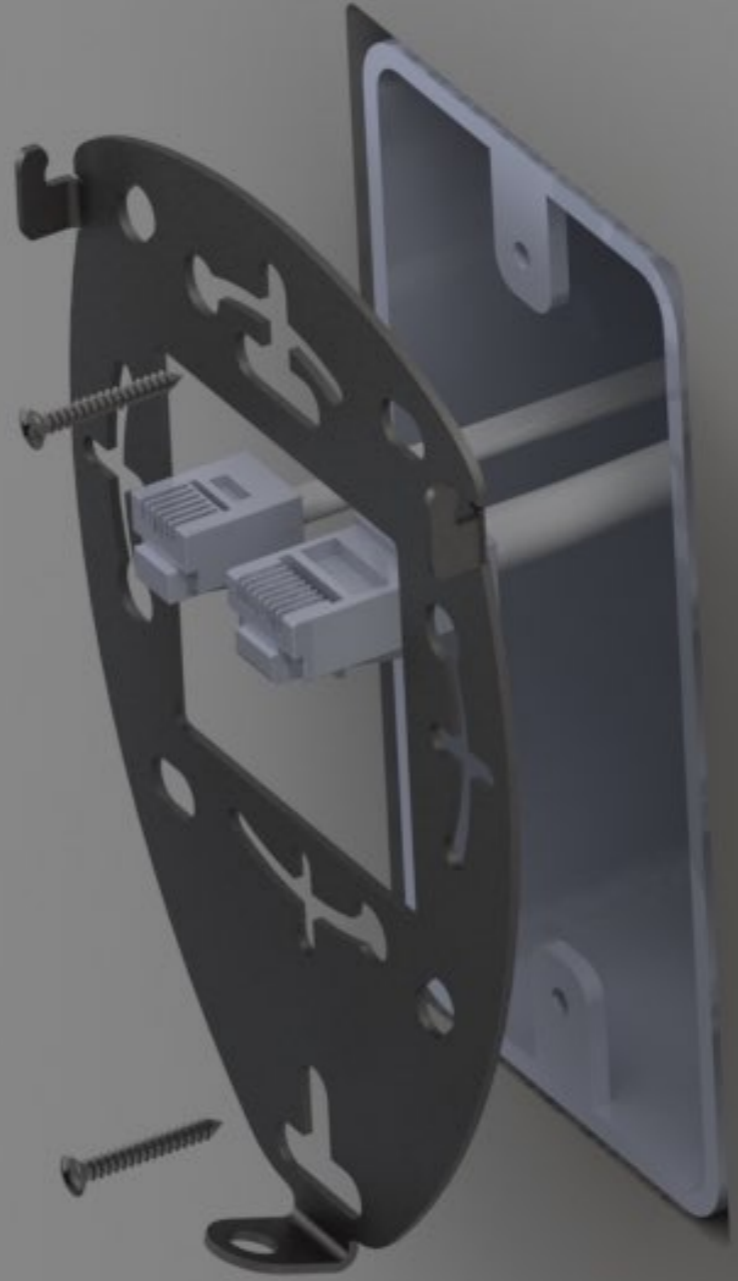


wsAP ac lite

- Mount into standard EU or US electrical sockets
- Dual band ac
- Phone jack passthrough
- Two LAN ports
- USB for charging phones







wAP 60G

- 1 Gbit full duplex (wire speed)
- “Wireless wire” kit preconfigured
- Works in 60GHz spectrum
- Quad-core ARM CPU
- Targeted for up to 100m distances
- Q2/Q3



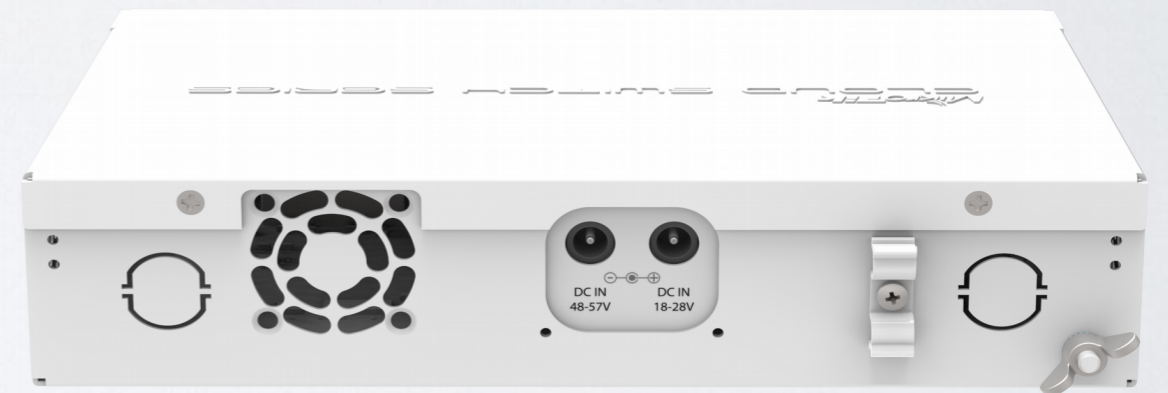
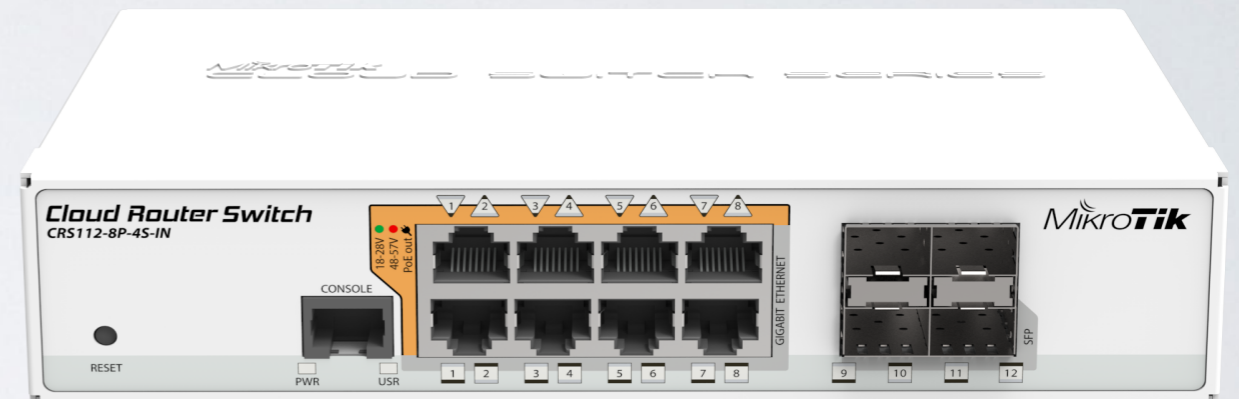
LHG 60G

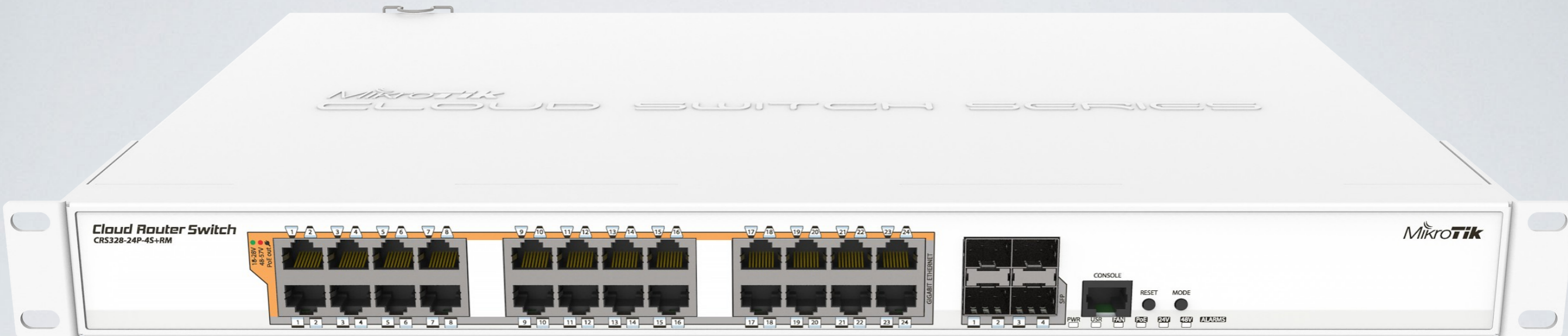
- 1 Gbit full duplex (wire speed)
- Works in 60GHz spectrum
- Familiar LHG design
- Quad-core ARM CPU
- Low cost and low weight
- Longer distance than 100m
- Q2/Q3



CRS112-8P-4S

- PoE out 802.3af/at
- Eight gigabit ports
- Separate PSU for passive or 802.3af/at PoE out
- Low voltage PSU included
- Per port auto detection of PoE standard
- Four SFP ports





CRS328-24P-4S+RM

PoE out switch

CRS328-24P-4S+RM

- Dual boot SwOS or RouterOS
- 24 ports with PoE out function
- Supports 802.3af/at output
- Per port auto detection of PoE standard
- Four SFP+ ports for 10GbE
- One 120/220V IEC connector

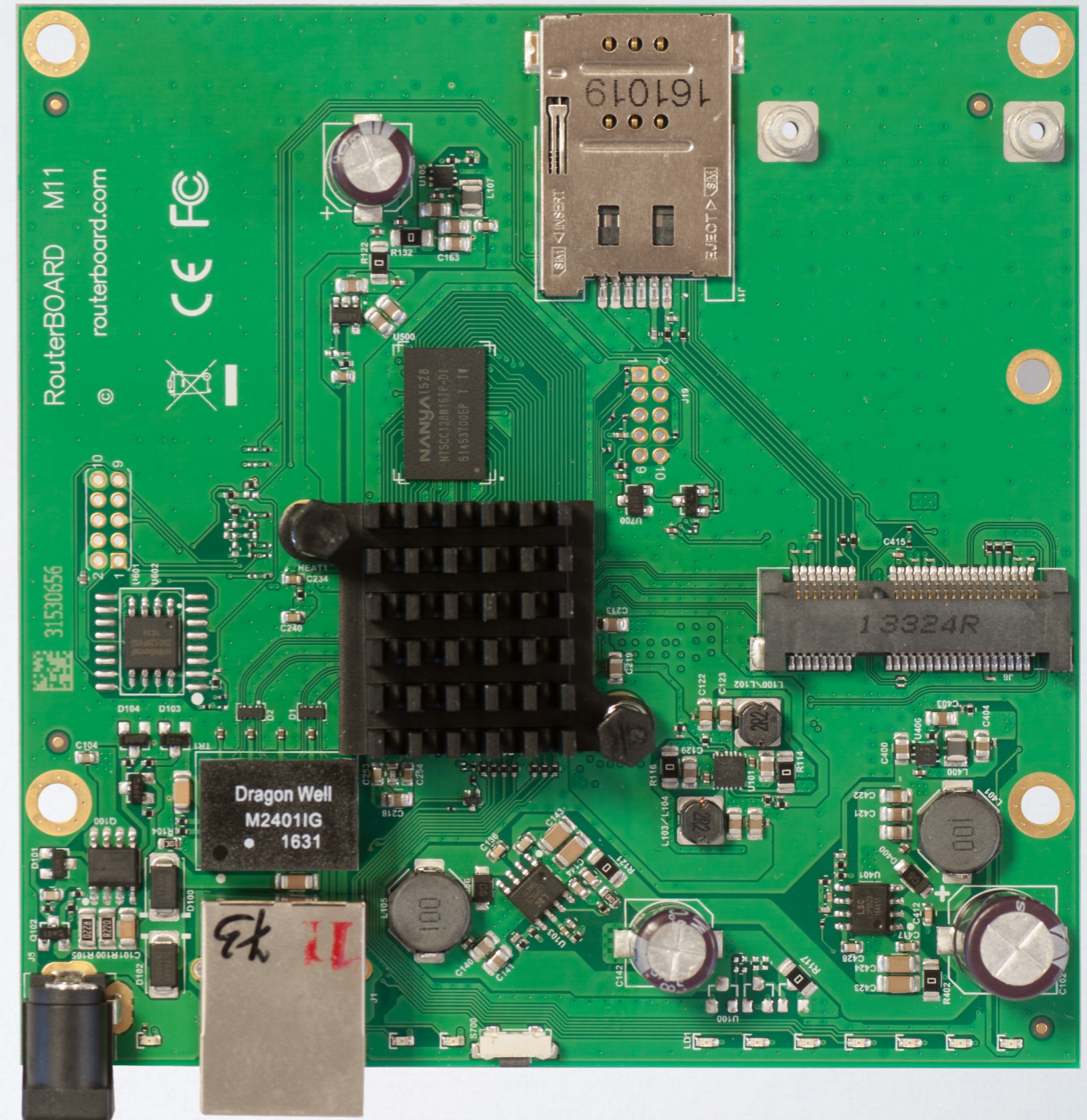
Woobm

- Wireless out of band management (Woobm)
- Plug into a device to have a new management AP
- Can work as client to use in CCR rackmounts



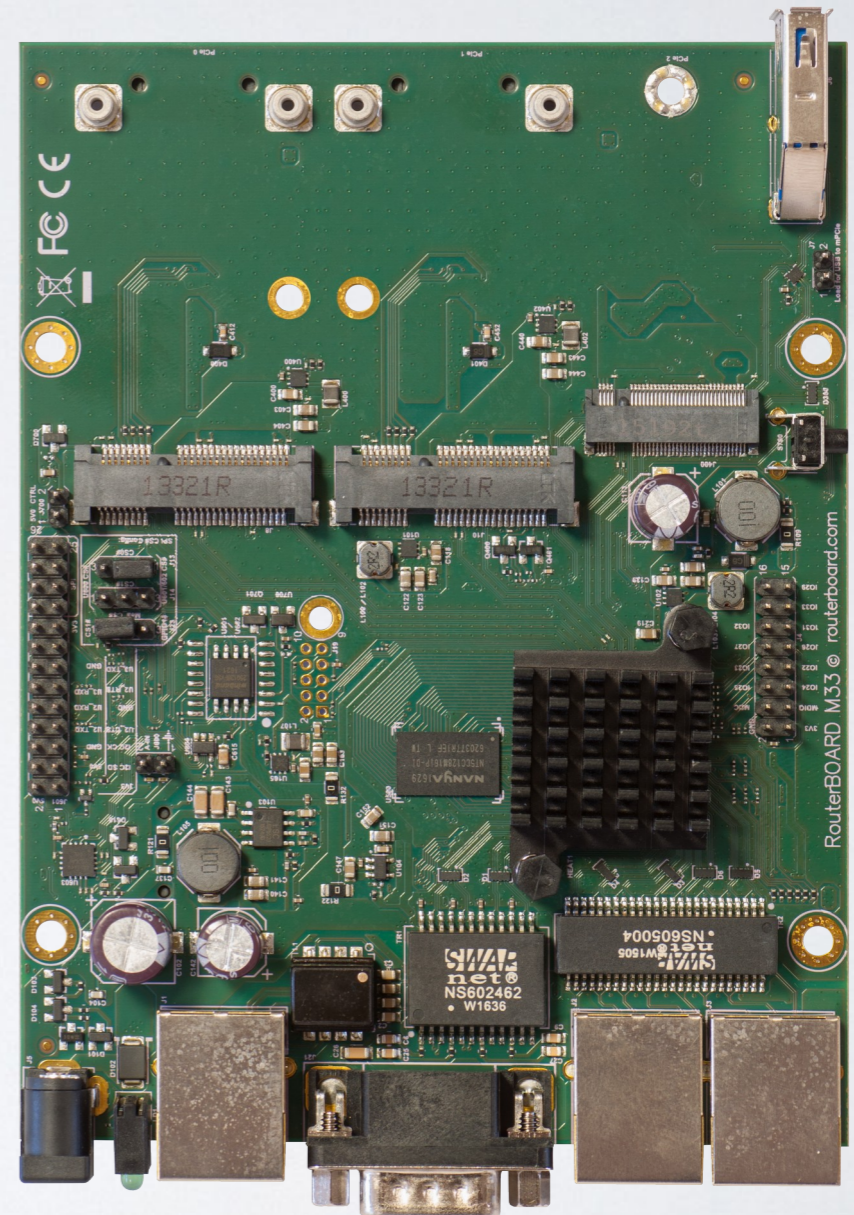
M11

- Four core 880MHz CPU
- 1 miniPCIe slot
- 1 Gigabit ethernet



M33

- Four core 880MHz CPU
- 3 Gigabit ethernet
- 2 miniPCIe slots
- 1 M.2 slot
- USB 3.0 and Serial port





*Mikro***Tik**

The logo for MikroTik features a stylized icon of three curved lines above the letter 'i' in 'Mikro'. The word 'Mikro' is written in a black, italicized sans-serif font, while 'Tik' is in a bold, black, italicized sans-serif font.