

The logo for Microtik, featuring the word "Micro" in a white, italicized serif font, a stylized white crescent shape above the letter "o", and the word "tik" in a white, bold, italicized sans-serif font. The background is a blurred office interior with desks, chairs, and windows, overlaid with a red-to-purple gradient.

*Micro* **tik**

CDMX

ABRIL 2019



WHAT DO WE DO?

The background features a blurred image of various network hardware components, including a black HAPs (Home Access Point) device on the left, a white patch panel in the center, and several white network switches on the right. The entire scene is overlaid with a semi-transparent purple-to-pink gradient. A white rectangular border frames the central text.

WE MAKE SOFTWARE AND HARDWARE

# MORE THAN 200 PRODUCTS



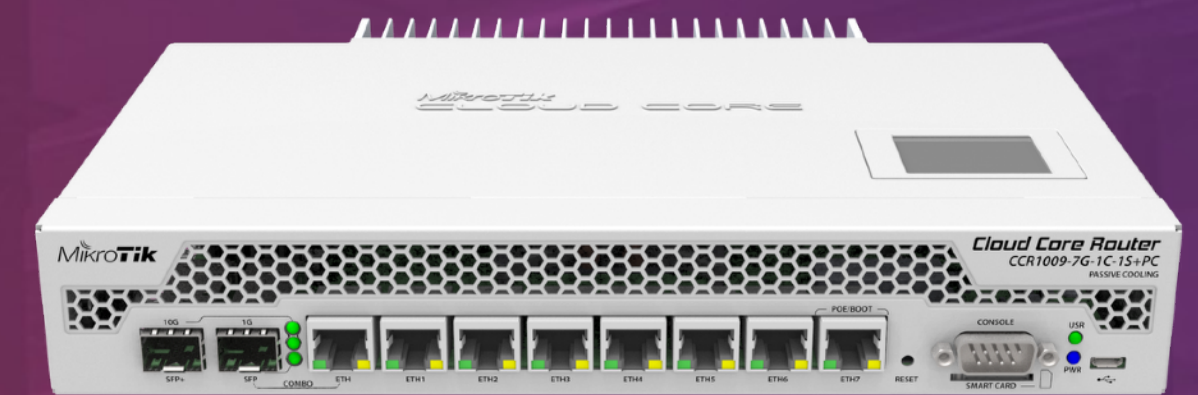
HOME



OUTDOOR



SOHO



CARRIER

A world map with a color gradient from red on the left to purple on the right. A white dot is placed on the map of Latvia. The word "LATVIA" is written in white capital letters across the center of the map.

LATVIA

# MikroTik

- Established in 1996
- RouterOS created in 1997
- RouterBOARD created in 2002

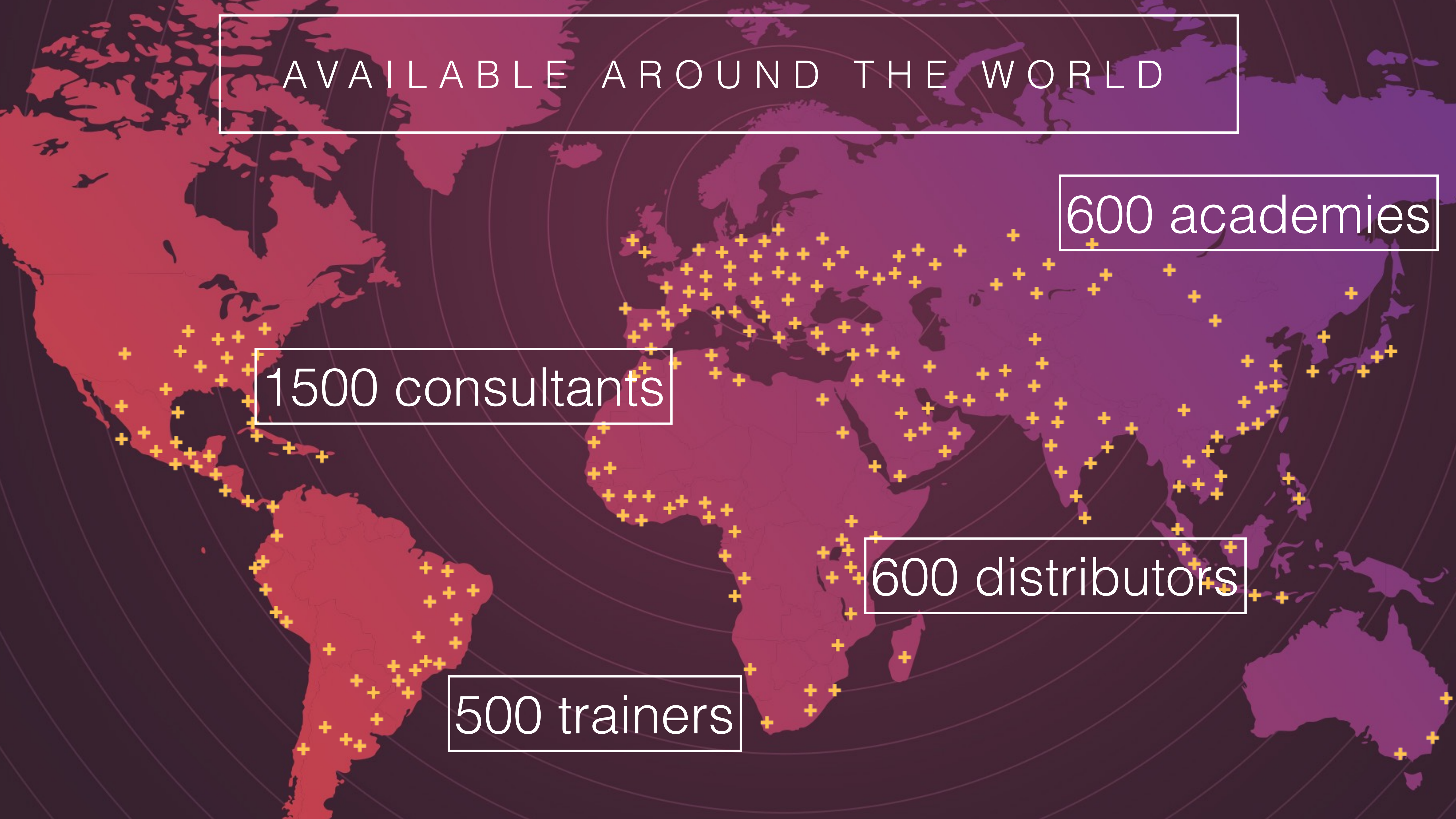
AVAILABLE AROUND THE WORLD

600 academies

1500 consultants

600 distributors

500 trainers



# MIKROTIK USER MEETING

A world map with a dark purple and red color scheme. Numerous orange hexagonal markers with white outlines are scattered across the map, representing the locations of Mikrotik User Meetings. The markers are most densely clustered in North America, Europe, and Asia, with fewer markers in South America, Africa, and Australia.

80+ countries

200 events

3500+  
participants



# MUM México 2019

- 4 staff members from MikroTik
- Arrange a business meeting at the registration desk
- 2 full days of presentations, see [mt.lv/agenda](https://mt.lv/agenda)
- Lunch with voucher
- 20 exhibitors
- WiFi: **MikroTikMUM**, password “**mikrotik2019**”



LIVESTREAM

**[youtube.com/mikrotik](https://www.youtube.com/mikrotik)**

SPECIAL THANKS



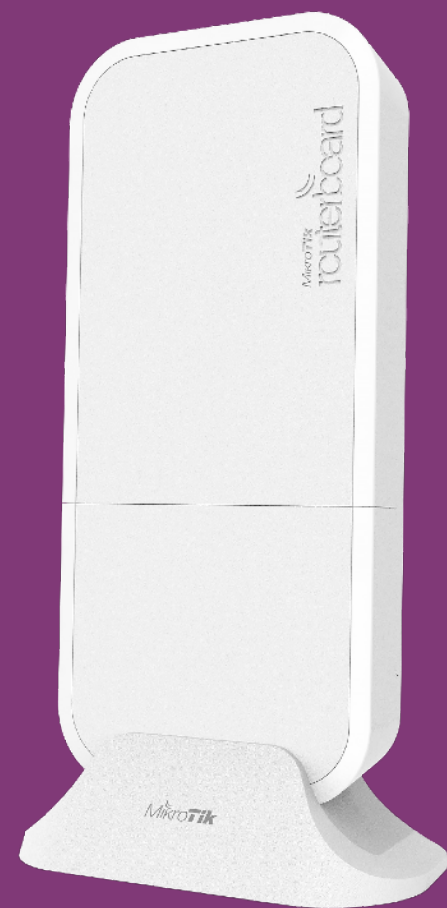
**INDEX**  
**SOLUCIONES IP**



RECENT PRODUCTS

# 60GHz device family

wAP60Gx3 AP



Wireless Wire Dish



SXTsq Lite60



LHG Lite60



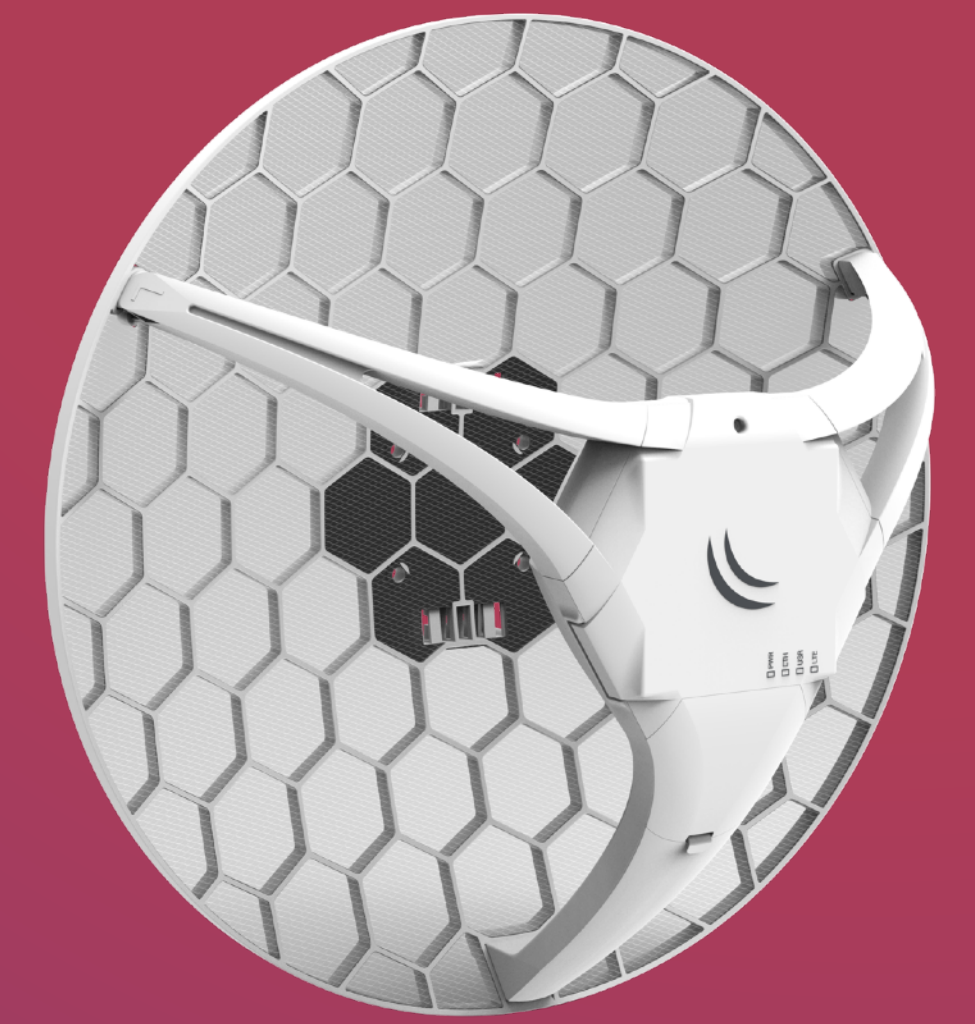
# 4G kits

LtAP mini

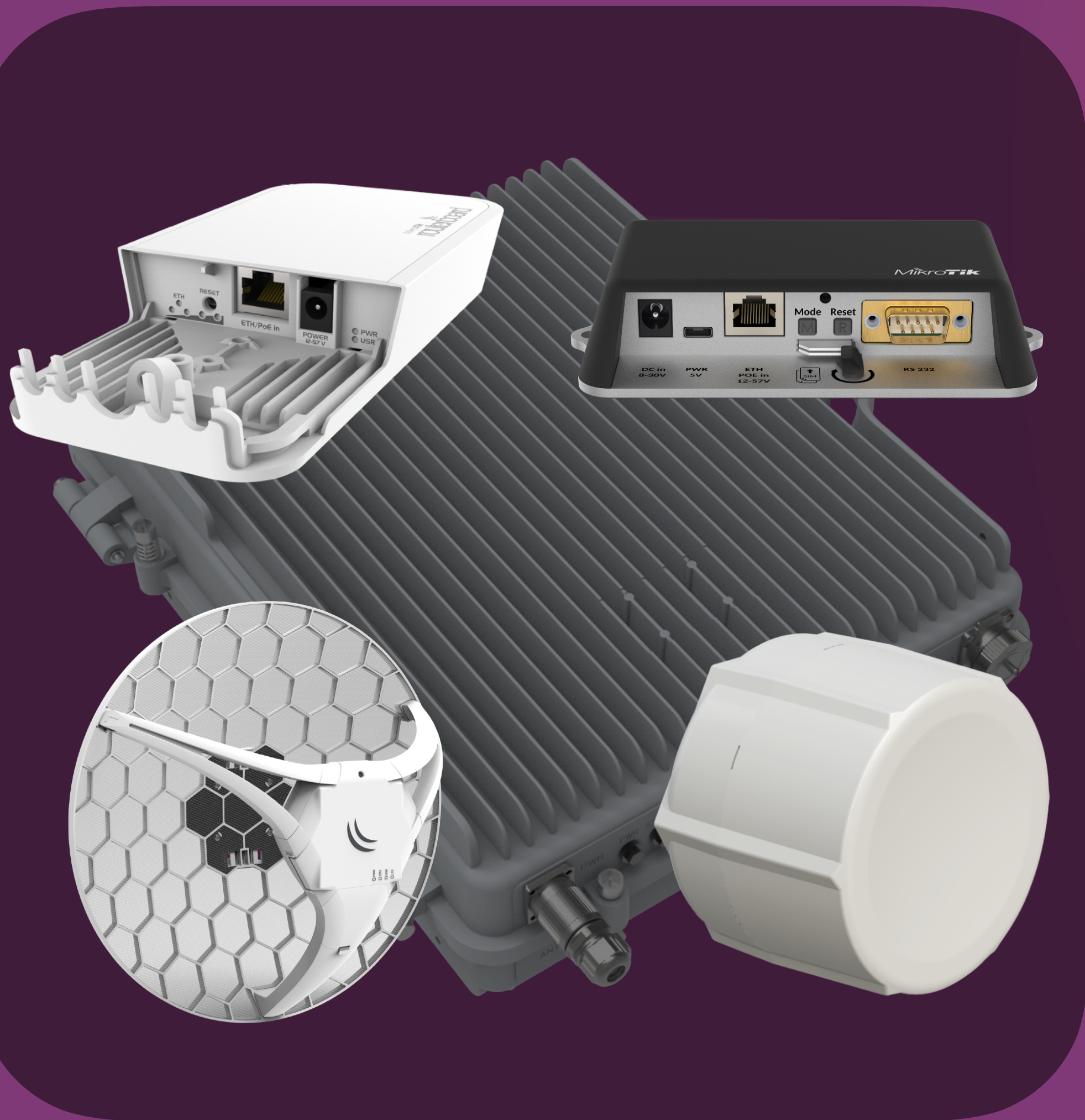
wAP

SXT

LHG



# InterCell - LTE base station



- LTE base station for WISPs or mobile operators
- LTE bands 38 and 39 (4 models)
- Up to 192 clients
- Can use together with MikroTik LTE CPE's

# RouterBOARD 4011





# RouterBOARD 4011

- 2 chains for 2 GHz, 802.11 b/g/n
- 4 chains for 5 GHz, 802.11 a/n/ac
- 160 MHz channel width
- 1733 Mbps + 300 Mbps data rates



# RouterBOARD 4011

- 4 Core Cortex A15 CPU
- 10 Gigabit SFP+
- IPsec hardware encryption
- 1 GB RAM
- PoE out



# RouterBOARD 4011

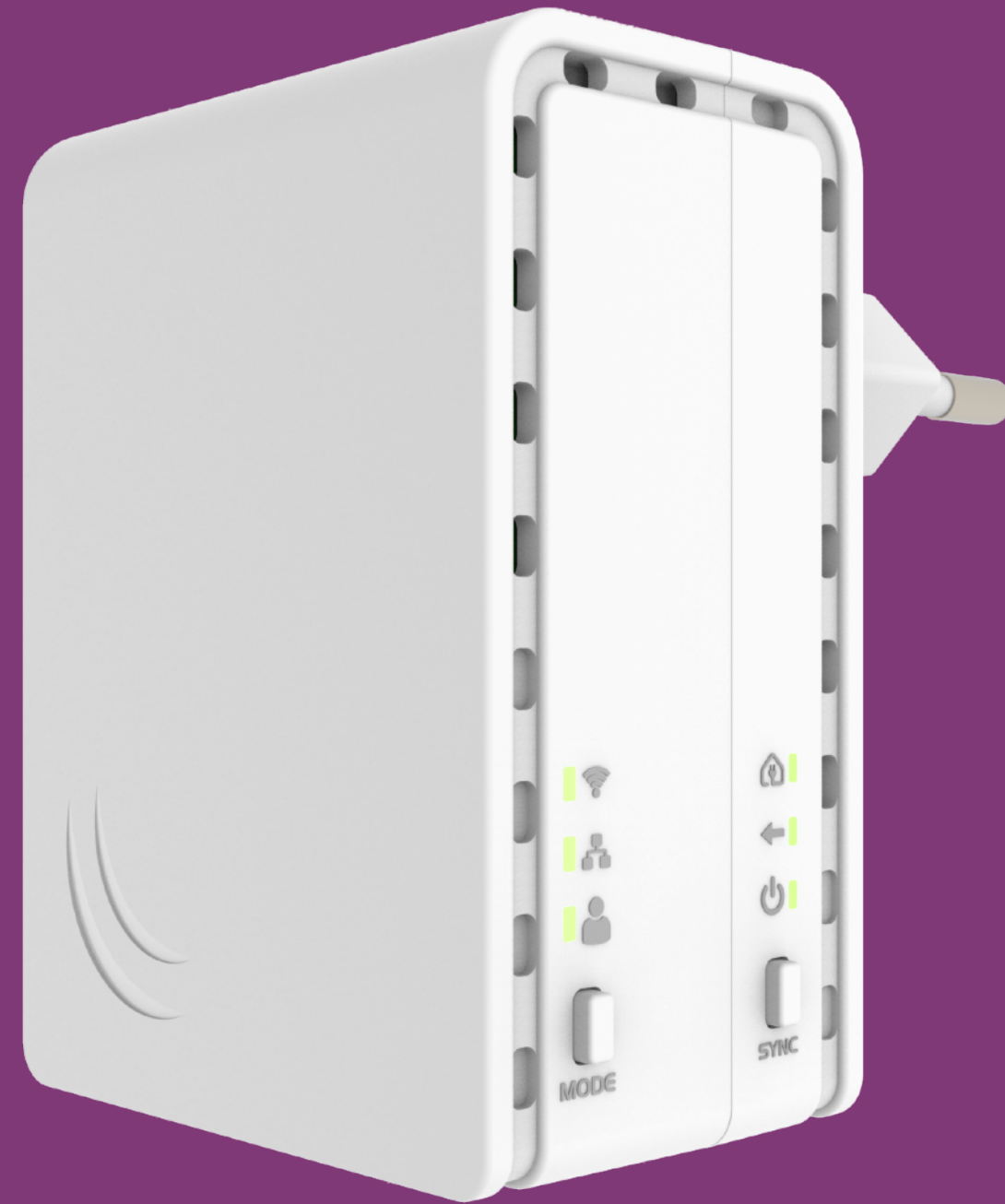


# PWR Line AP

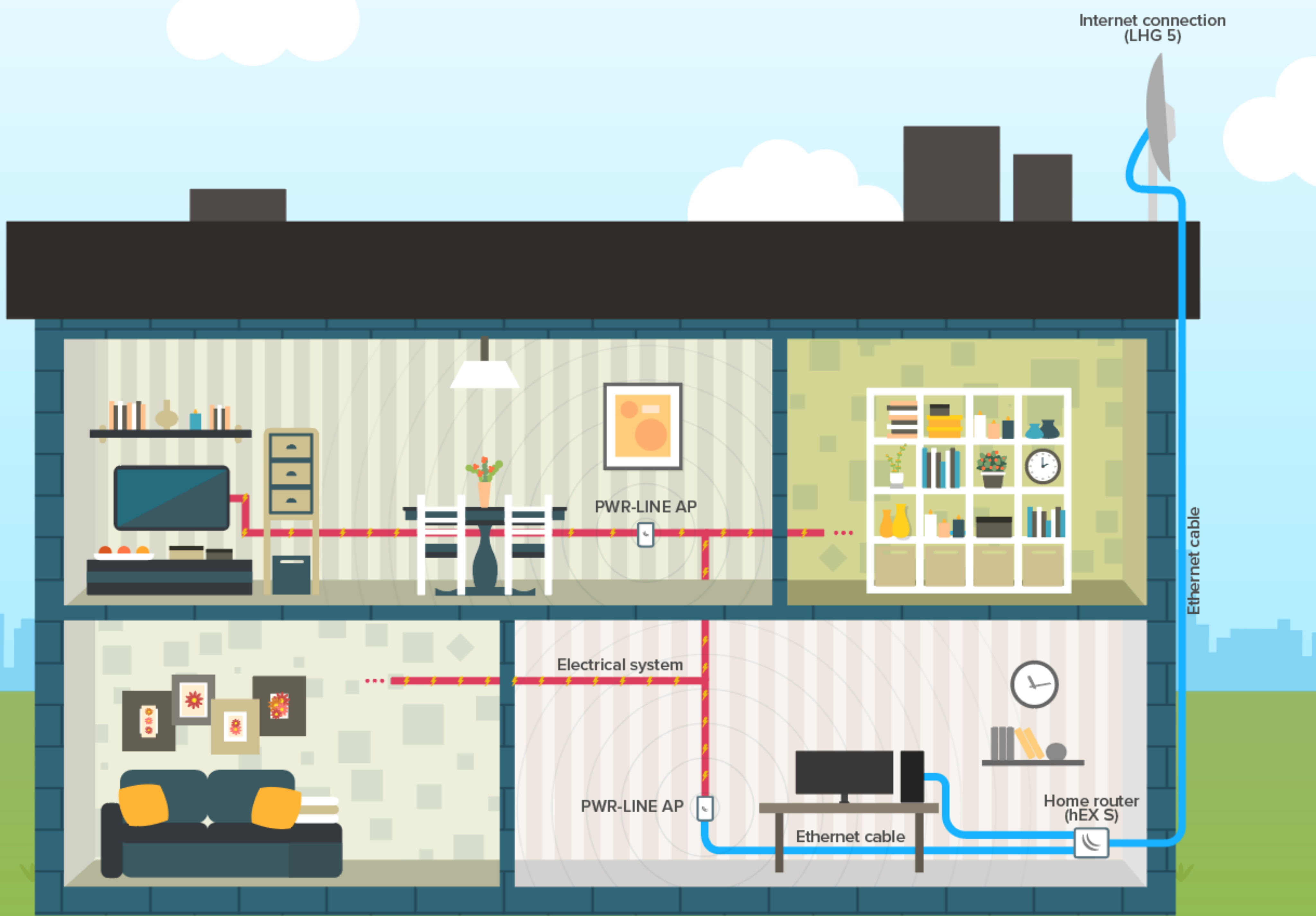


- Small AP that directly plugs into a socket
- Makes 100 Mbps links with others like it
- Build WiFi network without special cabling

# PWR Line AP



- Automatically pairs with new devices
- Uses HomePlug AV standard

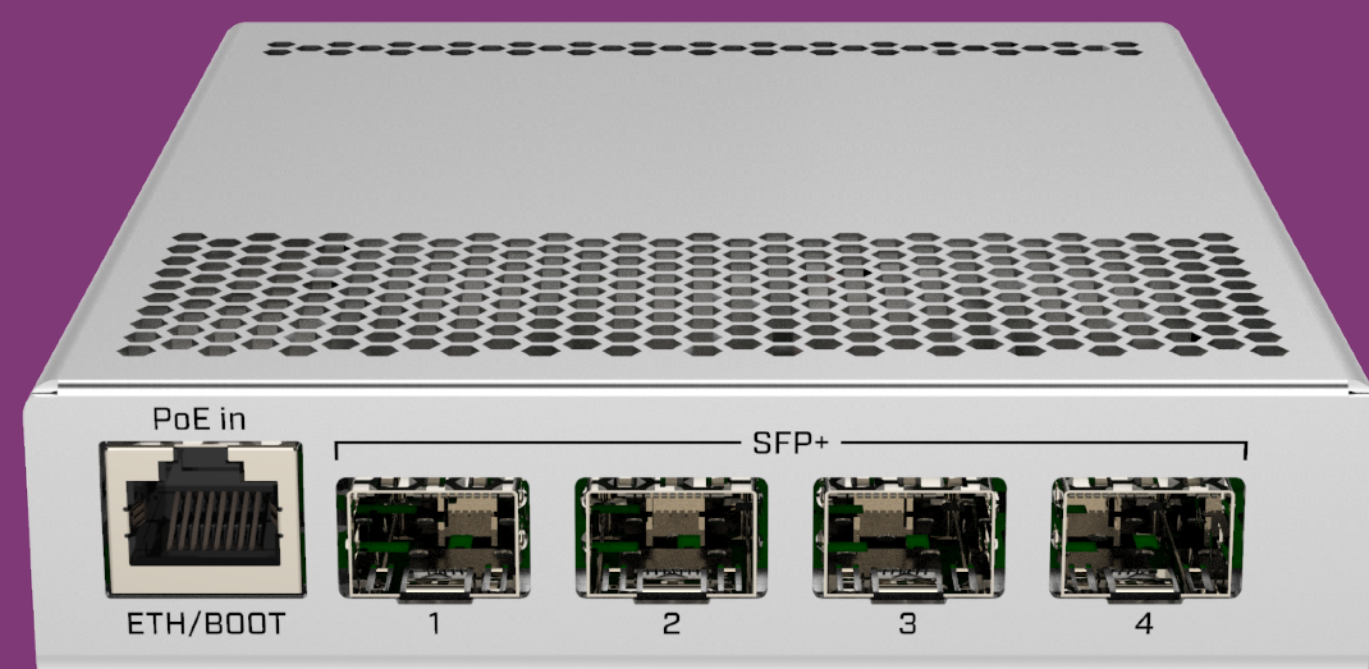


# PWR Line



- Adds PowerLine function via microUSB
- Supported by the new hAP lite & mini and mAP family devices
- Connect to PWR Line AP or other routers over the electrical line

# CRS305-1G-4S+IN



- 4x SFP+ ports
- 1x Gigabit Ethernet
- Dual boot: RouterOS / SwOS
- Metallic enclosure, silent
- Dual DC jacks



# CRS309-1G-8S+PC



- 8x SFP+ ports
- 1x Gigabit Ethernet
- Dual boot: RouterOS / SwOS
- Passive cooling case, silent
- Redundant power using PoE

# CCR1036 and CCR1016



- All CCR in these series now will have dual PSU for redundancy
- Full size USB port
- Improved PSU design. Optional 48 V PSU available separately
- CCR1036-8G-2S+; CCR1036-12G-4S;  
CCR1016-12G; CCR1016-12S-1S+

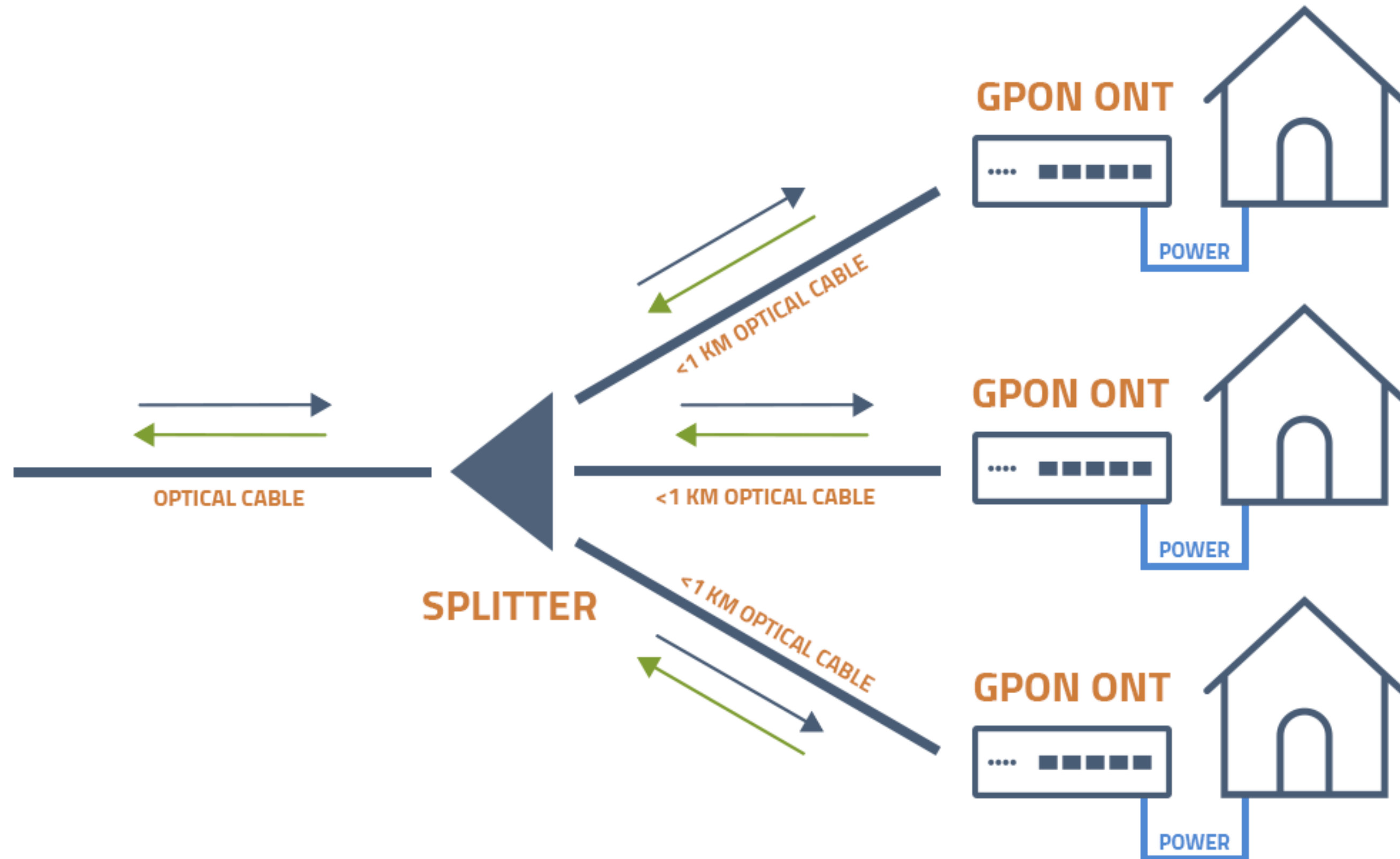
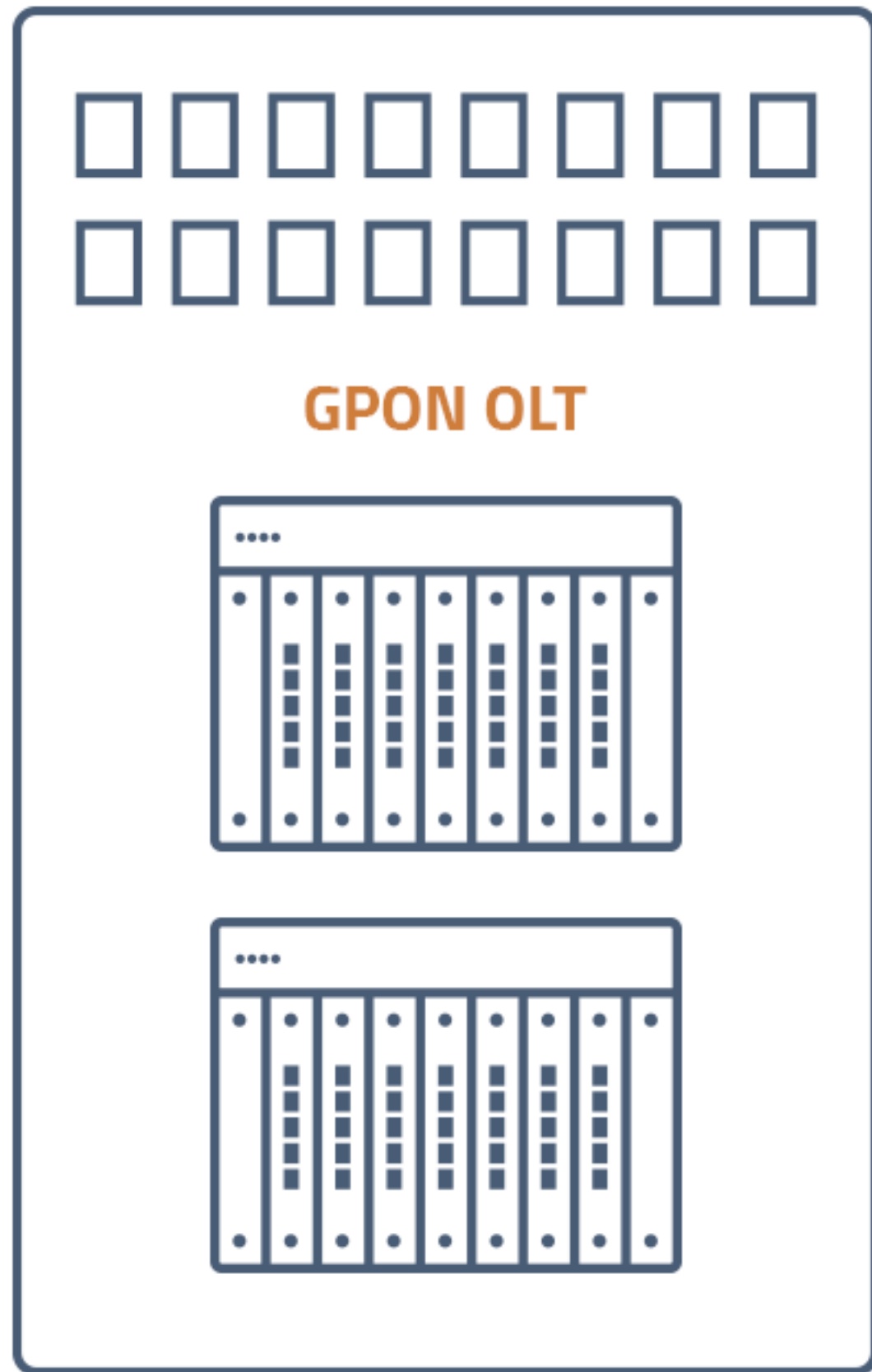


UPCOMING PRODUCTS

The background features a blurred image of network equipment. On the left, a black HAPS (Home Access Point System) device is visible, showing its ports and labels. In the center, a white network switch is partially visible. On the right, a white patch panel with multiple ports is shown. The entire scene is overlaid with a semi-transparent purple-to-pink gradient.

GPEN

## CENTRAL OFFICE



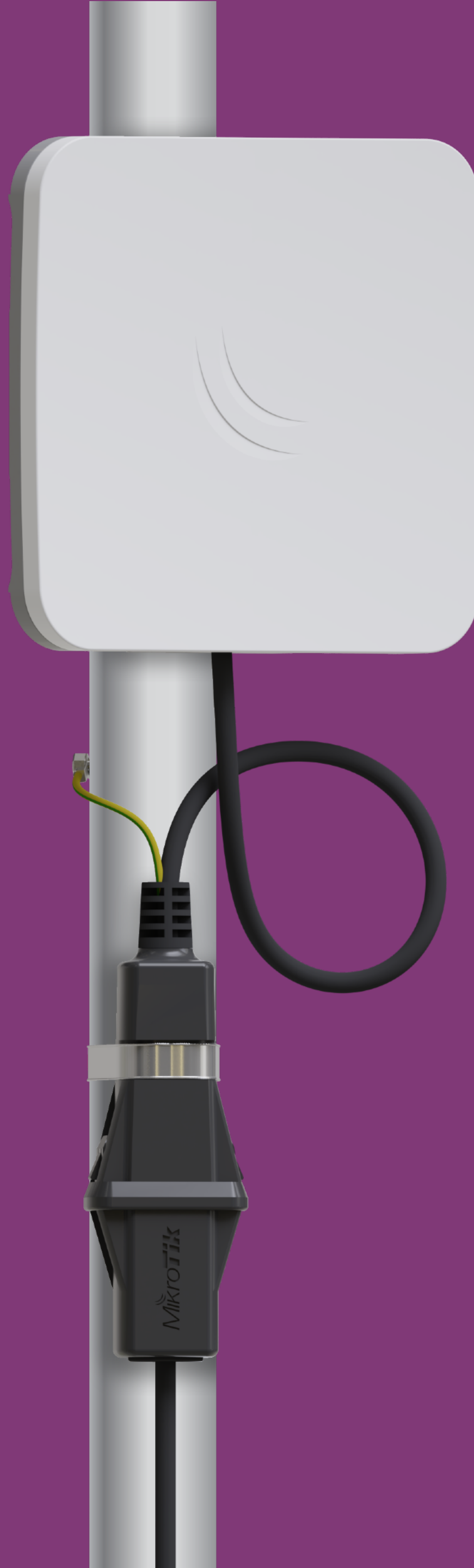
The background of the image shows a network switch and a patch panel. The switch is on the left, and the patch panel is on the right. The image is overlaid with a gradient from red on the left to purple on the right. A white rectangular box is centered horizontally, containing the text "GIGABIT PASSIVE ETHERNET NETWORK".

# GIGABIT PASSIVE ETHERNET NETWORK

# GPER



- Gigabit passive Ethernet repeater
- Ethernet extender (adds up to 210m) with PoE passthrough
- 24-57 V supported
- Voltage dropdown on 1.5km, (6x GPER) will be from 57 V to ~20 V



# GESP

- Gigabit Ethernet surge protector
- Up to 30 kV
- Tower, server room or both





# GPEN

- Gigabit passive Ethernet network
- GPEN11 - PoE injector, can be mounted securely
- GPEN21 - smart injector, also adds SFP for fiber to copper functionality



## CRS318

15x PoE in

1x PoE out

16x PoE out



## CSS610

7x PoE in

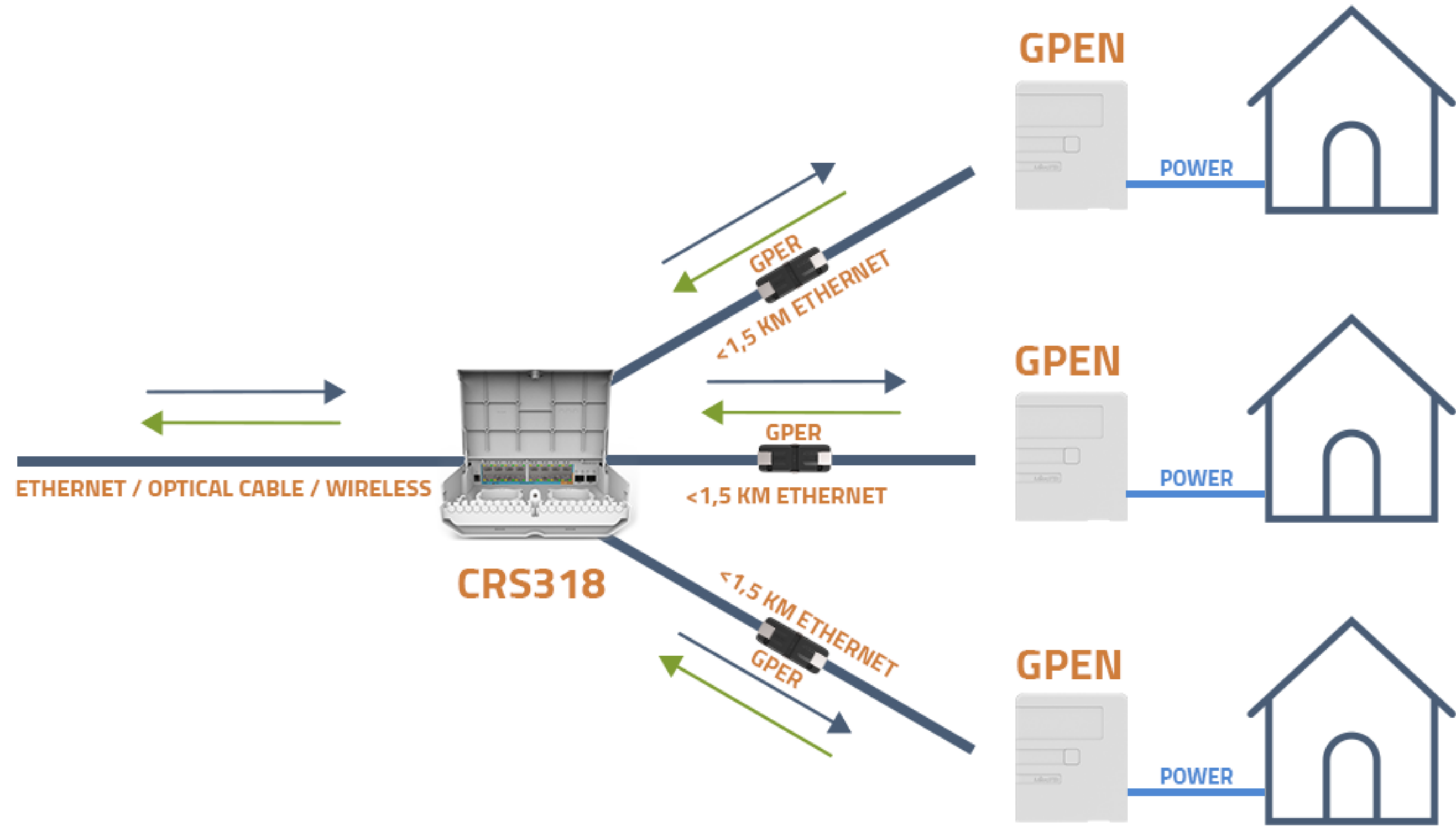
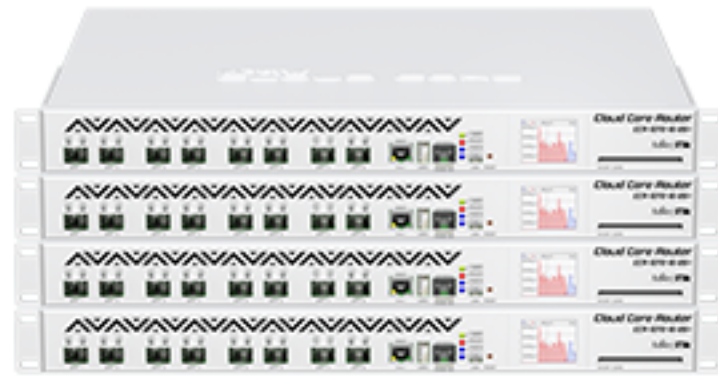
1x PoE out

8x PoE out

## CENTRAL OFFICE

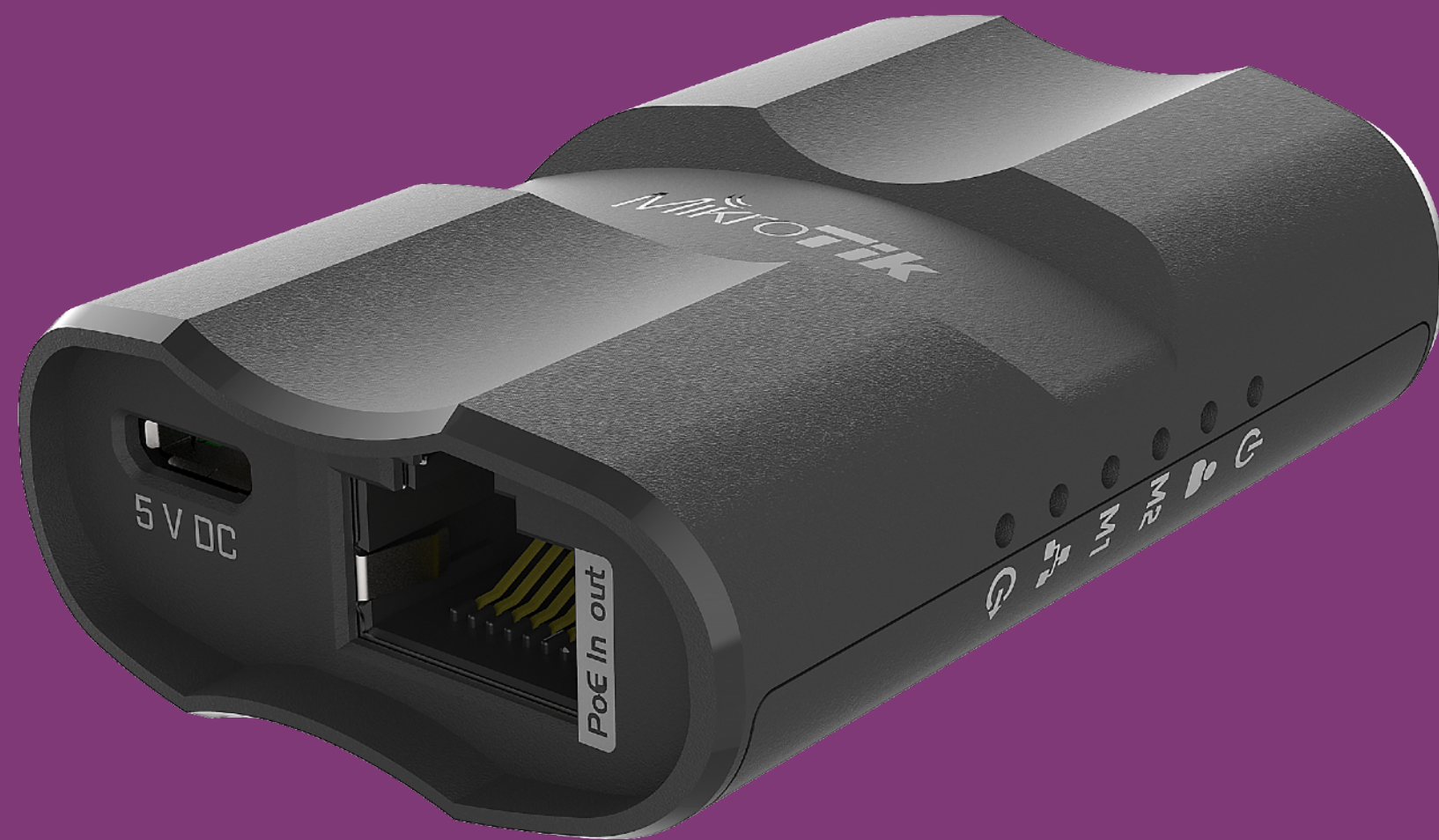


## REGULAR NETWORK



# MQS

- Mobile quick setup
- Administrators friend
- Manage Ethernet only devices from your phone over WiFi
- Can be powered from power bank
- Itself can power an SXT with PoE





# LoRa

- wAP 2 GHz AP with LoRa gateway
- UDP packet forwarder to any public or private network server
- Integrated 2.5 dBi antenna with external antenna support
- LoRa mPCIe Gateway module available

# mUPS pro



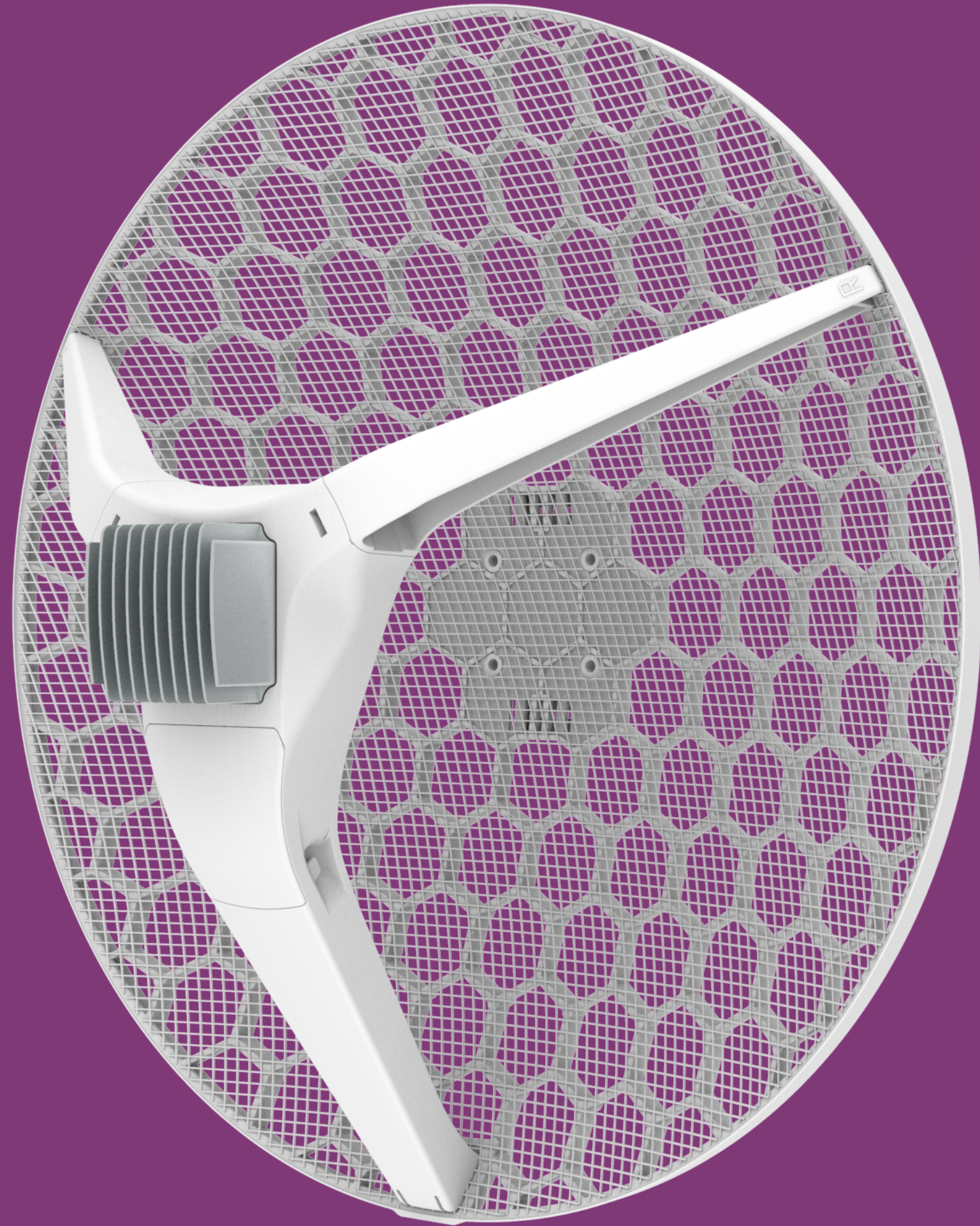
- Same form factor as mUPS
- 24 V/48 V battery support
- 24 V/48 V PoE out support
- Managed through web interface

# LtAP



- Still coming, soon, promise!
- Three SIM slots, two miniPCle
- GPS (GNSS), built-in WiFi, multiple power sources, USB, console, SMA connectors

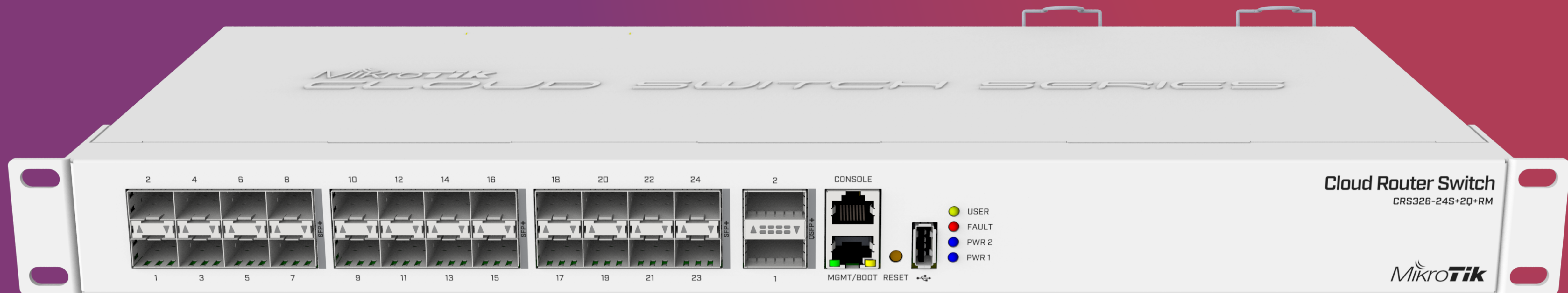
# LHG XL HP



- Simultaneous dual band router
- Gigabit Ethernet and SFP
- Use for failover or higher throughput
- High gain and output power

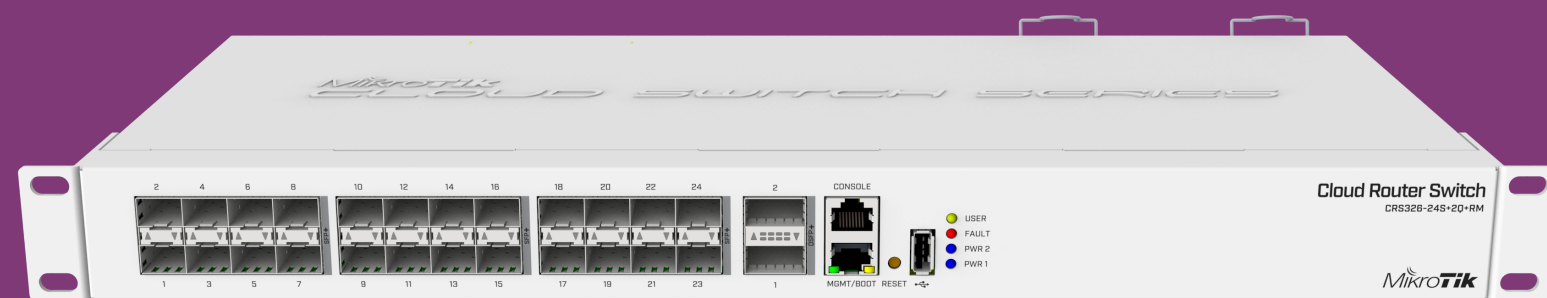


# CRS326-24S+2Q+



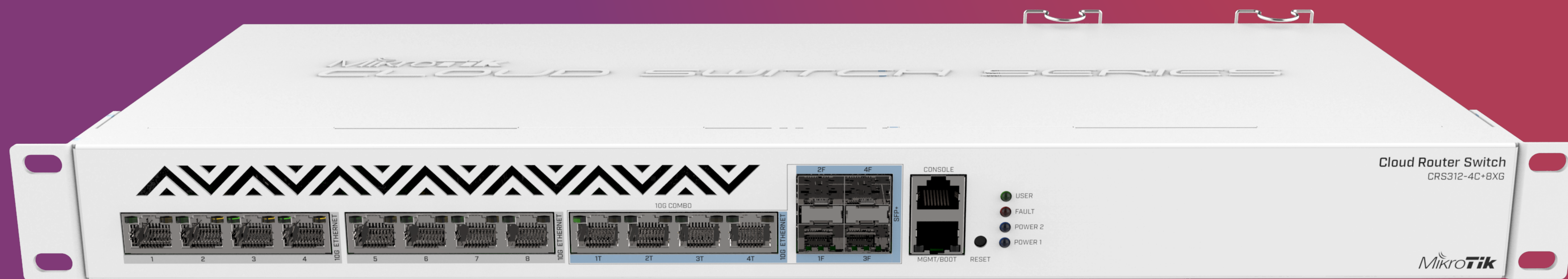
# CRS326-24S+2Q+

- 24x SFP+ (10G ports)
- 2x QSFP+ (40G ports)
- Previously announced as CRS332-32S+

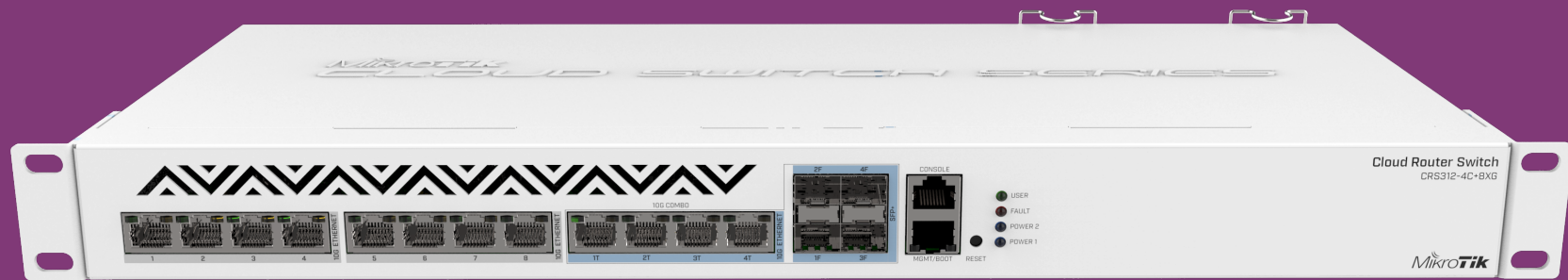


- Will be available in Q3 2019

# CRS312-4C+8XG

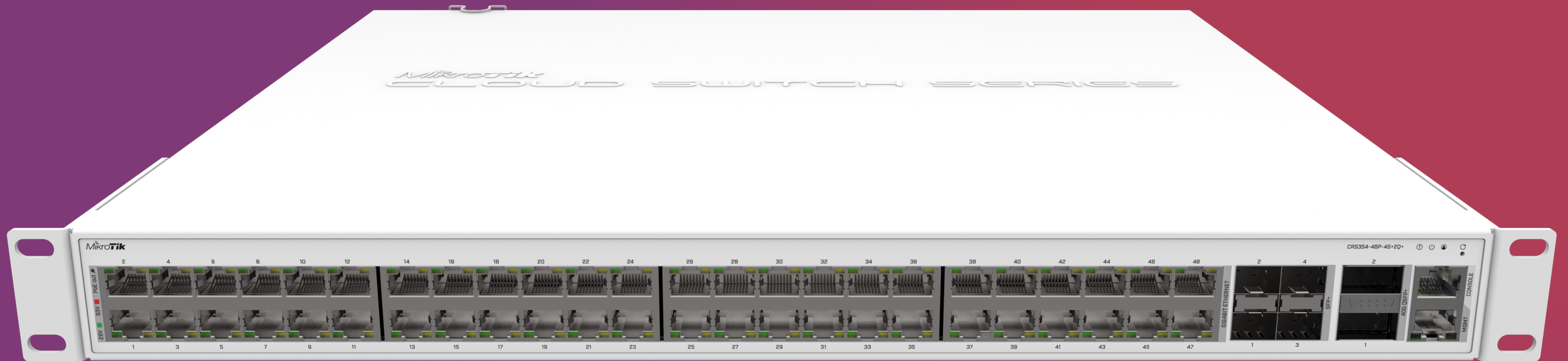


# CRS312-4C+8XG

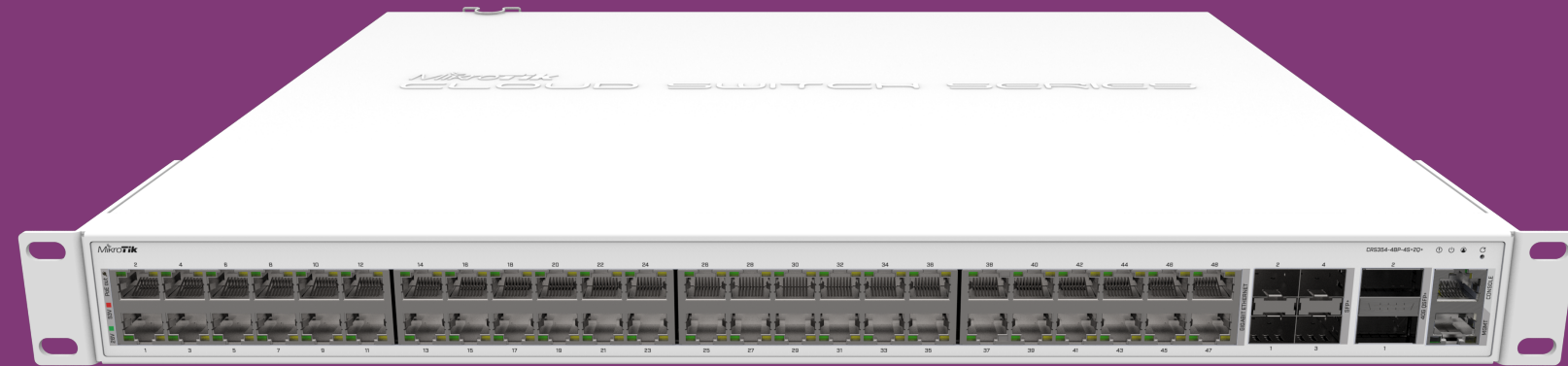


- 8x 10G Ethernet ports
- 4x 10G Ethernet / 10G SFP+ combo ports
- Console and management ports
- Dual PSU
- Will be available in Q2 2019

# CRS354-48G-4S+2Q+



# CRS354-48G-4S+2Q+

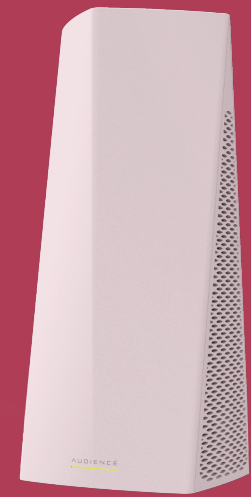


- 48x Gigabit ports
- 4x SFP+ ports
- 2x QSFP+ ports
- 48x PoE out port version
- Expected Q4 2019



AUDIENCÉ

AUDIENCÉ





# Audience

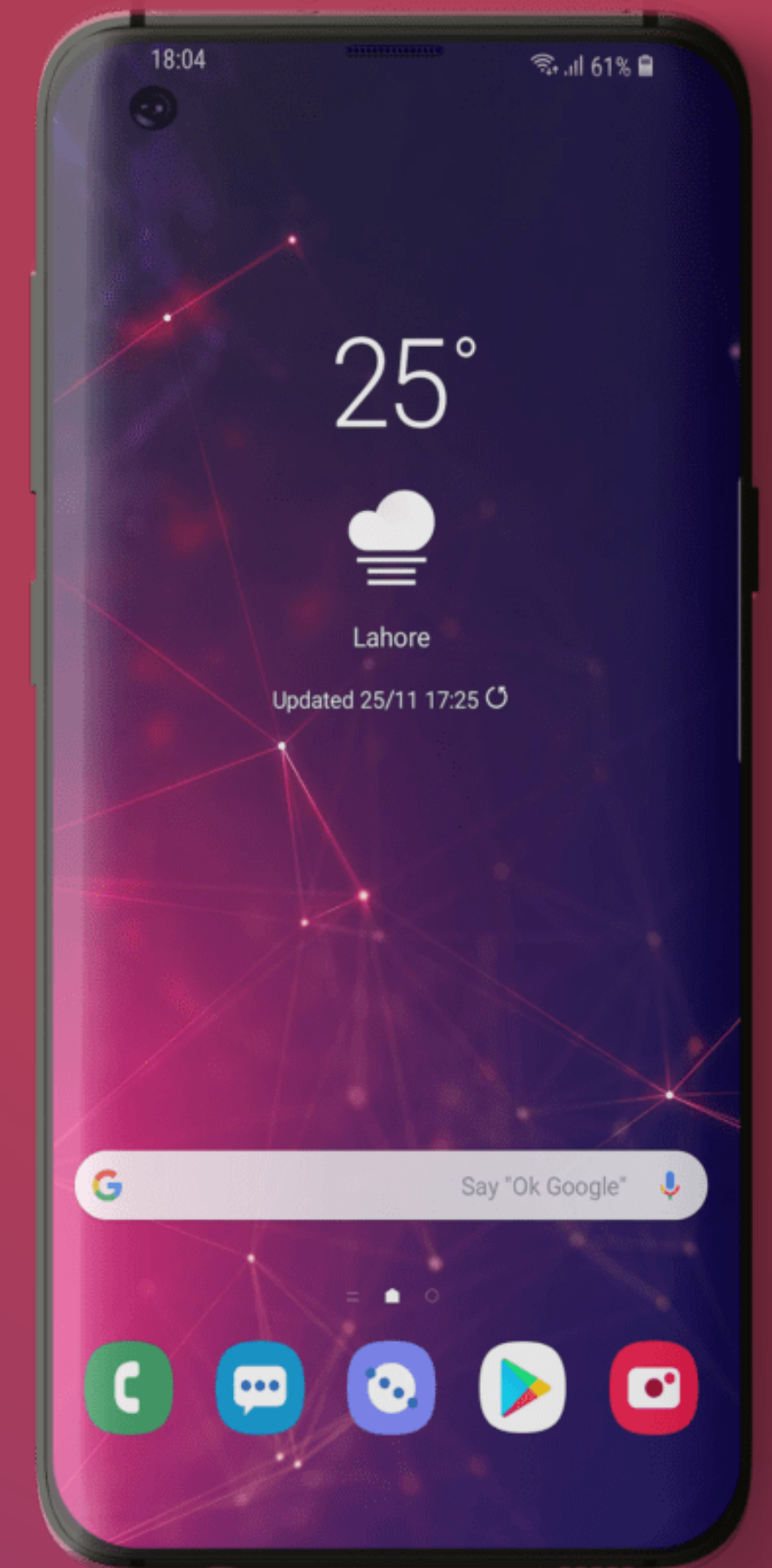
- Tri-band 802.11ac home AP with mesh function
- Secondary 5 GHz interface pairs with other units
- Two Ethernet ports
- LTE model with SIM slot and CAT6 modem



# MikroTik app for iOS / Android



Scan me



The image features a stylized world map in shades of red and purple, overlaid with a grid of latitude and longitude lines. In the center of the map, there is a small silhouette of a person riding a bicycle. The Microtik logo is prominently displayed in the center, consisting of a white crescent moon above the word "MIKROTIK" in a bold, white, sans-serif font. The letters "MIKRO" are in a regular weight, while "TIK" is in a significantly bolder weight.

*MIKROTIK*