



AUTO
POWER CYCLING A MODEM
WITH MIKROTIK

UN-ATTENDED MODEM REBOOT USING A MIKROTIK POE-OUT PORT

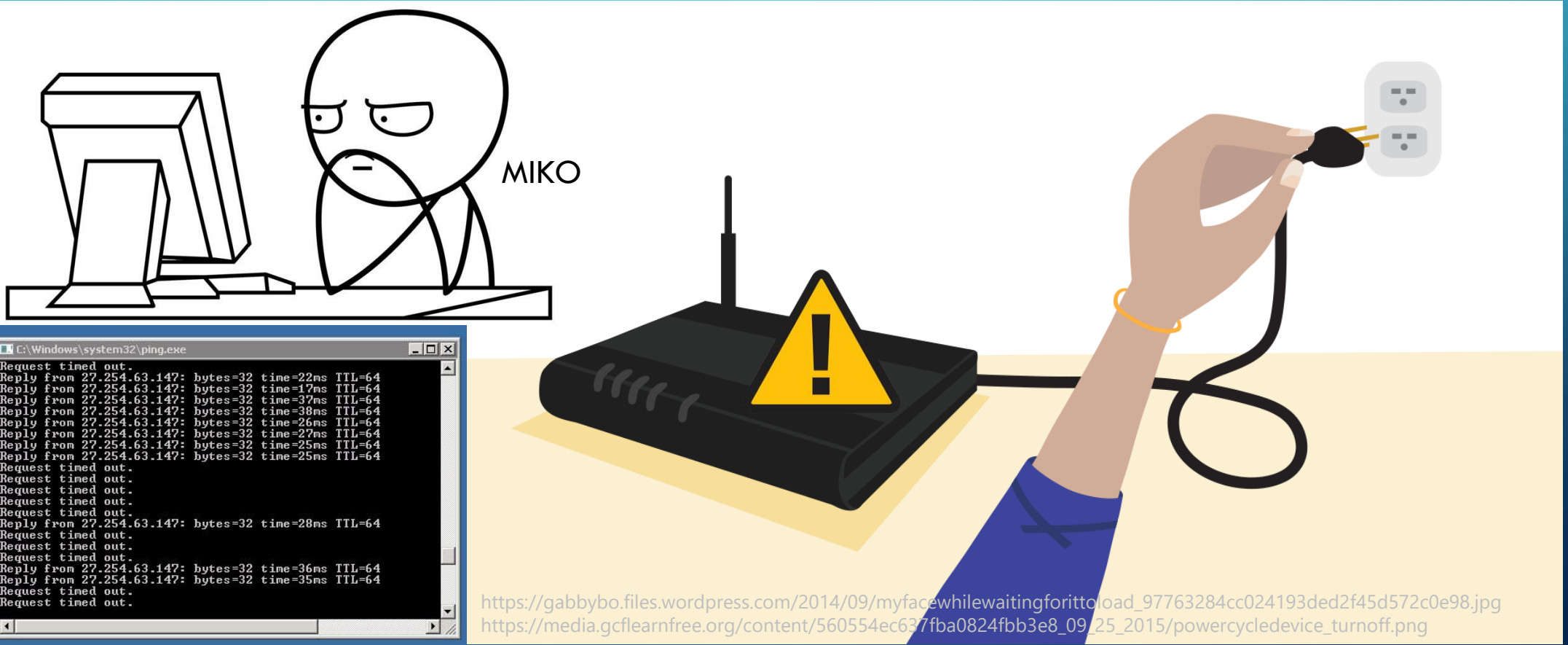
DISCLAIMER

- This presentation is for educational purpose only.
- The presenter do not assume any responsibility for the content and result of this presentation. Use this material at your own discretion.
- Some images are not mine and are credited to its respective owners. No copyright infringement intended.

PROBLEM



FAULTY DSL MODEM



EDANN BAULETE

CO-FOUNDER & PRESIDENT OF KOMSPEC TECHNOLOGIES



USING MIKROTIK SINCE 2013

 facebook.com/komspec

THE TEAM



SERVICES

WIRELESS DATA NETWORK

DATA & TRAFFIC MANAGEMENT

WEBDEV & HOSTING

CCTV & VOIP

TRAINING & SEMINARS

DATA CENTER SERVICES

KONNECT*ing*
THE FUTURE

KOMSPEC
TECHNOLOGIES



Philippine Sea

BUTUAN CITY

REGIONAL CENTER CARAGA REGION-13 **Mindanao**



PROBLEM



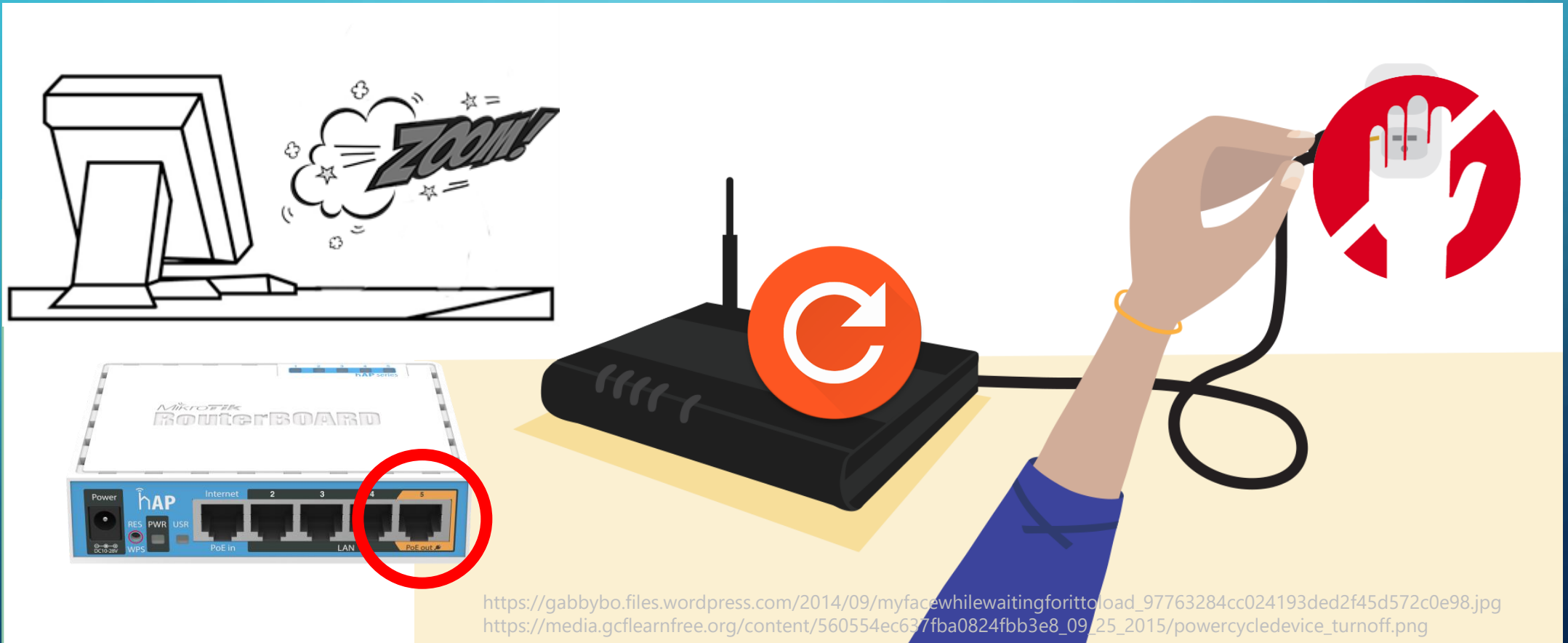
FAULTY DSL MODEM



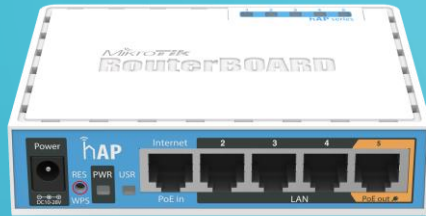
SOLUTION



AUTO REBOOT MODEM



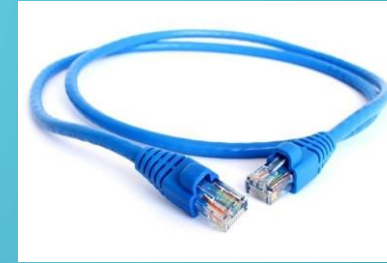
DEVICES & MATERIALS



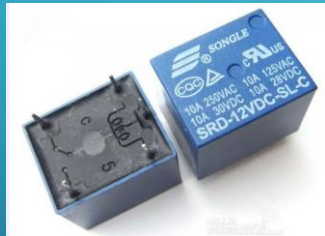
hAP AC Lite



DSL Modem



Patch Cables



Relay 12v



RJ45 IO Port



AC Male Plug

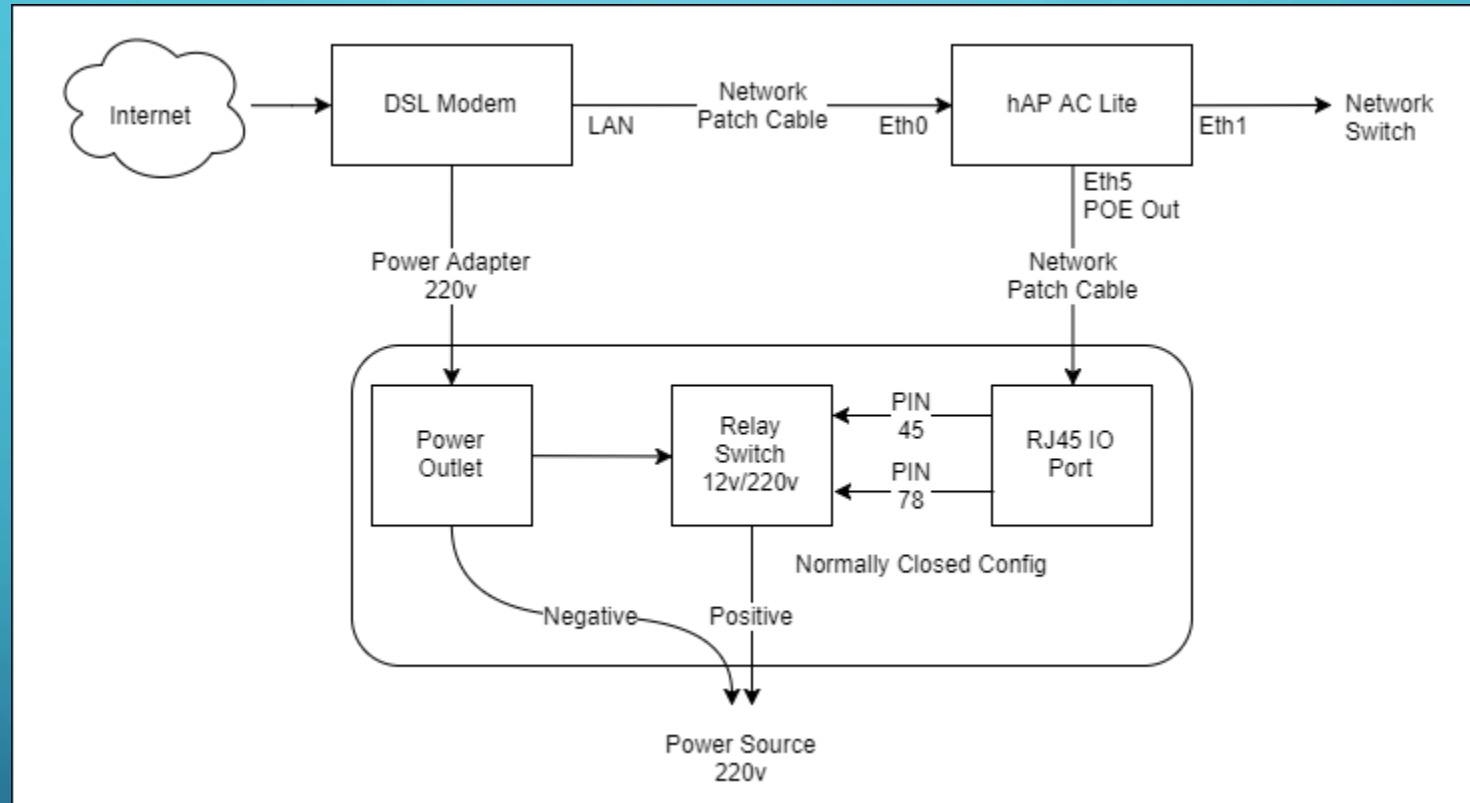


AC Female Outlet



Surface Box

DIAGRAM



When power is introduced to the POE Out on Eth5, the Relay Switch disconnects the positive line from the power source.

ACTUAL PHOTO





NETWATCH

Netwatch Host <8.8.8.8>

Host Up Down

Host:

Interval:

Timeout: ms

Status:

Since:

OK
Cancel
Apply
Disable
Comment
Copy
Remove

enabled

NETWATCH

Netwatch Host <8.8.8.8>

Host Up Down

On Down:

```
:local avgRtt 0
:local pout 0
:local pin 0
:local ploss 0

/tool flood-ping 8.8.8.8 count=10 do={
  if ($sent = 10) do={
    :set avgRtt "$avg-rtt"
    :set pout $sent
    :set pin $received
  }
}
:local ploss (100 - (($pin * 100) / $pout))
:local logmsg ("Ping Average for 8.8.8.8 - "[tostr $avgRtt]."ms - packet loss: "[tostr $ploss]."%")
:log info $logmsg

:log warning "Restarting PoE";

if ($ploss >= 50) do={
  if ([len [/system script job find where script="PowerCycle ( PoE)"]] > 0) do={
    :log warning "Another copy of monitoring script is running.. restarting the job.."
    /system script job remove numbers=[find script="PowerCycle ( PoE)"]
    :delay 2s
  } else={
    /system script run "PowerCycle ( PoE)"
  }
}
}
```

enabled

OK
Cancel
Apply
Disable
Comment
Copy
Remove

SCRIPT

Script <PowerCycle (PoE)>

Name:

Owner:

Policy: ftp reboot
 read write
 policy test
 password sniff
 sensitive romon
 dude

Last Time Started:

Run Count:

Source:

```
/log warning "Turning PoE to 'Forced On'"

local PoeOut [/interface ethernet poe get value-name=poe-out number=ether5]

if ($PoeOut != "forced-on") do={
    /interface ethernet poe set poe-out=forced-on numbers=ether5
    /log warning "Successfully Tuned on... waiting 5 seconds till tuning it 'Off'"
} else={
    /log warning "PoE is already on Forced-On... continuing to 5 seconds delay..."
}

/log warning "check delay"
:delay 5s
/log warning "check delay - end"

/log warning "Turning PoE to 'Off'"
/interface ethernet poe set poe-out=off numbers=ether5
/log warning "Success!... Script Exit"
```

Buttons: OK, Cancel, Apply, Comment, Copy, Remove, Run Script

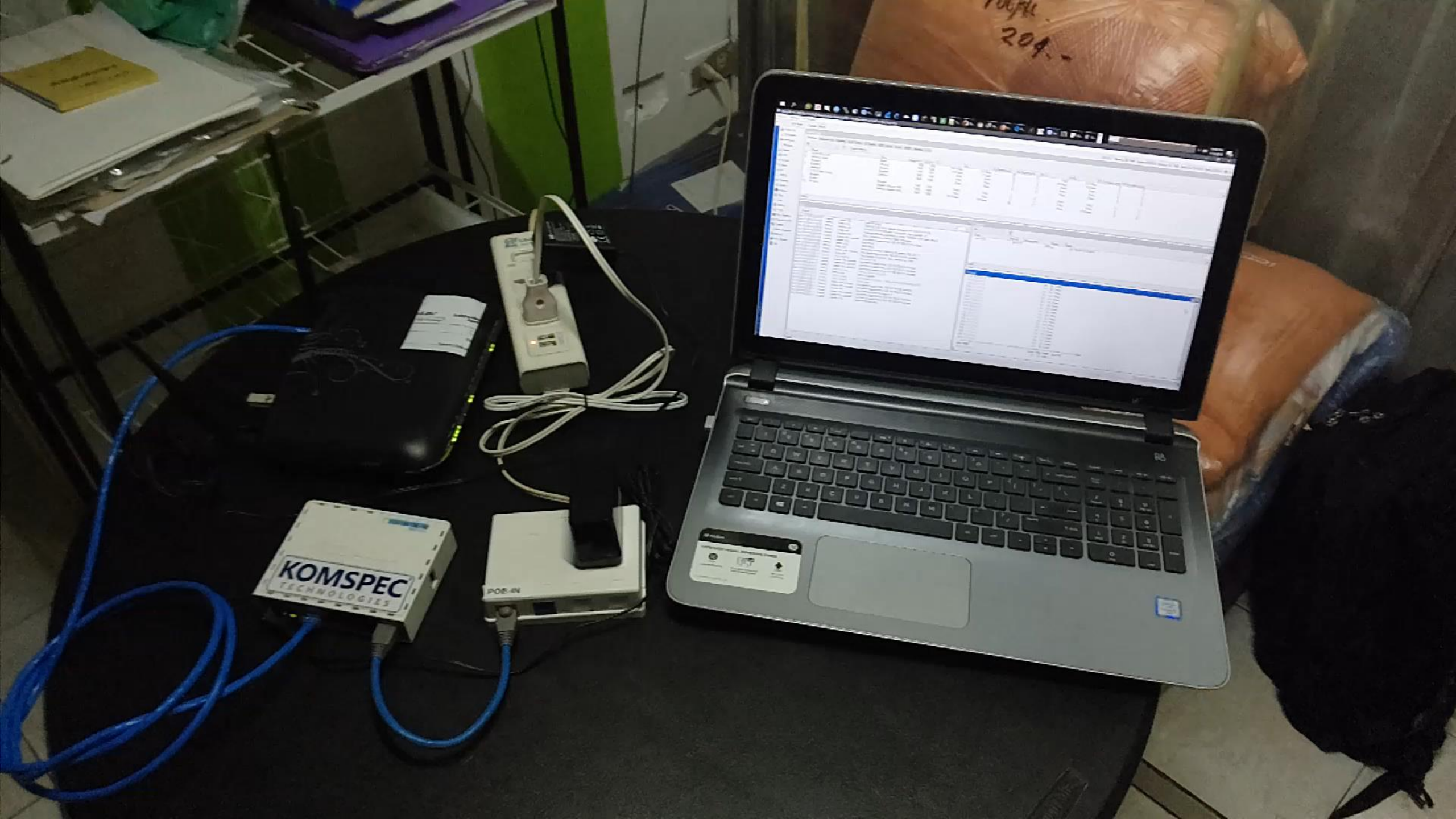
SCRIPT

```
/log warning "Turning PoE to 'Forced On'";
:local PoeOut [/interface ethernet poe get value-name=poe-out number=ether5];

:if ($PoeOut != "forced-on") do={
/interface ethernet poe set poe-out=forced-on numbers=ether5;
/log warning "Successfully Turned on... waiting 5 seconds till turning it 'Off'";
} else={
/log warning "PoE is already on Forced-On... continuing to 5 seconds delay...";
}

/log warning "check delay";
:delay 5s;
/log warning "check delay - end";

/log warning "Turning PoE to 'Off'";
/interface ethernet poe set poe-out=off numbers=ether5;
/log warning "Success!... Script Exit";
```

10/24/11
204--

IP	MAC	Vendor	Port	Role
10.10.10.1	080042400000	H3C	1/24	to core
10.10.10.2	080042400001	H3C	1/24	to core
10.10.10.3	080042400002	H3C	1/24	to core
10.10.10.4	080042400003	H3C	1/24	to core
10.10.10.5	080042400004	H3C	1/24	to core
10.10.10.6	080042400005	H3C	1/24	to core
10.10.10.7	080042400006	H3C	1/24	to core
10.10.10.8	080042400007	H3C	1/24	to core
10.10.10.9	080042400008	H3C	1/24	to core
10.10.10.10	080042400009	H3C	1/24	to core
10.10.10.11	08004240000A	H3C	1/24	to core
10.10.10.12	08004240000B	H3C	1/24	to core
10.10.10.13	08004240000C	H3C	1/24	to core
10.10.10.14	08004240000D	H3C	1/24	to core
10.10.10.15	08004240000E	H3C	1/24	to core
10.10.10.16	08004240000F	H3C	1/24	to core
10.10.10.17	080042400010	H3C	1/24	to core
10.10.10.18	080042400011	H3C	1/24	to core
10.10.10.19	080042400012	H3C	1/24	to core
10.10.10.20	080042400013	H3C	1/24	to core
10.10.10.21	080042400014	H3C	1/24	to core
10.10.10.22	080042400015	H3C	1/24	to core
10.10.10.23	080042400016	H3C	1/24	to core
10.10.10.24	080042400017	H3C	1/24	to core
10.10.10.25	080042400018	H3C	1/24	to core
10.10.10.26	080042400019	H3C	1/24	to core
10.10.10.27	08004240001A	H3C	1/24	to core
10.10.10.28	08004240001B	H3C	1/24	to core
10.10.10.29	08004240001C	H3C	1/24	to core
10.10.10.30	08004240001D	H3C	1/24	to core
10.10.10.31	08004240001E	H3C	1/24	to core

KOMSPEC
TECHNOLOGIES

POE-IN

THANK YOU

ENJOY THE REST OF MUM PH 2018



USING MIKROTIK SINCE 2013

 facebook.com/komspec