

The logo for MikroTik, featuring the word "Mikro" in a white, italicized serif font, followed by a stylized white arc above the letter 'o'. The word "Tik" is in a white, bold, italicized sans-serif font. The background is a blurred office interior with a red-to-purple gradient overlay.

Mikro **Tik**

USA

APRIL 2019



WHAT DO WE DO?

The background features a blurred image of various network hardware components, including a black HAPs (Home Access Point) device on the left, a white patch panel in the center, and several white network switches on the right. The entire scene is overlaid with a semi-transparent purple-to-pink gradient. A white rectangular border frames the central text.

WE MAKE SOFTWARE AND HARDWARE

MORE THAN 200 PRODUCTS



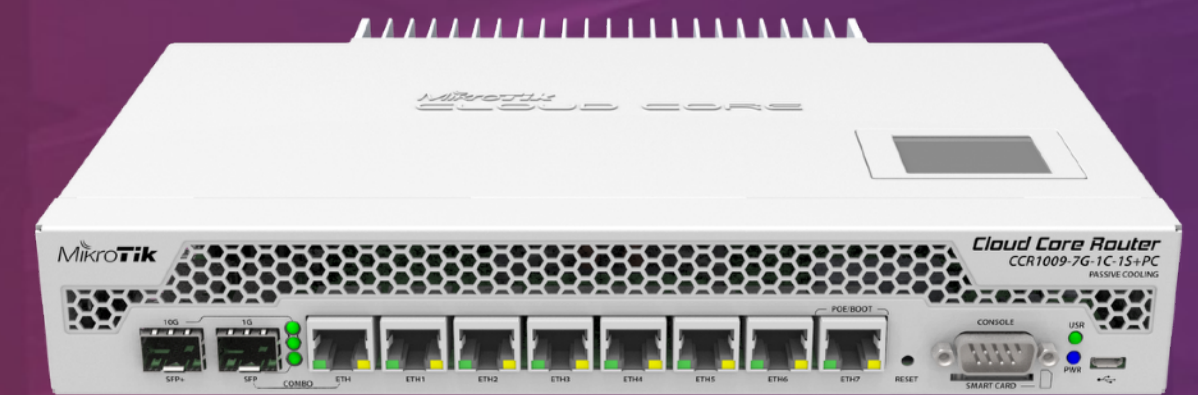
HOME



OUTDOOR



SOHO



CARRIER



LATVIA

MikroTik

- Established in 1996
- RouterOS created in 1997
- RouterBOARD created in 2002

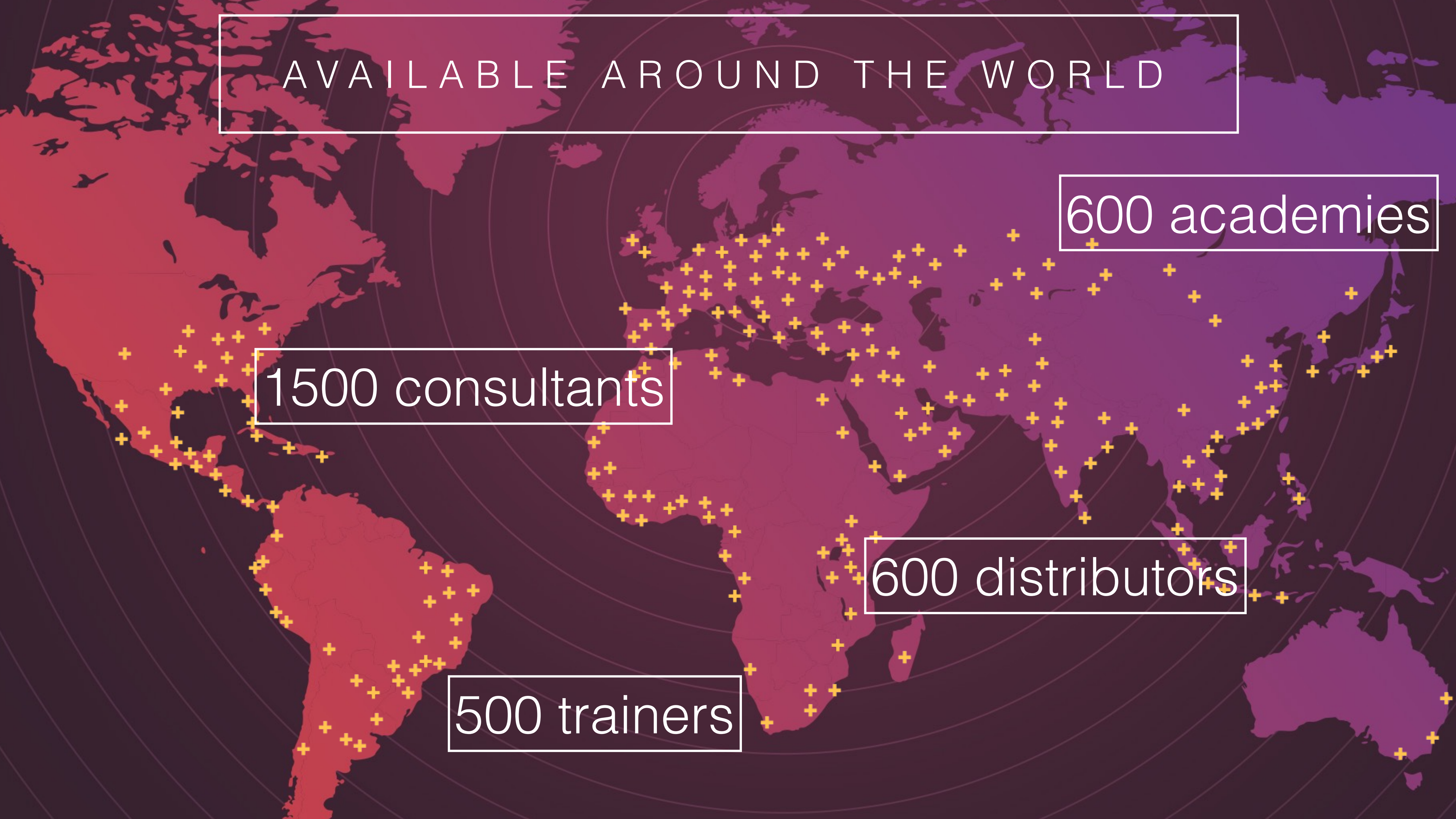
AVAILABLE AROUND THE WORLD

600 academies

1500 consultants

600 distributors

500 trainers



MIKROTIK USER MEETING

A world map with a dark purple and red color scheme. Numerous orange hexagonal markers with white outlines are scattered across the map, representing the locations of Mikrotik User Meetings. The markers are most densely clustered in North America, Europe, and Asia, with fewer markers in South America, Africa, and Australia.

80+ countries

200 events

3500+
participants

MUM USA 2019

- 5 staff members from MikroTik
- Arrange a business meeting at the registration desk
- 2 full days of presentations, see mt.lv/agenda
- Lunch with voucher
- 24 exhibitors
- WiFi: **MUM**, password “**mikrotik**”

LIVESTREAM

[youtube.com/mikrotik](https://www.youtube.com/mikrotik)

SPECIAL THANKS

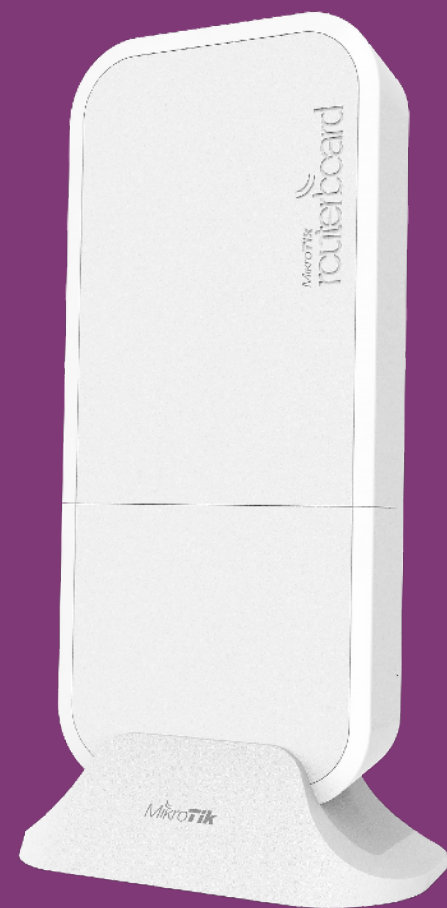




RECENT PRODUCTS

60GHz device family

wAP60Gx3 AP



Wireless Wire Dish



SXTsq Lite60



LHG Lite60



4G kits

LtAP mini

wAP

SXT

LHG



InterCell - LTE base station



- LTE base station for WISPs or mobile operators
- LTE bands 38 and 39 (4 models)
- Up to 192 clients
- Can use together with MikroTik LTE CPE's

RouterBOARD 4011



RouterBOARD 4011

- 2 chains for 2 GHz, 802.11 b/g/n
- 4 chains for 5 GHz, 802.11 a/n/ac
- 160 MHz channel width
- 1733 Mbps + 300 Mbps data rates



RouterBOARD 4011

- 4 Core Cortex A15 CPU
- 10 Gigabit SFP+
- IPsec hardware encryption
- 1 GB RAM
- PoE out



RouterBOARD 4011

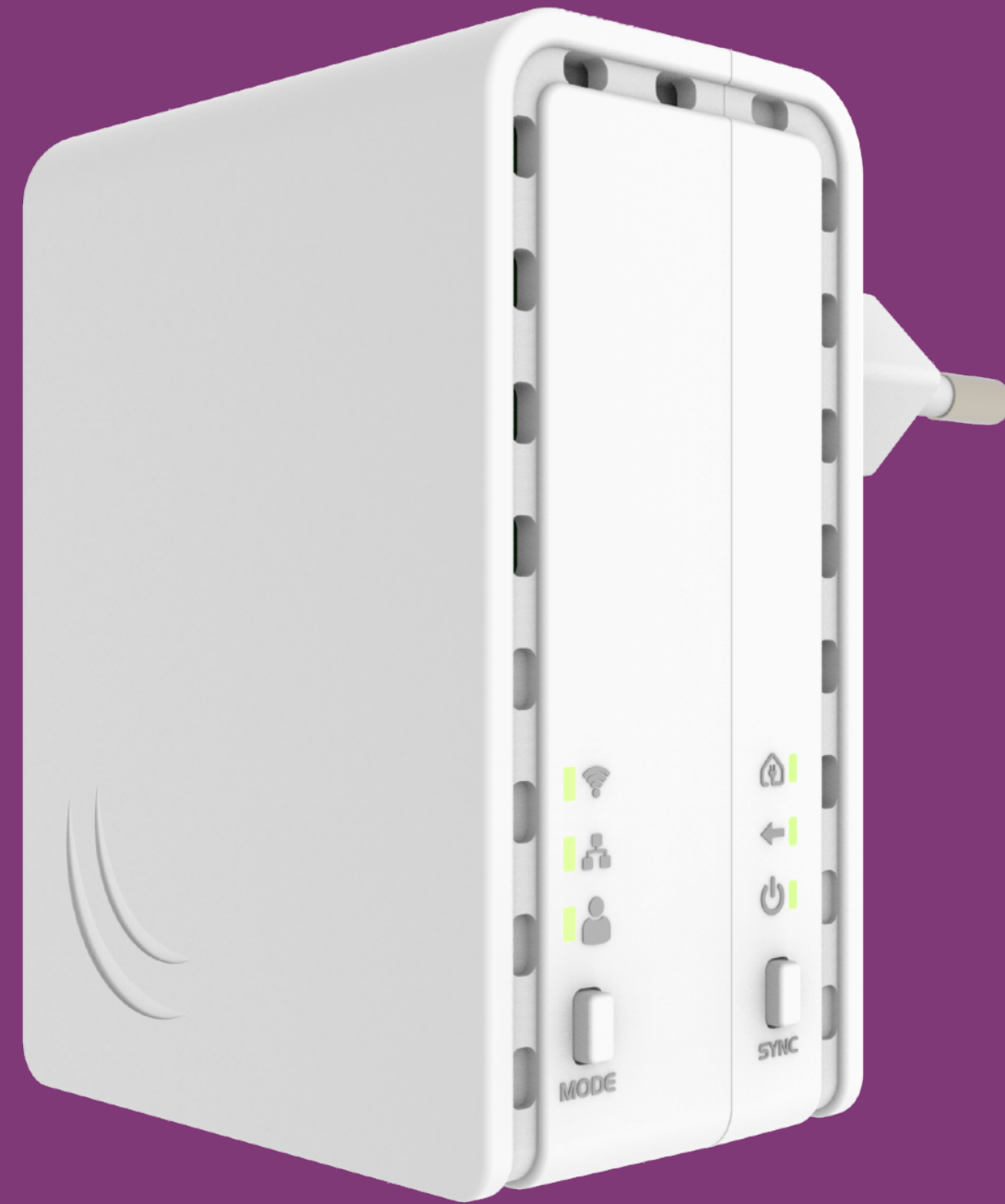


PWR Line AP

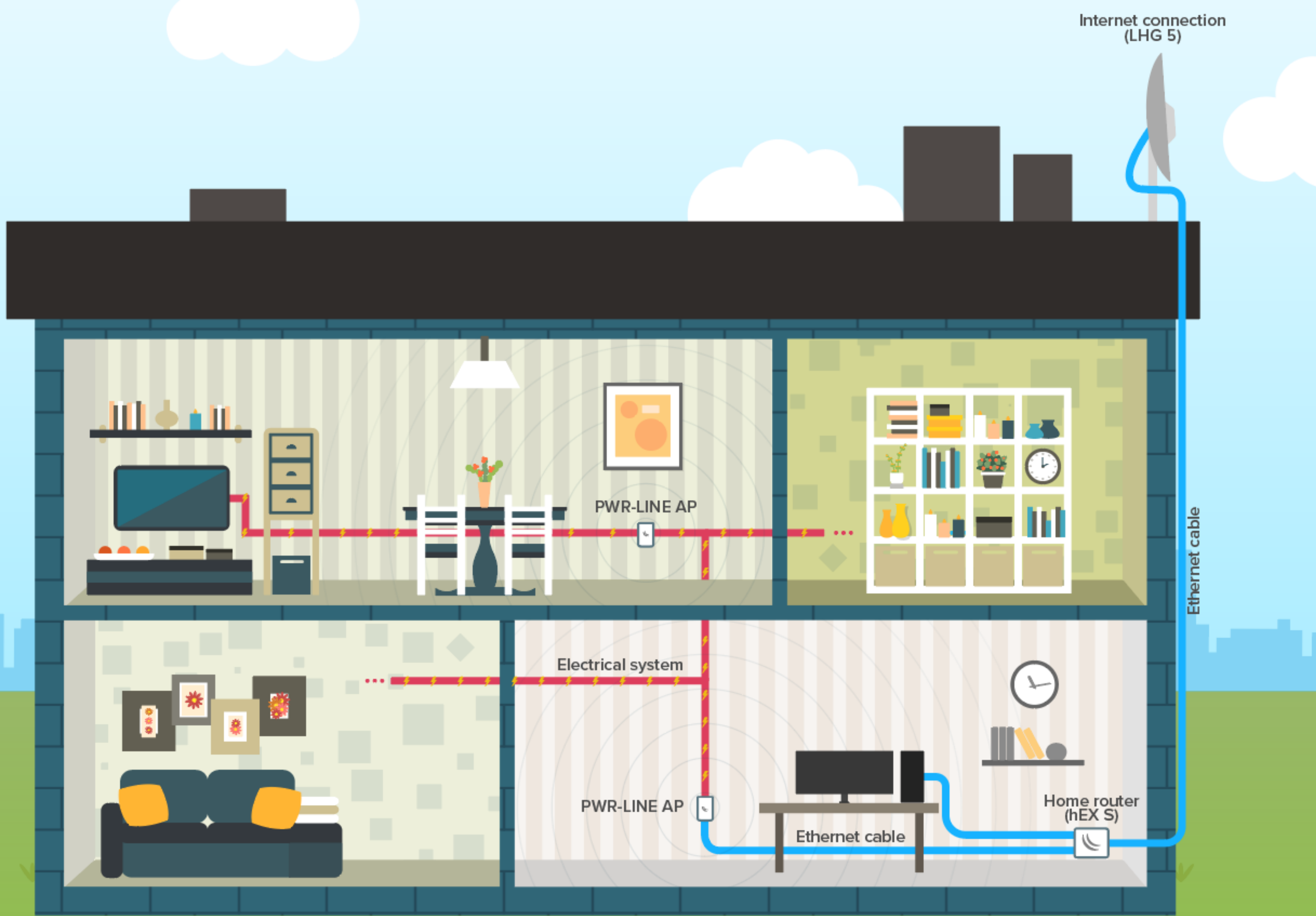


- Small AP that directly plugs into a socket
- Makes 100 Mbps links with others like it
- Build WiFi network without special cabling

PWR Line AP



- Automatically pairs with new devices
- Uses HomePlug AV standard

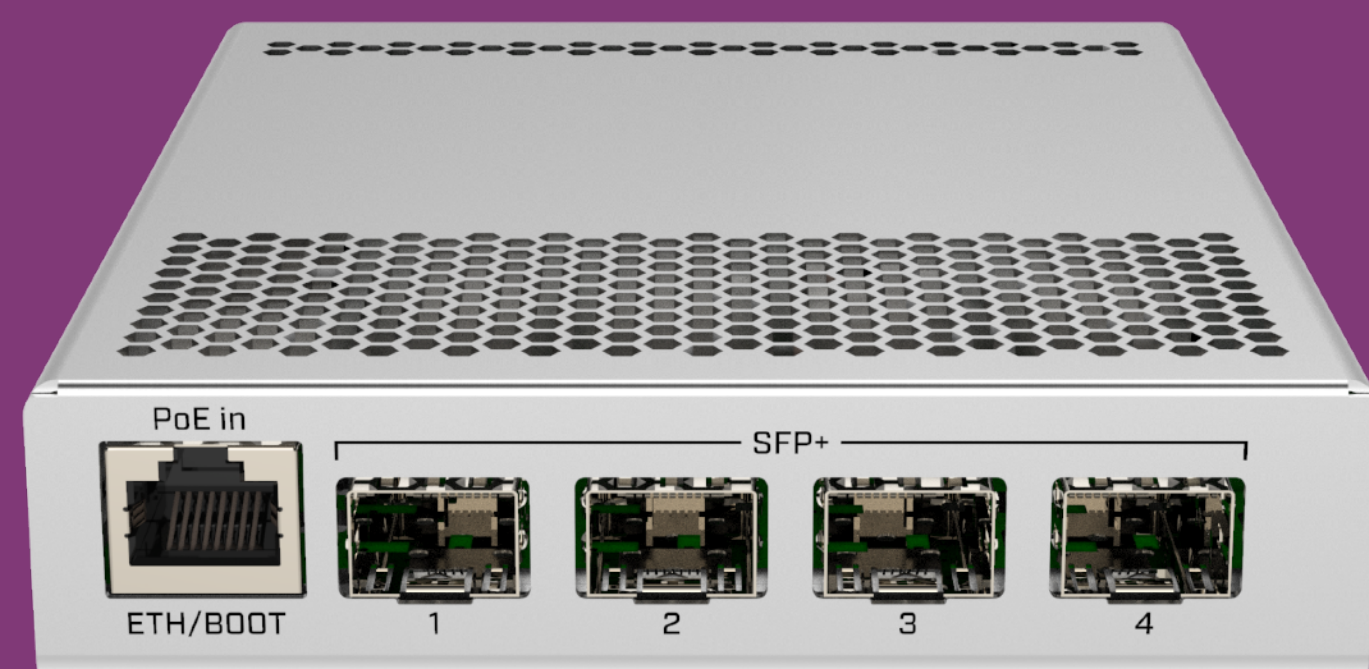


PWR Line



- Adds PowerLine function via microUSB
- Supported by the new hAP lite & mini and mAP family devices
- Connect to PWR Line AP or other routers over the electrical line

CRS305-1G-4S+IN



- 4x SFP+ ports
- 1x Gigabit Ethernet
- Dual boot: RouterOS / SwOS
- Metallic enclosure, silent
- Dual DC jacks

CRS309-1G-8S+PC



- 8x SFP+ ports
- 1x Gigabit Ethernet
- Dual boot: RouterOS / SwOS
- Passive cooling case, silent
- Redundant power using PoE

CCR1036 and CCR1016



- All CCR in these series now will have dual PSU for redundancy
- Full size USB port
- Improved PSU design. Optional 48 V PSU available separately
- CCR1036-8G-2S+; CCR1036-12G-4S;
CCR1016-12G; CCR1016-12S-1S+

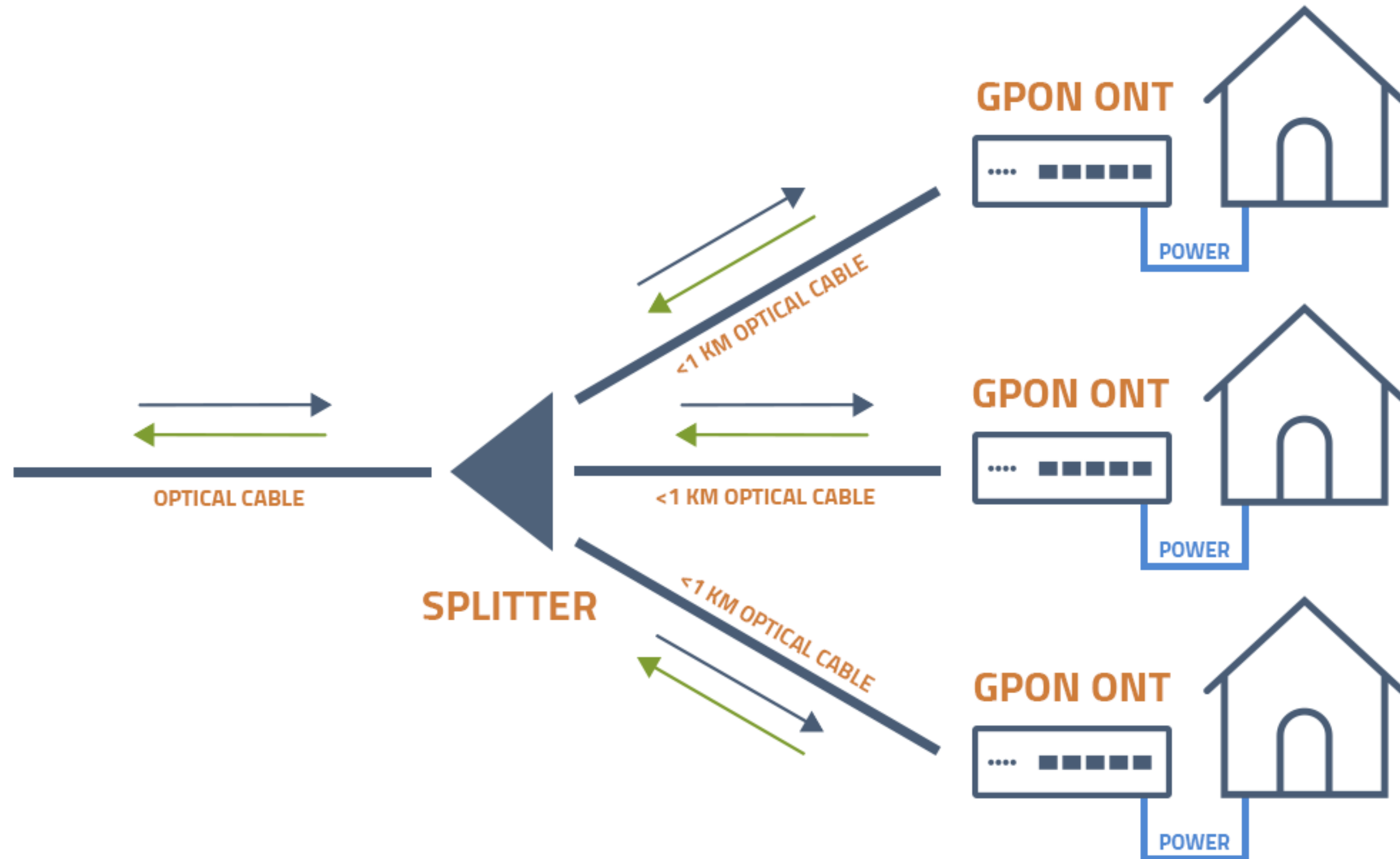
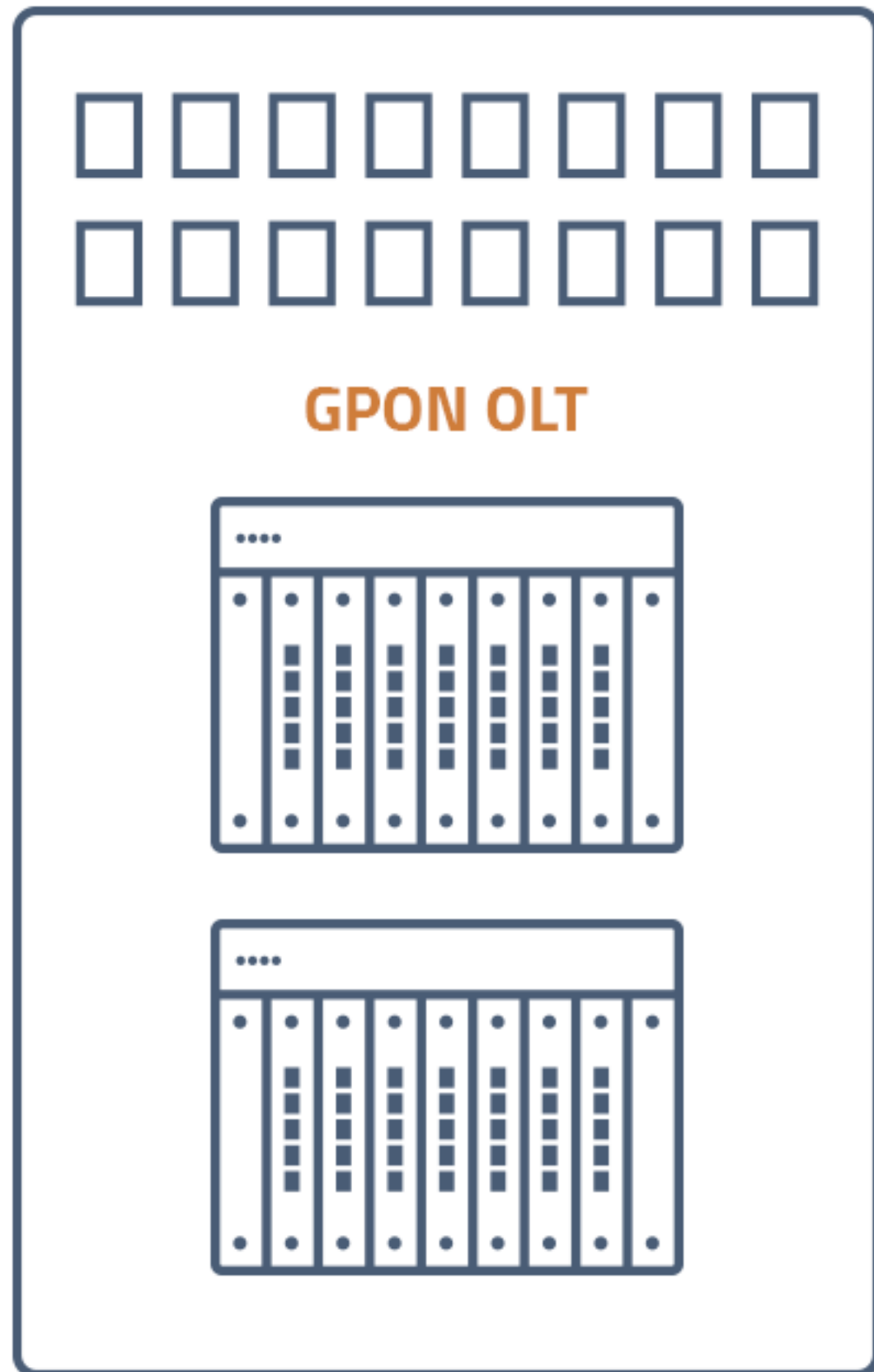


UPCOMING PRODUCTS

The background features a blurred image of network equipment. On the left, a black HAPS (Home Access Point System) device is visible, showing its ports and branding. In the center, a white network switch with multiple ports is partially visible. On the right, a white network router or access point is shown, also with its ports visible. The entire scene is overlaid with a semi-transparent purple-to-pink gradient.

GPEN

CENTRAL OFFICE



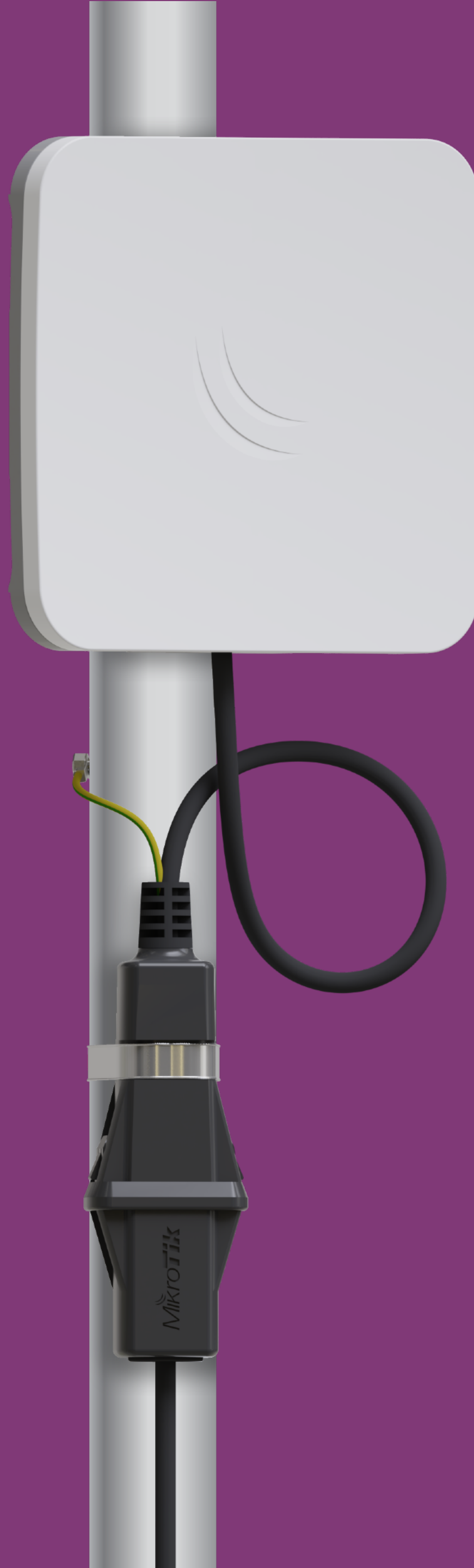
The background of the image shows a blurred network equipment rack. On the left, a black device with a vertical array of ports is visible. In the center, a white vertical device with a series of indicator lights is present. On the right, a white horizontal device with multiple ports is visible. The entire scene is overlaid with a semi-transparent purple-to-pink gradient.

GIGABIT PASSIVE ETHERNET NETWORK

GPER



- Gigabit passive Ethernet repeater
- Ethernet extender with PoE passthrough
- 24-57 V supported
- ~2.5 V loss per 100 meters, allows up to 1.5 km long cable with PoE



GESP

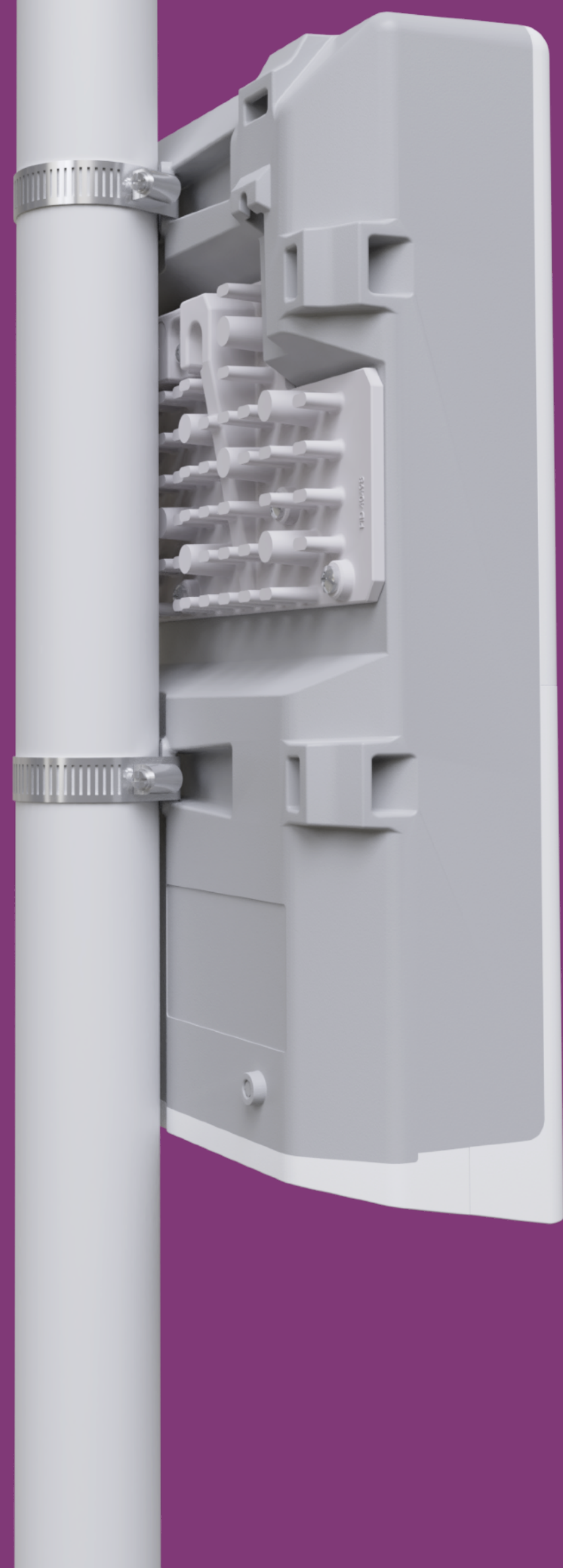
- Gigabit Ethernet surge protector
- Up to 30 kV
- Tower, server room or both



GPEN

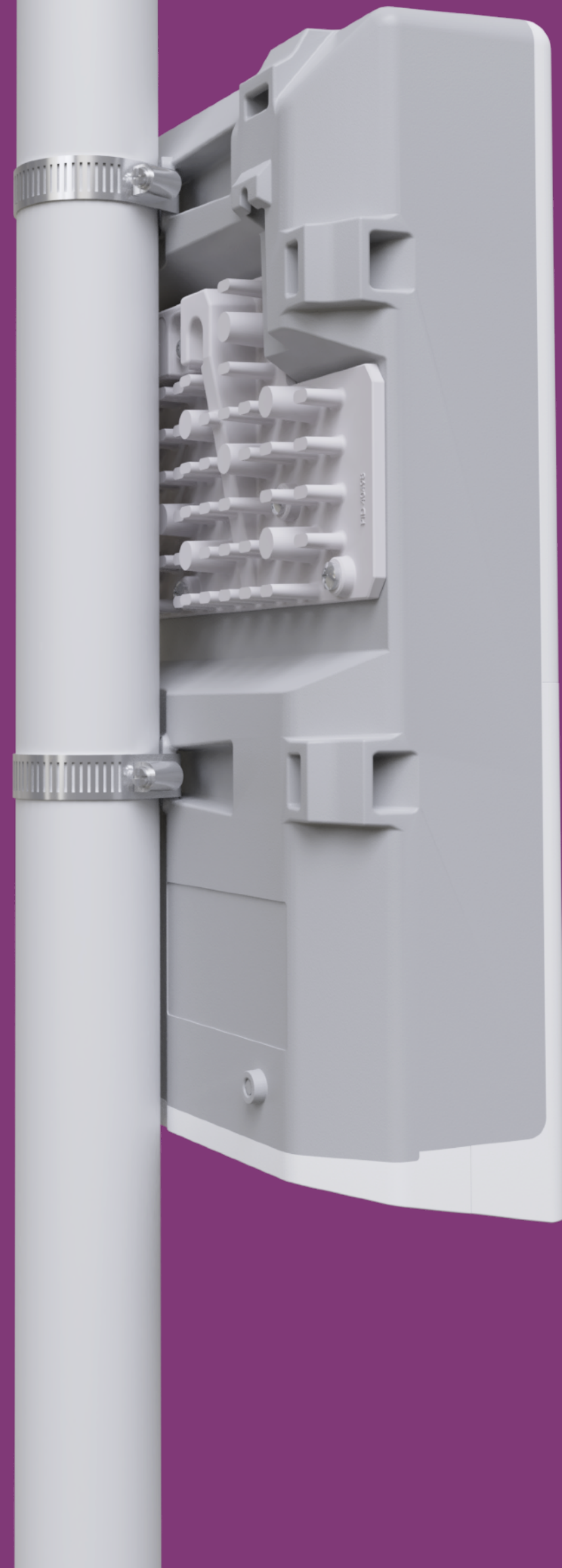
- Gigabit passive Ethernet network
- GPEN11 - PoE injector, can be mounted securely
- GPEN21 - smart injector, also adds SFP for fiber to copper functionality

CRS318-16Fi-2S



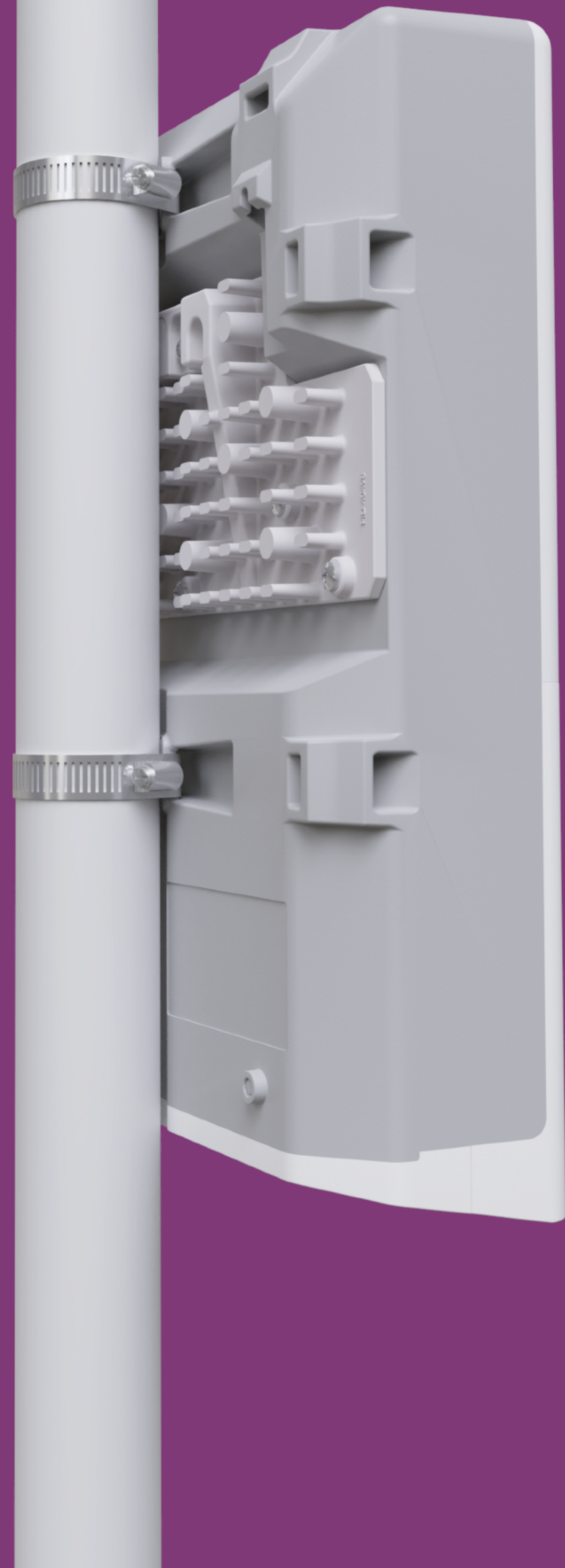
- 16 Ethernet ports and 2xSFP uplinks
- Reverse PoE (PoE in) on 15x ports
- Very affordable pricing
- PoE out on single port

CRS318-16P-2S+

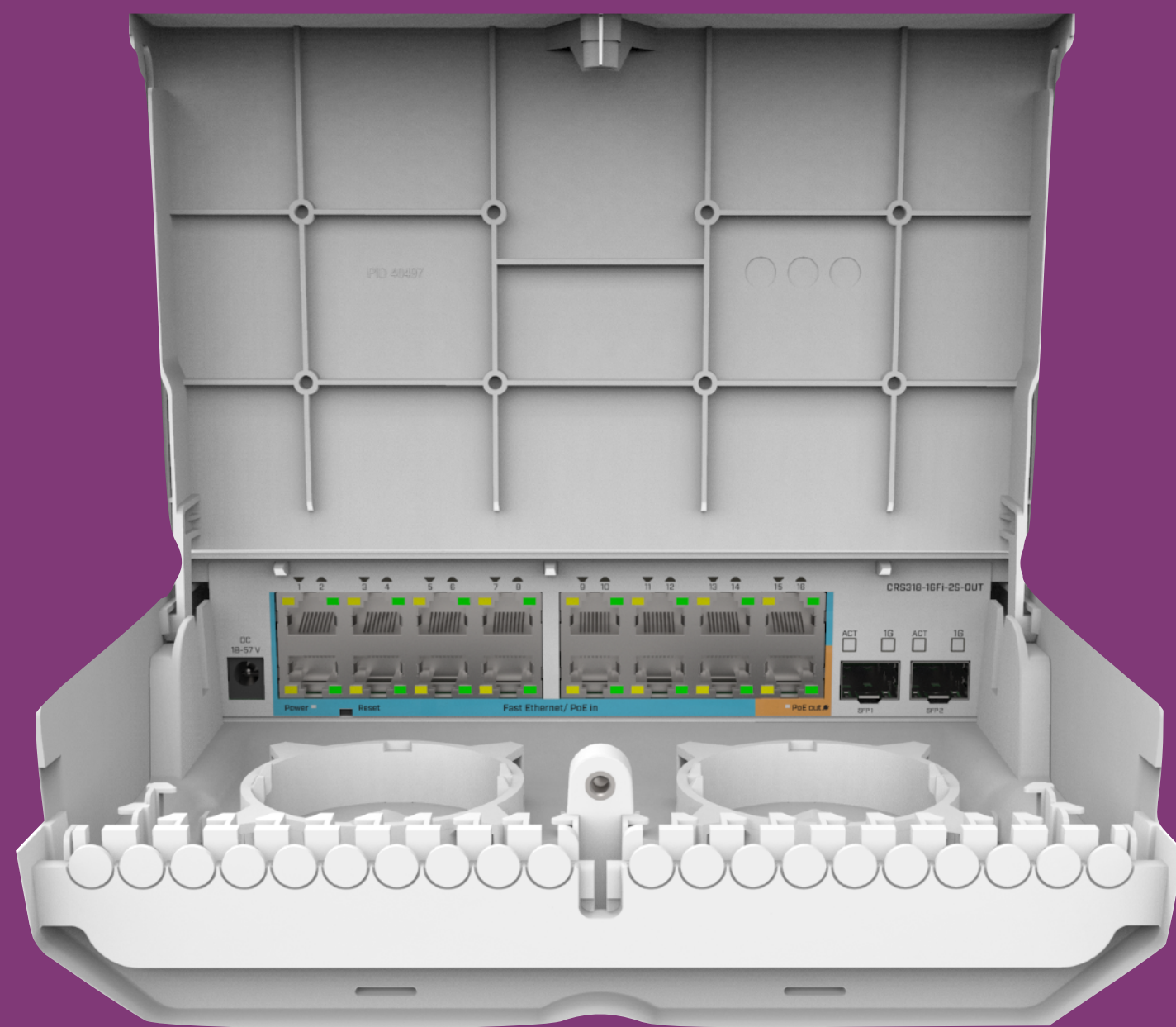


- 16 Gigabit Ethernet ports
- 2x SFP+ uplinks

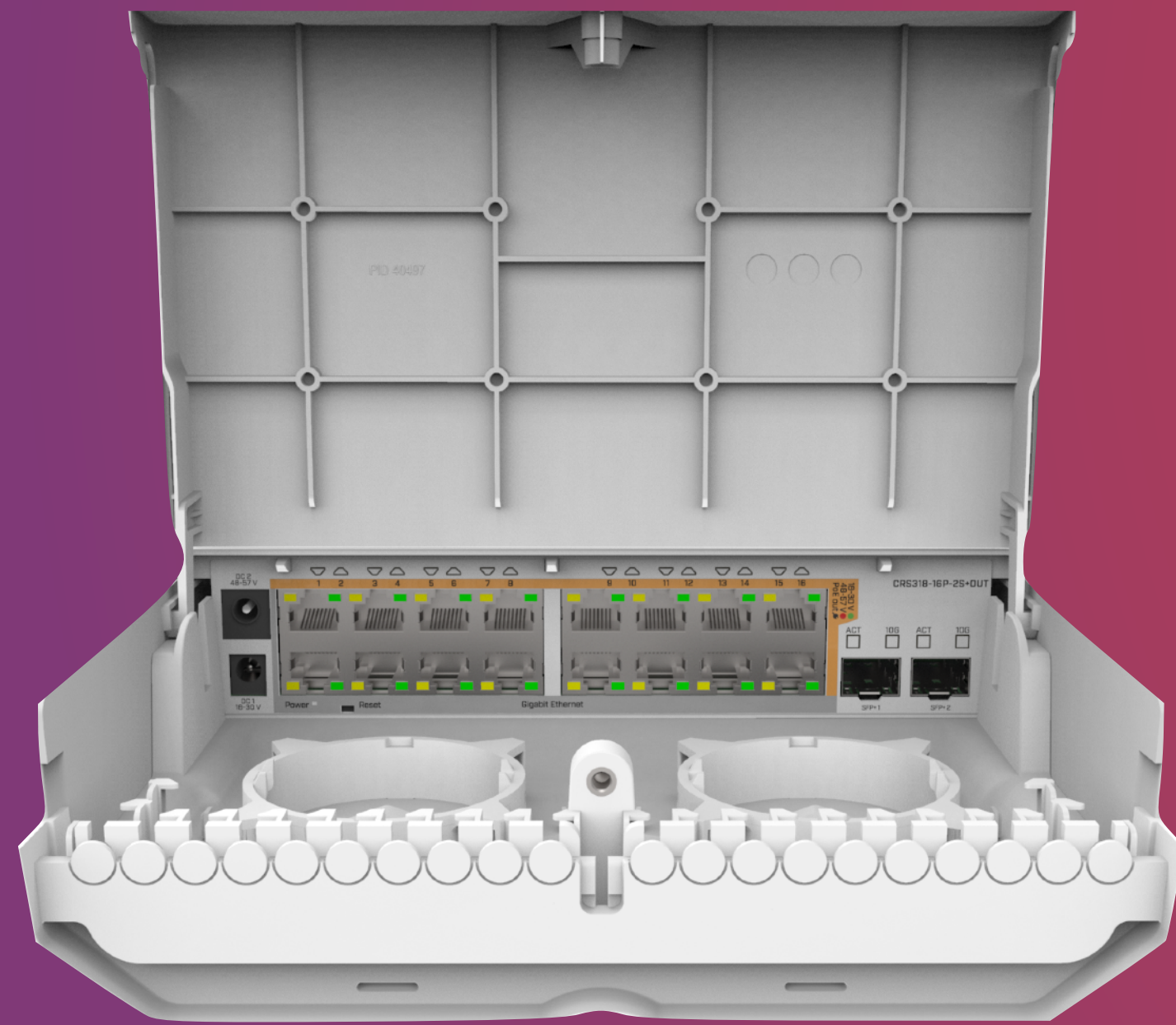
CSS610-8P-2S+



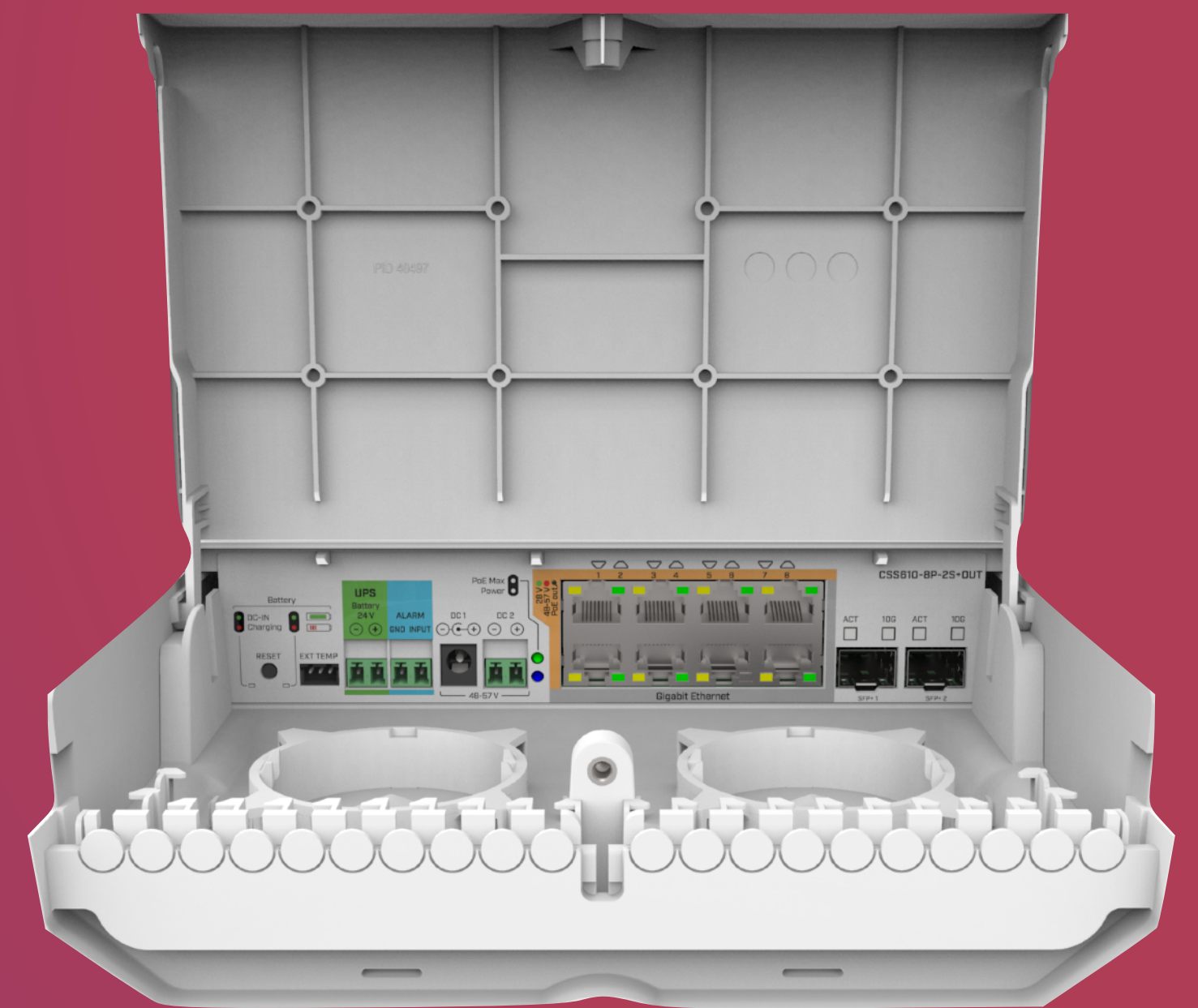
- SwOS only
- 8 Ethernet ports with PoE out and 2x SFP+ uplinks
- Very affordable pricing
- Will have built in UPS battery support



CRS318-16Fi-2S-OUT



CRS318-16P-2S+OUT

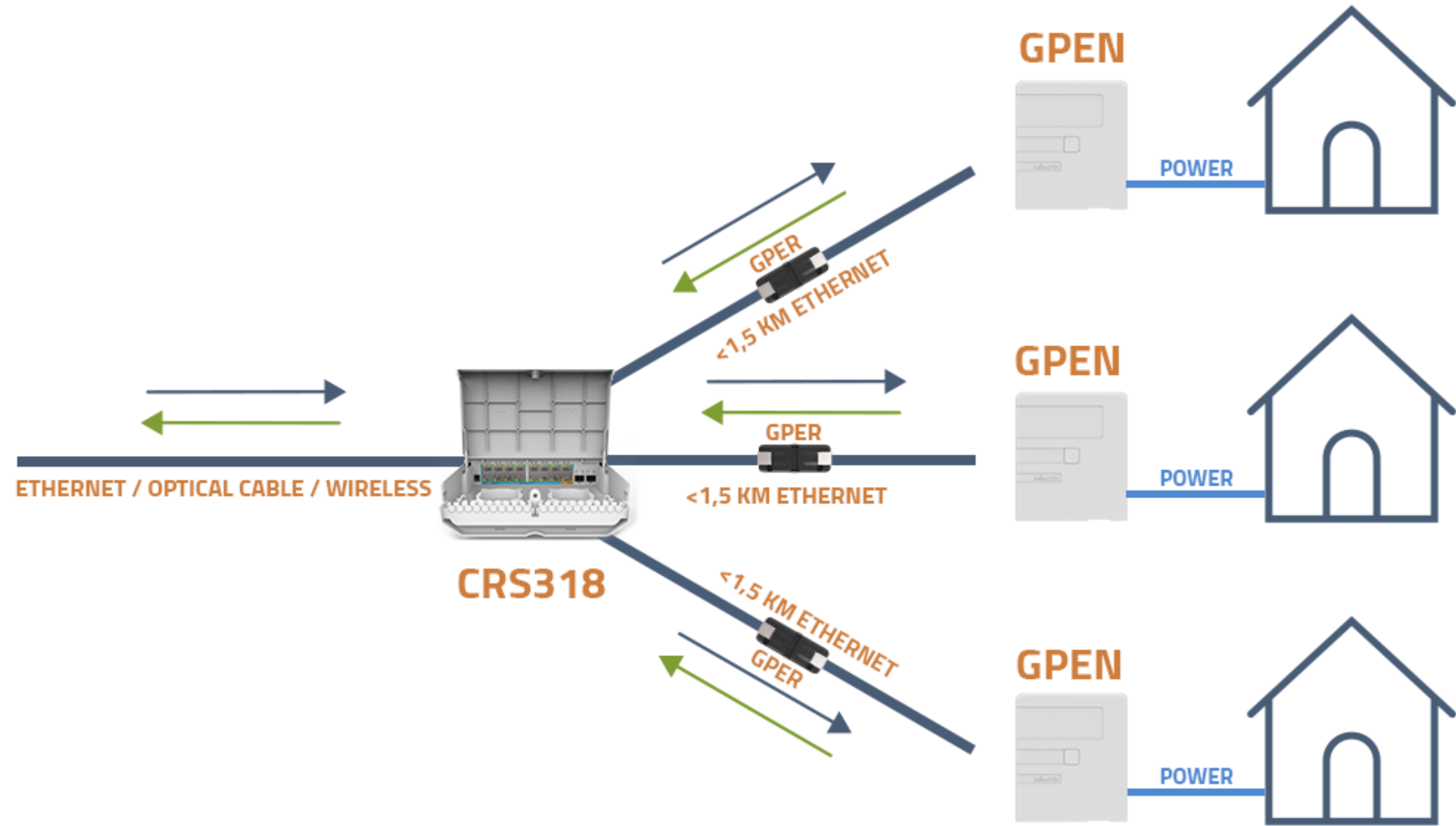
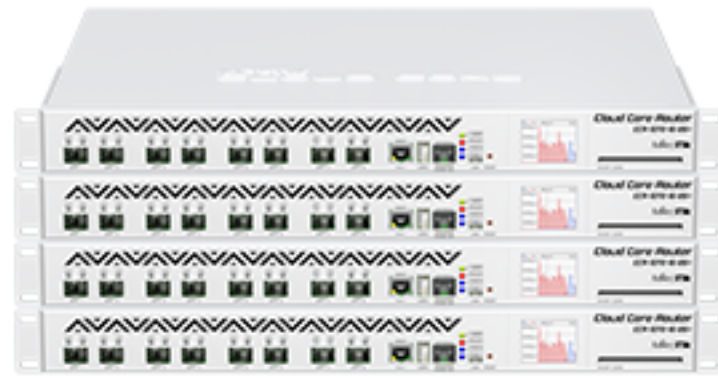


CSS610-8P-2S+OUT

CENTRAL OFFICE

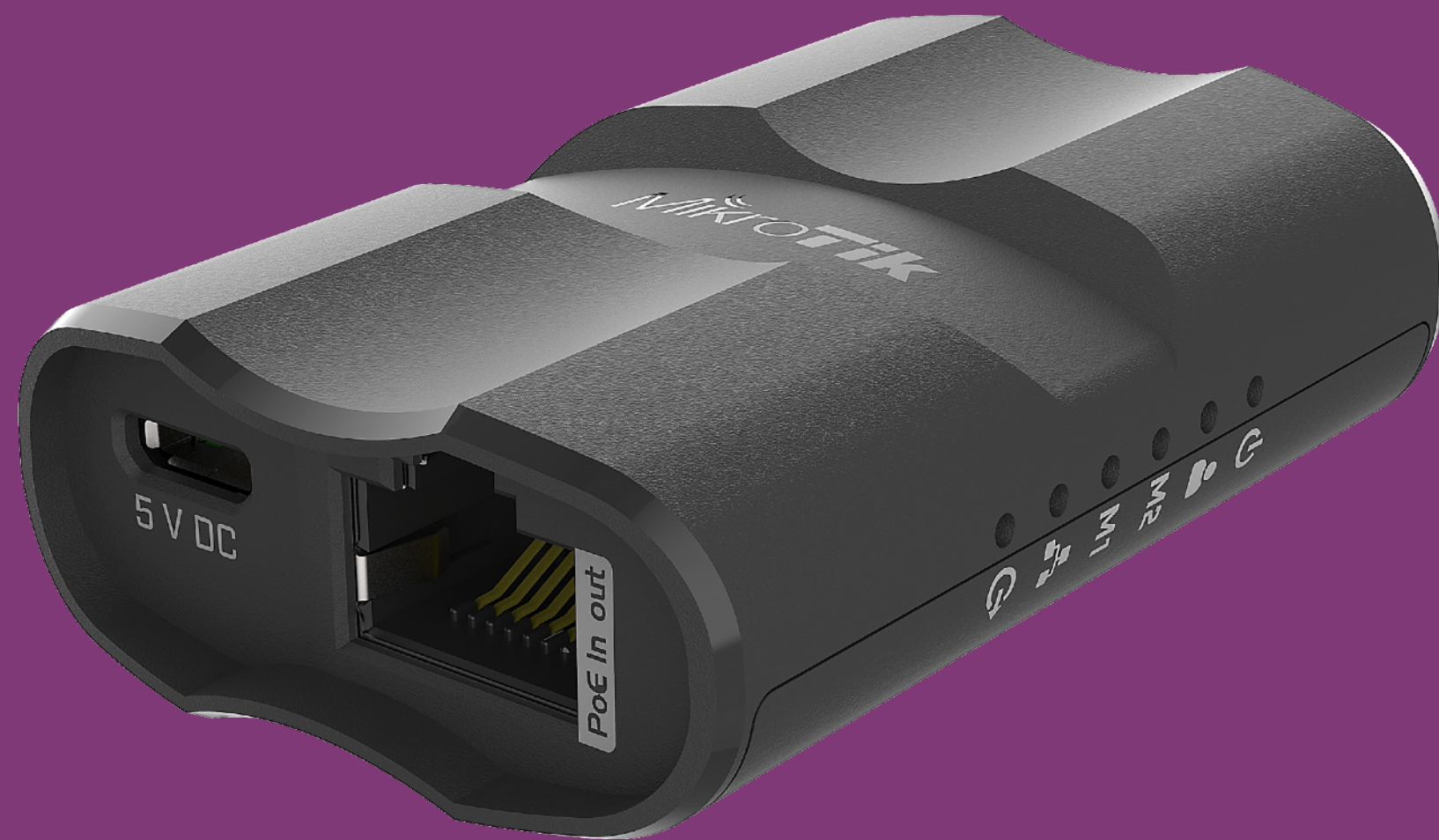


REGULAR NETWORK



MQS

- Mobile quick setup
- Administrators friend
- Manage Ethernet only devices from your phone over WiFi
- Can be powered from power bank
- Itself can power an SXT with PoE





LoRa

- wAP 2 GHz AP with LoRa gateway
- UDP packet forwarder to any public or private network server
- Integrated 2.5 dBi antenna with external antenna support
- LoRa mPCIe Gateway module available

mUPS pro



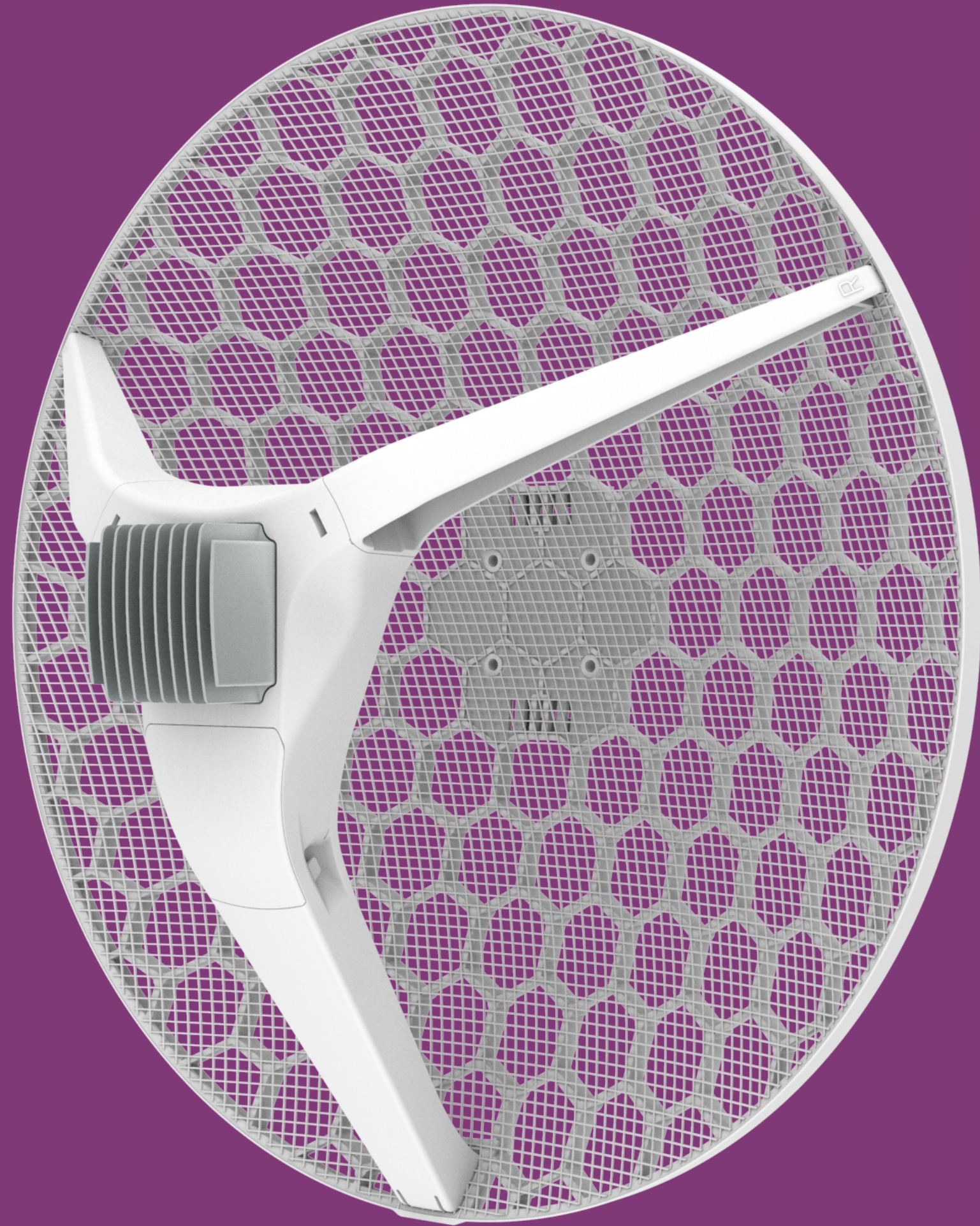
- Same form factor as mUPS
- 24 V/48 V battery support
- 24 V/48 V PoE out support
- Managed through web interface

LtAP



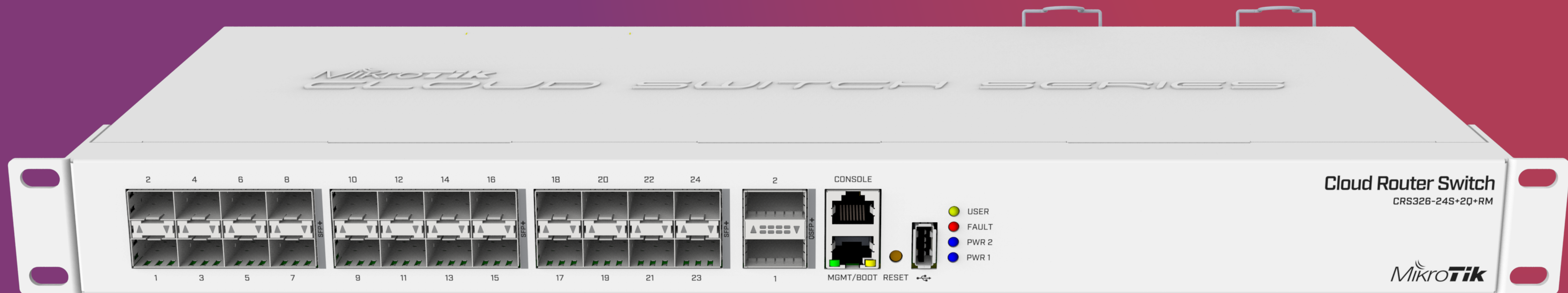
- Still coming, soon, promise!
- Three SIM slots, two miniPCle
- GPS (GNSS), built-in WiFi, multiple power sources, USB, console, SMA connectors

LHG XL HP

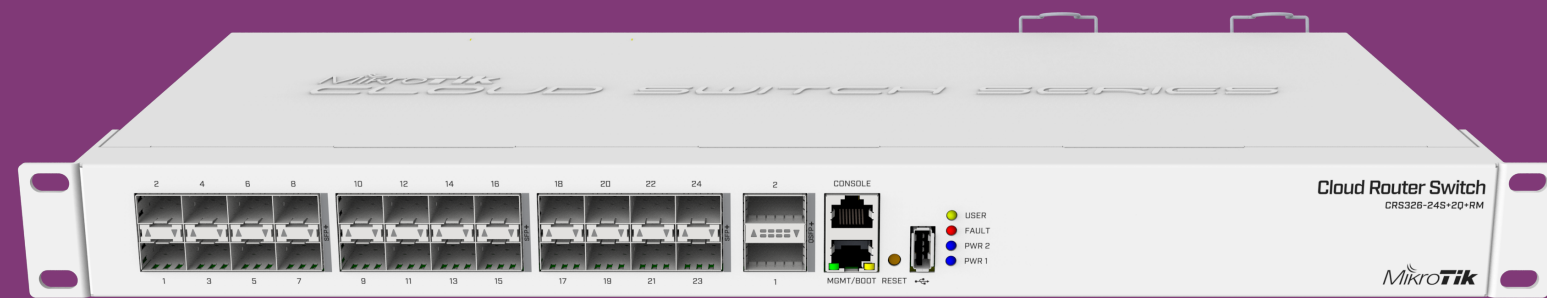


- Simultaneous dual band router
- Gigabit Ethernet and SFP
- Use for failover or higher throughput
- High gain and output power

CRS326-24S+2Q+

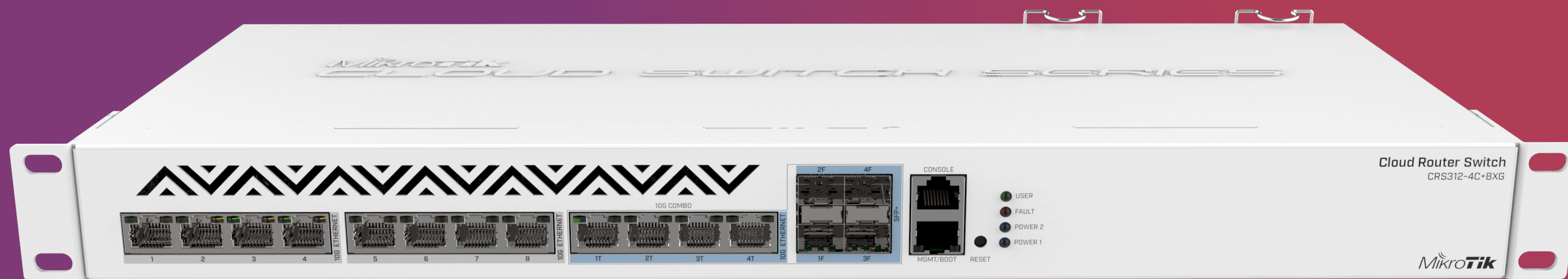


CRS326-24S+2Q+

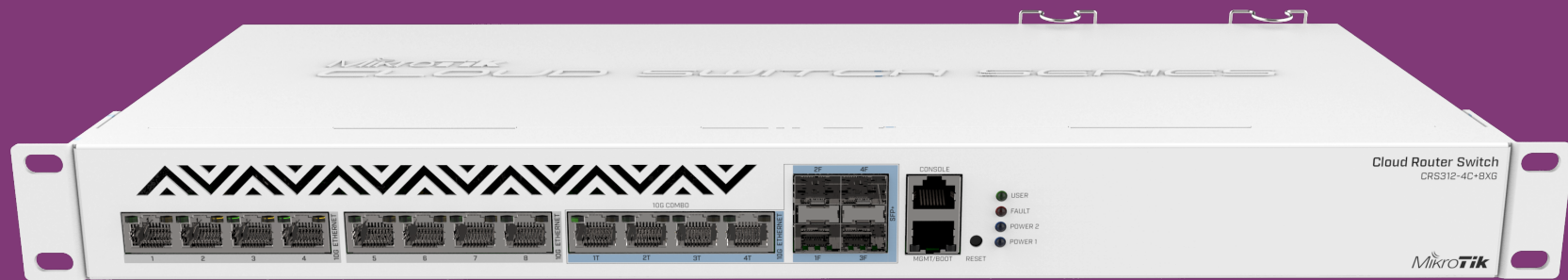


- 24x SFP+ (10G ports)
- 2x QSFP+ (40G ports)
- Previously announced as CRS332-32S+
- Will be available in Q3 2019

CRS312-4C+8XG

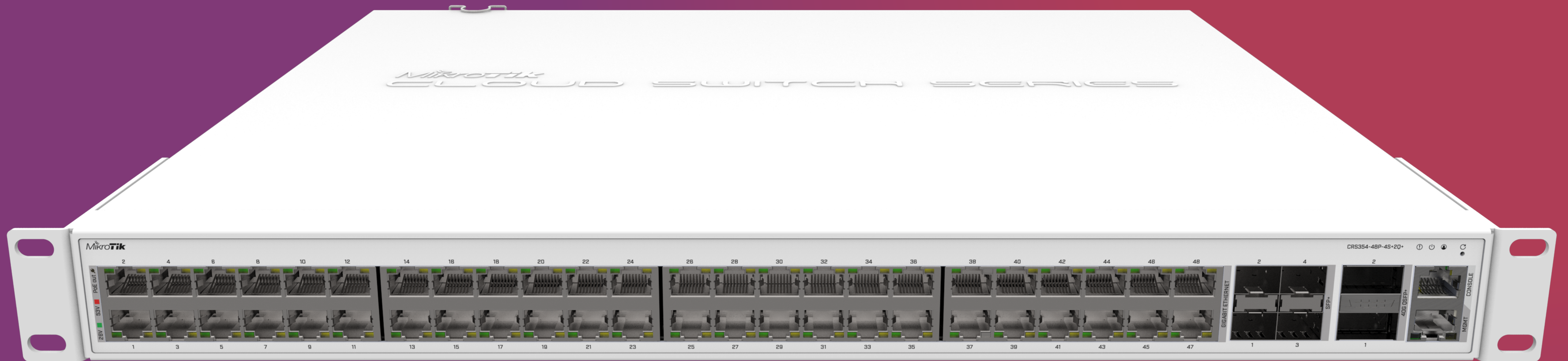


CRS312-4C+8XG

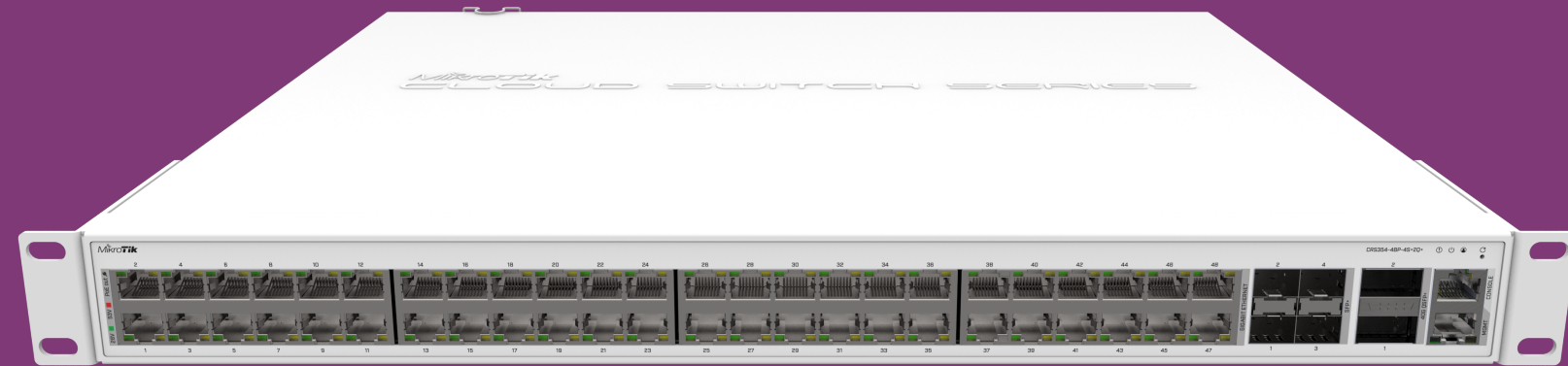


- 8x 10G Ethernet ports
- 4x 10G Ethernet / 10G SFP+ combo ports
- Console and management ports
- Dual PSU
- Will be available in Q2 2019

CRS354-48G-4S+2Q+



CRS354-48G-4S+2Q+

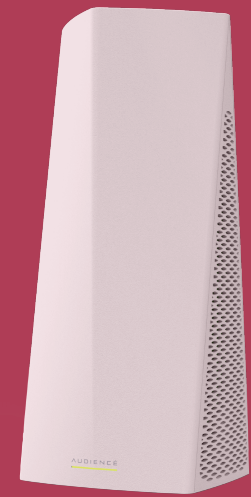


- 48x Gigabit ports
- 4x SFP+ ports
- 2x QSFP+ ports
- 48x PoE out port version
- Expected Q4 2019



AUDIENCÉ

AUDIENCÉ



Audience

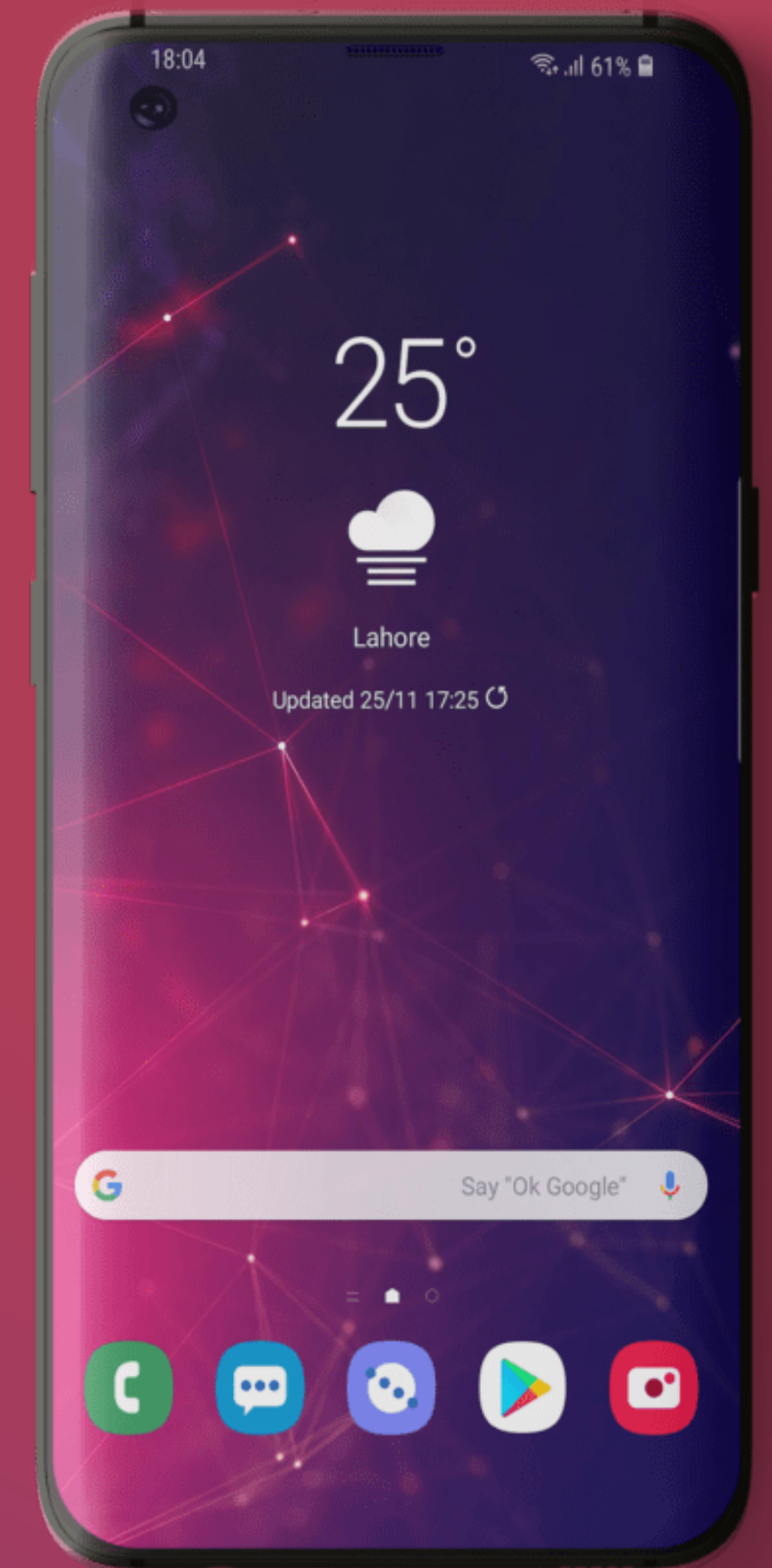
- Tri-band 802.11ac home AP with mesh function
- Secondary 5 GHz interface pairs with other units
- Two Ethernet ports
- LTE model with SIM slot and CAT6 modem



MikroTik app for iOS / Android



Scan me



The image features a stylized world map in shades of red and purple, overlaid with a grid of latitude and longitude lines. In the center of the map, there is a small silhouette of a person riding a bicycle. The Microtik logo is prominently displayed in the center, consisting of a white crescent moon above the word "MIKROTIK" in a bold, white, sans-serif font. The letters "MIKRO" are in a regular weight, while "TIK" is in a significantly heavier, bolder weight.

MIKROTIK